

**VEGF1 Antibody (N-term)**  
**Purified Rabbit Polyclonal Antibody (Pab)**  
**Catalog # AP6290a****Specification**

---

**VEGF1 Antibody (N-term) - Product Information**

Application	WB,E
Primary Accession	<a href="#">P15692</a>
Reactivity	Human
Host	Rabbit
Clonality	Polyclonal
Isotype	Rabbit IgG
Calculated MW	43597
Antigen Region	66-95

**VEGF1 Antibody (N-term) - Additional Information****Gene ID** 7422**Other Names**

Vascular endothelial growth factor A, VEGF-A, Vascular permeability factor, VPF, VEGFA, VEGF

**Target/Specificity**

This VEGF1 antibody is generated from rabbits immunized with a KLH conjugated synthetic peptide between 66-95 amino acids from the N-terminal region of human VEGF1.

**Dilution**

WB~~1:1000

E~~Use at an assay dependent concentration.

**Format**

Purified polyclonal antibody supplied in PBS with 0.09% (W/V) sodium azide. This antibody is prepared by Saturated Ammonium Sulfate (SAS) precipitation followed by dialysis against PBS.

**Storage**

Maintain refrigerated at 2-8°C for up to 2 weeks. For long term storage store at -20°C in small aliquots to prevent freeze-thaw cycles.

**Precautions**

VEGF1 Antibody (N-term) is for research use only and not for use in diagnostic or therapeutic procedures.

**VEGF1 Antibody (N-term) - Protein Information****Name** VEGFA**Synonyms** VEGF

**Function** [N-VEGF]: Participates in the induction of key genes involved in the response to hypoxia and in the induction of angiogenesis such as HIF1A (PubMed:[35455969](#)). Involved in protecting cells from hypoxia- mediated cell death (By similarity).

#### **Cellular Location**

[N-VEGF]: Cytoplasm. Nucleus. Note=Cytoplasmic in normoxic conditions and localizes to the nucleus under hypoxic conditions [Isoform L-VEGF189]: Endoplasmic reticulum. Golgi apparatus. Secreted, extracellular space, extracellular matrix [Isoform VEGF165]: Secreted

#### **Tissue Location**

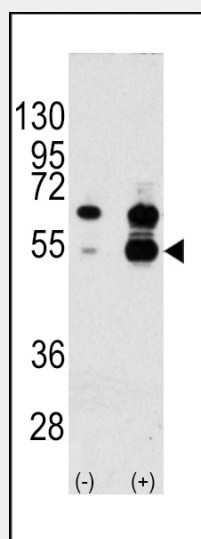
Higher expression in pituitary tumors than the pituitary gland. [Isoform VEGF165]: Widely expressed. [Isoform VEGF206]: Not widely expressed.

### **VEGF1 Antibody (N-term) - Protocols**

Provided below are standard protocols that you may find useful for product applications.

- [Western Blot](#)
- [Blocking Peptides](#)
- [Dot Blot](#)
- [Immunohistochemistry](#)
- [Immunofluorescence](#)
- [Immunoprecipitation](#)
- [Flow Cytometry](#)
- [Cell Culture](#)

### **VEGF1 Antibody (N-term) - Images**



Western blot analysis of VEGF1 Antibody (N-term) polyclonal antibody (Cat.#AP6290a) (arrow). 293 cell lysates (2 ug/lane) either nontransfected (Lane 1) or transiently transfected with the VEGF1 gene (Lane 2) (Origene Technologies). Molecular weight of monomeric VEGF1 is 27042 Da; higher observed molecular weight band is consistent with common form of disulfide linked homodimer.

### **VEGF1 Antibody (N-term) - Background**

VEGF1 is a member of the PDGF/VEGF growth factor family and is often found as a disulfide

linked homodimer. This protein is a glycosylated mitogen that specifically acts on endothelial cells and has various effects, including mediating increased vascular permeability, inducing angiogenesis, vasculogenesis and endothelial cell growth, promoting cell migration, and inhibiting apoptosis. Elevated levels of this protein are linked to POEMS syndrome, also known as Crow-Fukase syndrome. Mutations in VEGF1 have been associated with proliferative and nonproliferative diabetic retinopathy.