

ABAD Antibody (C-term)
Purified Rabbit Polyclonal Antibody (Pab)
Catalog # AP6307b**Specification**

ABAD Antibody (C-term) - Product Information

Application	WB, IHC-P,E
Primary Accession	Q6IBS9
Other Accession	O70351 , O08756 , Q99714 , O02691
Reactivity	Human, Mouse
Predicted	Bovine, Rat
Host	Rabbit
Clonality	Polyclonal
Isotype	Rabbit IgG
Antigen Region	199-235

ABAD Antibody (C-term) - Additional Information**Other Names**

hydroxyacyl-Coenzyme A dehydrogenase, type II isoform 1; 3-hydroxyacyl-CoA dehydrogenase type II; Type II HADH; 3-hydroxy-2-methylbutyryl-CoA dehydrogenase; Endoplasmic reticulum-associated amyloid beta-peptide binding protein; Short-chain type dehydrogenase/reductase XH98G2 ; ERAB, HSD17B10, SCHAD; HADH2 protein

Target/Specificity

This ABAD antibody is generated from rabbits immunized with a KLH conjugated synthetic peptide between 199-235 amino acids from the C-terminal region of human ABAD.

Dilution

WB~~1:1000
IHC-P~~1:50~100
E~~Use at an assay dependent concentration.

Format

Purified polyclonal antibody supplied in PBS with 0.09% (W/V) sodium azide. This antibody is purified through a protein A column, followed by peptide affinity purification.

Storage

Maintain refrigerated at 2-8°C for up to 2 weeks. For long term storage store at -20°C in small aliquots to prevent freeze-thaw cycles.

Precautions

ABAD Antibody (C-term) is for research use only and not for use in diagnostic or therapeutic procedures.

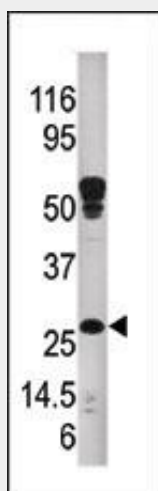
ABAD Antibody (C-term) - Protein Information

ABAD Antibody (C-term) - Protocols

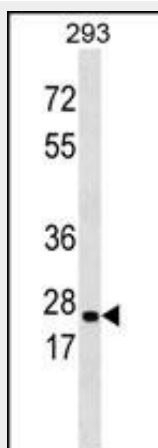
Provided below are standard protocols that you may find useful for product applications.

- [Western Blot](#)
- [Blocking Peptides](#)
- [Dot Blot](#)
- [Immunohistochemistry](#)
- [Immunofluorescence](#)
- [Immunoprecipitation](#)
- [Flow Cytometry](#)
- [Cell Culture](#)

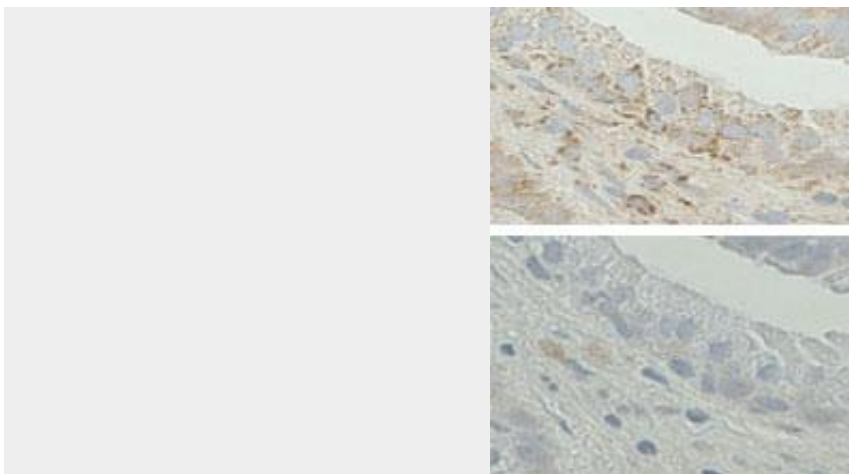
ABAD Antibody (C-term) - Images



Western blot analysis of anti-ABAD Pab (Cat. #AP6307b) in mouse kidney tissue lysate. ABAD (arrow) was detected using the purified Pab.



ABAD Antibody (C214) (Cat. #AP6307b) western blot analysis in 293 cell line lysates (35ug/lane). This demonstrates the ABAD antibody detected the ABAD protein (arrow).



Immunohistochemistry on Formalin-fixed and paraffin-embedded human prostate tissue. (Top)Coloration with the Anti-ABAD antibody at a 1:20 concentration. (Bottom)Antibody adsorbed to the antigen (peptide), negative control.Disappearance of cytoplasmic staining indicating the antibody is specific. Data and protocol courtesy of Marie-Hélène Levesque, Centre de Recherche du CHUL, Canada.

ABAD Antibody (C-term) - Background

Amyloid b-peptide-binding alcohol dehydrogenase (ABAD) is a member of the family of short chain dehydrogenase/reductases; unique among this family, it binds amyloid b-peptide and exhibits enzymatic activity toward a wide variety of substrates including linear alcohols. In an amyloid beta-abundant environment, ABAD appears to trigger cell stress induced by the amyloid peptide.

ABAD Antibody (C-term) - References

FASEB J. 19 (6), 597-598 (2005) J. Mol. Biol. 342 (3), 943-952 (2004) Science 304 (5669), 448-452 (2004) FEBS Lett. 451 (3), 238-242 (1999) J. Biol. Chem. 274 (21), 15014-15019 (1999)