

**Cleaved-MMP-12 (G106) Polyclonal Antibody**  
**Catalog # AP63135****Specification**

---

**Cleaved-MMP-12 (G106) Polyclonal Antibody - Product Information**

Application	WB
Primary Accession	<a href="#">P39900</a>
Reactivity	Human
Host	Rabbit
Clonality	Polyclonal

**Cleaved-MMP-12 (G106) Polyclonal Antibody - Additional Information****Gene ID** 4321**Other Names**

MMP12; HME; Macrophage metalloelastase; MME; Macrophage elastase; ME; hME; Matrix metalloproteinase-12; MMP-12

**Dilution**

WB~~Western Blot: 1/500 - 1/2000. ELISA: 1/20000. Not yet tested in other applications.

**Format**

Liquid in PBS containing 50% glycerol, 0.5% BSA and 0.09% (W/V) sodium azide.

**Storage Conditions**

-20°C

**Cleaved-MMP-12 (G106) Polyclonal Antibody - Protein Information****Name** MMP12**Synonyms** HME**Function**

May be involved in tissue injury and remodeling. Has significant elastolytic activity. Can accept large and small amino acids at the P1' site, but has a preference for leucine. Aromatic or hydrophobic residues are preferred at the P1 site, with small hydrophobic residues (preferably alanine) occupying P3.

**Cellular Location**

Secreted, extracellular space, extracellular matrix

**Tissue Location**

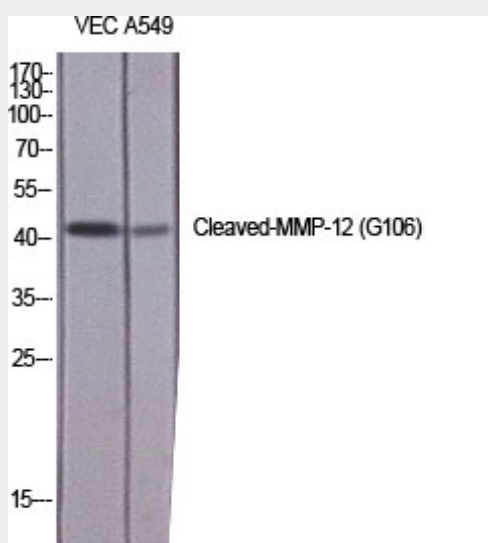
Found in alveolar macrophages but not in peripheral blood monocytes

## Cleaved-MMP-12 (G106) Polyclonal Antibody - Protocols

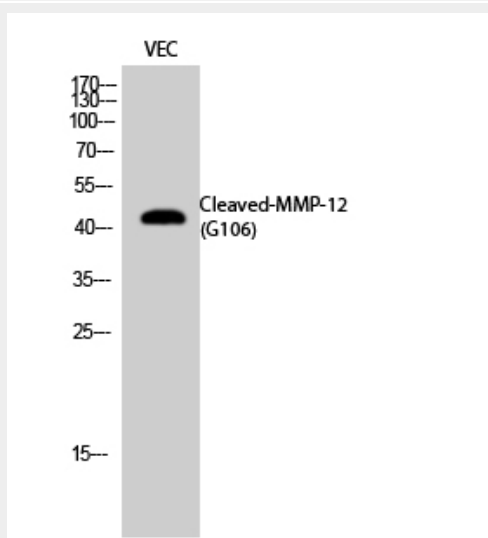
Provided below are standard protocols that you may find useful for product applications.

- [Western Blot](#)
- [Blocking Peptides](#)
- [Dot Blot](#)
- [Immunohistochemistry](#)
- [Immunofluorescence](#)
- [Immunoprecipitation](#)
- [Flow Cytometry](#)
- [Cell Culture](#)

## Cleaved-MMP-12 (G106) Polyclonal Antibody - Images



Western Blot analysis of various cells using Cleaved-MMP-12 (G106) Polyclonal Antibody diluted at 1:1000



Western Blot analysis of VEC cells using Cleaved-MMP-12 (G106) Polyclonal Antibody diluted at 1:1000

## Cleaved-MMP-12 (G106) Polyclonal Antibody - Background

May be involved in tissue injury and remodeling. Has significant elastolytic activity. Can accept large and small amino acids at the P1' site, but has a preference for leucine. Aromatic or hydrophobic residues are preferred at the P1 site, with small hydrophobic residues (preferably alanine) occupying P3.