

Cleaved-MMP-17 (Q129) Polyclonal Antibody
Catalog # AP63138**Specification**

Cleaved-MMP-17 (Q129) Polyclonal Antibody - Product Information

Application	WB
Primary Accession	Q9ULZ9
Reactivity	Human
Host	Rabbit
Clonality	Polyclonal

Cleaved-MMP-17 (Q129) Polyclonal Antibody - Additional Information**Gene ID** 4326**Other Names**

MMP17; MT4MMP; Matrix metalloproteinase-17; MMP-17; Membrane-type matrix metalloproteinase 4; MT-MMP 4; MTMMP4; Membrane-type-4 matrix metalloproteinase; MT4-MMP; MT4MMP

Dilution

WB~~Western Blot: 1/500 - 1/2000. ELISA: 1/10000. Not yet tested in other applications.

Format

Liquid in PBS containing 50% glycerol, 0.5% BSA and 0.09% (W/V) sodium azide.

Storage Conditions

-20°C

Cleaved-MMP-17 (Q129) Polyclonal Antibody - Protein Information**Name** MMP17**Synonyms** MT4MMP**Function**

Endopeptidase that degrades various components of the extracellular matrix, such as fibrin. May be involved in the activation of membrane-bound precursors of growth factors or inflammatory mediators, such as tumor necrosis factor-alpha. May also be involved in tumoral process. Cleaves pro-TNF-alpha at the '74-Ala-|-Gln-75' site. Not obvious if able to proteolytically activate progelatinase A. Does not hydrolyze collagen types I, II, III, IV and V, gelatin, fibronectin, laminin, decorin nor alpha1-antitrypsin.

Cellular Location

[Isoform Long]: Cell membrane; Lipid-anchor, GPI- anchor; Extracellular side. Secreted, extracellular space, extracellular matrix

Tissue Location

Expressed in brain, leukocytes, colon, ovary testis and breast cancer. Expressed also in many

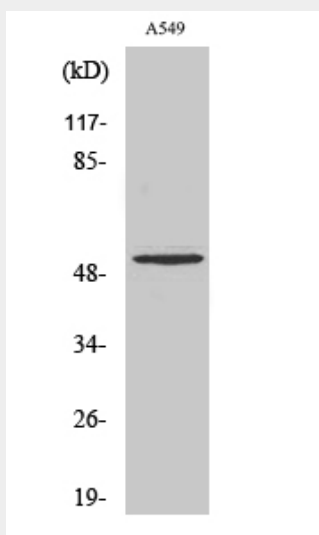
transformed and non- transformed cell types

Cleaved-MMP-17 (Q129) Polyclonal Antibody - Protocols

Provided below are standard protocols that you may find useful for product applications.

- [Western Blot](#)
- [Blocking Peptides](#)
- [Dot Blot](#)
- [Immunohistochemistry](#)
- [Immunofluorescence](#)
- [Immunoprecipitation](#)
- [Flow Cytometry](#)
- [Cell Culture](#)

Cleaved-MMP-17 (Q129) Polyclonal Antibody - Images



Cleaved-MMP-17 (Q129) Polyclonal Antibody - Background

Endopeptidase that degrades various components of the extracellular matrix, such as fibrin. May be involved in the activation of membrane-bound precursors of growth factors or inflammatory mediators, such as tumor necrosis factor-alpha. May also be involved in tumoral process. Cleaves pro-TNF-alpha at the '74-Ala-I-Gln-75' site. Not obvious if able to proteolytically activate progelatinase A. Does not hydrolyze collagen types I, II, III, IV and V, gelatin, fibronectin, laminin, decorin nor alpha1- antitrypsin.