

**Cleaved-MMP-23 (Y79) Polyclonal Antibody**  
**Catalog # AP63139****Specification**

---

**Cleaved-MMP-23 (Y79) Polyclonal Antibody - Product Information**

Application	WB
Primary Accession	<a href="#">O75900</a>
Reactivity	Human, Mouse, Rat
Host	Rabbit
Clonality	Polyclonal

**Cleaved-MMP-23 (Y79) Polyclonal Antibody - Additional Information****Gene ID** 8510**Other Names**

MMP23A; MMP21; MMP23B; MMP21; MMP22; Matrix metalloproteinase-23; MMP-23; Femalysin; MIFR-1; Matrix metalloproteinase-21; MMP-21; Matrix metalloproteinase-22; MMP-22

**Dilution**

WB~~Western Blot: 1/500 - 1/2000. ELISA: 1/20000. Not yet tested in other applications.

**Format**

Liquid in PBS containing 50% glycerol, 0.5% BSA and 0.09% (W/V) sodium azide.

**Storage Conditions**

-20°C

**Cleaved-MMP-23 (Y79) Polyclonal Antibody - Protein Information****Name** MMP23B**Synonyms** MMP21, MMP22**Function**

Protease. May regulate the surface expression of some potassium channels by retaining them in the endoplasmic reticulum (By similarity).

**Cellular Location**

Endoplasmic reticulum membrane; Single-pass type II membrane protein. Membrane; Single-pass type II membrane protein. Note=A secreted form produced by proteolytic cleavage may also exist.

**Tissue Location**

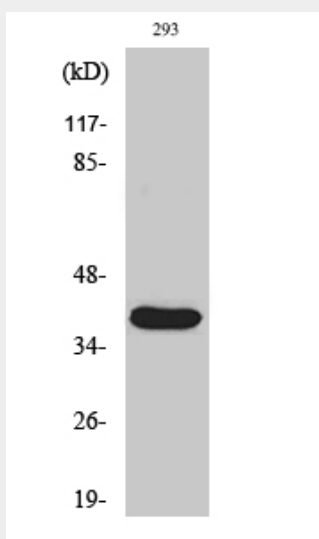
Predominantly expressed in ovary, testis and prostate.

**Cleaved-MMP-23 (Y79) Polyclonal Antibody - Protocols**

Provided below are standard protocols that you may find useful for product applications.

- [Western Blot](#)
- [Blocking Peptides](#)
- [Dot Blot](#)
- [Immunohistochemistry](#)
- [Immunofluorescence](#)
- [Immunoprecipitation](#)
- [Flow Cytometry](#)
- [Cell Culture](#)

#### **Cleaved-MMP-23 (Y79) Polyclonal Antibody - Images**



Western Blot analysis of various cells using Cleaved-MMP-23 (Y79) Polyclonal Antibody

#### **Cleaved-MMP-23 (Y79) Polyclonal Antibody - Background**

Protease. May regulate the surface expression of some potassium channels by retaining them in the endoplasmic reticulum (By similarity).