

Cleaved-Notch 1 (V1754) Polyclonal Antibody
Catalog # AP63142**Specification**

Cleaved-Notch 1 (V1754) Polyclonal Antibody - Product Information

Application	WB, IHC-P, IF
Primary Accession	P46531
Reactivity	Human, Mouse, Rat
Host	Rabbit
Clonality	Polyclonal

Cleaved-Notch 1 (V1754) Polyclonal Antibody - Additional Information**Gene ID** 4851**Other Names**

NOTCH1; TAN1; Neurogenic locus notch homolog protein 1; Notch 1; hN1; Translocation-associated notch protein TAN-1

Dilution

WB~~WB 1:500-2000, IHC-p 1:50-300, IF 1:50-300

IHC-P~~N/A

IF~~WB 1:500-2000, IHC-p 1:50-300, IF 1:50-300

Format

Liquid in PBS containing 50% glycerol, 0.5% BSA and 0.09% (W/V) sodium azide.

Storage Conditions

-20°C

Cleaved-Notch 1 (V1754) Polyclonal Antibody - Protein Information**Name** NOTCH1**Synonyms** TAN1**Function**

Functions as a receptor for membrane-bound ligands Jagged-1 (JAG1), Jagged-2 (JAG2) and Delta-1 (DLL1) to regulate cell-fate determination. Upon ligand activation through the released notch intracellular domain (NICD) it forms a transcriptional activator complex with RBPJ/RBPSUH and activates genes of the enhancer of split locus. Affects the implementation of differentiation, proliferation and apoptotic programs. Involved in angiogenesis; negatively regulates endothelial cell proliferation and migration and angiogenic sprouting. Involved in the maturation of both CD4(+) and CD8(+) cells in the thymus. Important for follicular differentiation and possibly cell fate selection within the follicle. During cerebellar development, functions as a receptor for neuronal DNER and is involved in the differentiation of Bergmann glia. Represses neuronal and myogenic differentiation. May play an essential role in postimplantation development, probably in some aspect of cell specification and/or differentiation. May be involved in mesoderm

development, somite formation and neurogenesis. May enhance HIF1A function by sequestering HIF1AN away from HIF1A. Required for the THBS4 function in regulating protective astrocytosis from the subventricular zone (SVZ) niche after injury. Involved in determination of left/right symmetry by modulating the balance between motile and immotile (sensory) cilia at the left-right organiser (LRO).

Cellular Location

Cell membrane {ECO:0000250|UniProtKB:Q01705}; Single-pass type I membrane protein. Late endosome membrane; Single-pass type I membrane protein. Note=Non-activated receptor is targeted for lysosomal degradation via the endosomal pathway; transport from late endosomes to lysosomes requires deubiquitination by USP12.

Tissue Location

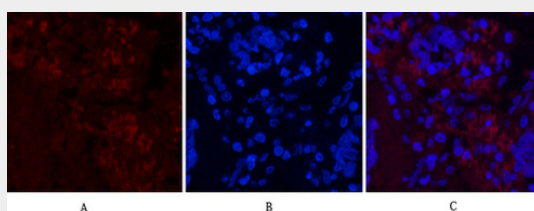
In fetal tissues most abundant in spleen, brain stem and lung. Also present in most adult tissues where it is found mainly in lymphoid tissues

Cleaved-Notch 1 (V1754) Polyclonal Antibody - Protocols

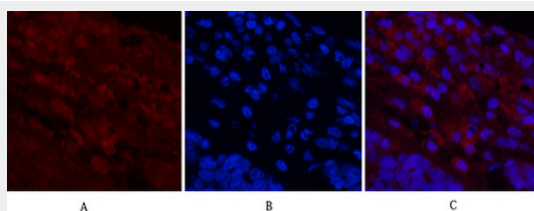
Provided below are standard protocols that you may find useful for product applications.

- [Western Blot](#)
- [Blocking Peptides](#)
- [Dot Blot](#)
- [Immunohistochemistry](#)
- [Immunofluorescence](#)
- [Immunoprecipitation](#)
- [Flow Cytometry](#)
- [Cell Culture](#)

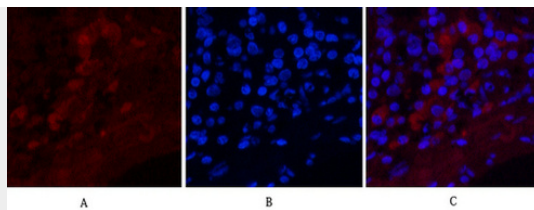
Cleaved-Notch 1 (V1754) Polyclonal Antibody - Images



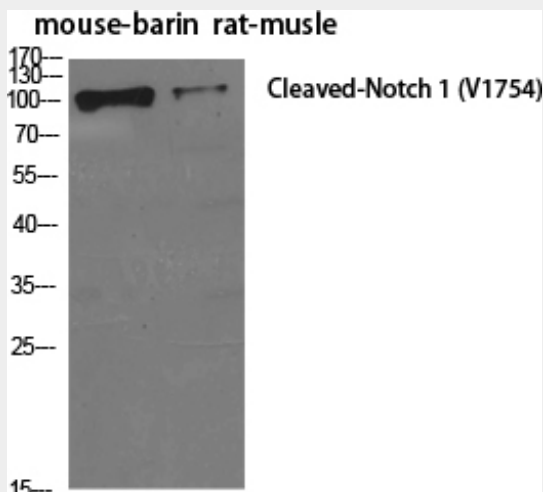
Immunofluorescence analysis of Human-lung-cancer tissue. 1, Cleaved-Notch 1 (V1754) Polyclonal Antibody (red) was diluted at 1:200 (4°C, overnight). 2, Cy3 labeled Secondary antibody was diluted at 1:300 (room temperature, 50 min). 3, Picture B: DAPI (blue) 10 min. Picture A: Target. Picture B: DAPI. Picture C: merge of A+B



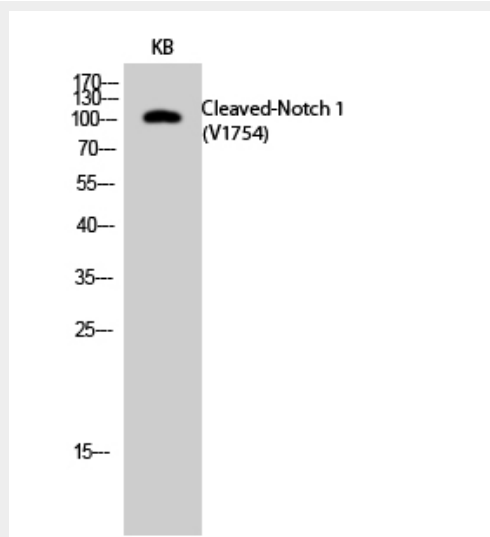
Immunofluorescence analysis of Human-lung-cancer tissue. 1, Cleaved-Notch 1 (V1754) Polyclonal Antibody (red) was diluted at 1:200 (4°C, overnight). 2, Cy3 labeled Secondary antibody was diluted at 1:300 (room temperature, 50 min). 3, Picture B: DAPI (blue) 10 min. Picture A: Target. Picture B: DAPI. Picture C: merge of A+B



Immunofluorescence analysis of Human-lung-cancer tissue. 1, Cleaved-Notch 1 (V1754) Polyclonal Antibody (red) was diluted at 1:200 (4°C, overnight). 2, Cy3 labeled Secondary antibody was diluted at 1:300 (room temperature, 50 min). 3, Picture B: DAPI (blue) 10 min. Picture A: Target. Picture B: DAPI. Picture C: merge of A+B



Western Blot analysis of various cells using Cleaved-Notch 1 (V1754) Polyclonal Antibody diluted at 1:500



Western Blot analysis of KB cells using Cleaved-Notch 1 (V1754) Polyclonal Antibody diluted at 1:500

Cleaved-Notch 1 (V1754) Polyclonal Antibody - Background

Functions as a receptor for membrane-bound ligands Jagged-1 (JAG1), Jagged-2 (JAG2) and Delta-1 (DLL1) to regulate cell-fate determination. Upon ligand activation through the released notch intracellular domain (NICD) it forms a transcriptional activator complex with RBPJ/RBPSUH and activates genes of the enhancer of split locus. Affects the implementation of differentiation,

proliferation and apoptotic programs. Involved in angiogenesis; negatively regulates endothelial cell proliferation and migration and angiogenic sprouting. Involved in the maturation of both CD4(+) and CD8(+) cells in the thymus. Important for follicular differentiation and possibly cell fate selection within the follicle. During cerebellar development, functions as a receptor for neuronal DNER and is involved in the differentiation of Bergmann glia. Represses neuronal and myogenic differentiation. May play an essential role in postimplantation development, probably in some aspect of cell specification and/or differentiation. May be involved in mesoderm development, somite formation and neurogenesis. May enhance HIF1A function by sequestering HIF1AN away from HIF1A. Required for the THBS4 function in regulating protective astrocytogenesis from the subventricular zone (SVZ) niche after injury. Involved in determination of left/right symmetry by modulating the balance between motile and immotile (sensory) cilia at the left-right organiser (LRO).