

DSCR1 Antibody (Center)
Purified Rabbit Polyclonal Antibody (Pab)
Catalog # AP6315b**Specification**

DSCR1 Antibody (Center) - Product Information

Application	WB,E
Primary Accession	P53805
Other Accession	Q7Z555
Reactivity	Human
Host	Rabbit
Clonality	Polyclonal
Isotype	Rabbit IgG
Calculated MW	28079
Antigen Region	75-104

DSCR1 Antibody (Center) - Additional Information**Gene ID** 1827**Other Names**

Calpressin-1, Adapt78, Down syndrome critical region protein 1, Myocyte-enriched calcineurin-interacting protein 1, MCIP1, Regulator of calcineurin 1, RCAN1, ADAPT78, CSP1, DSC1, DSCR1

Target/Specificity

This DSCR1 antibody is generated from rabbits immunized with a KLH conjugated synthetic peptide between 75-104 amino acids from the Central region of human DSCR1.

Dilution

WB~~1:1000

E~~Use at an assay dependent concentration.

Format

Purified polyclonal antibody supplied in PBS with 0.09% (W/V) sodium azide. This antibody is prepared by Saturated Ammonium Sulfate (SAS) precipitation followed by dialysis against PBS.

Storage

Maintain refrigerated at 2-8°C for up to 2 weeks. For long term storage store at -20°C in small aliquots to prevent freeze-thaw cycles.

Precautions

DSCR1 Antibody (Center) is for research use only and not for use in diagnostic or therapeutic procedures.

DSCR1 Antibody (Center) - Protein Information**Name** RCAN1

Synonyms ADAPT78, CSP1, DSC1, DSCR1

Function Inhibits calcineurin-dependent transcriptional responses by binding to the catalytic domain of calcineurin A (PubMed:[12809556](#)). Could play a role during central nervous system development (By similarity).

Tissue Location

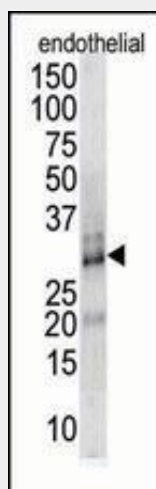
Highly expressed heart, brain and skeletal muscle. Also expressed in all other tissues

DSCR1 Antibody (Center) - Protocols

Provided below are standard protocols that you may find useful for product applications.

- [Western Blot](#)
- [Blocking Peptides](#)
- [Dot Blot](#)
- [Immunohistochemistry](#)
- [Immunofluorescence](#)
- [Immunoprecipitation](#)
- [Flow Cytometry](#)
- [Cell Culture](#)

DSCR1 Antibody (Center) - Images



The anti-DSCR1 Pab (Cat. #AP6315b) is used in Western blot to detect DSCR1 in endothelial cell lysate.



Endothelial cell lysate transferred to membrane was incubated with primary antibody at a 1:500 dilution in 2% BSA in TBST at 4 deg C overnight. Data courtesy of Dr. Katherine Healey, NWCRF Institute, School of Biological Sciences, University of Wales Bangor.

DSCR1 Antibody (Center) - Background

DSCR1 (calcipressin 1) interacts with calcineurin A and inhibits calcineurin-dependent signaling

pathways, possibly affecting central nervous system development. The gene for this protein is located in the minimal candidate region for the Down syndrome phenotype, and is overexpressed in the brain of Down syndrome fetuses. Chronic overexpression of this gene may lead to neurofibrillary tangles such as those associated with Alzheimer disease.

DSCR1 Antibody (Center) - References

Minami, T., et al., J. Biol. Chem. 279(48):50537-50554 (2004). Yao, Y.G., et al., Biochem. Biophys. Res. Commun. 321(3):648-656 (2004). Michtalik, H.J., et al., Free Radic. Biol. Med. 37(4):454-462 (2004). Hesser, B.A., et al., Blood 104(1):149-158 (2004). Iizuka, M., et al., Biochem. Biophys. Res. Commun. 41(4):334-344 (2004).