

Cleaved-Factor XII HC (R372) Polyclonal Antibody
Catalog # AP63160**Specification**

Cleaved-Factor XII HC (R372) Polyclonal Antibody - Product Information

Application	WB
Primary Accession	P00748
Reactivity	Human
Host	Rabbit
Clonality	Polyclonal

Cleaved-Factor XII HC (R372) Polyclonal Antibody - Additional Information**Gene ID** 2161**Other Names**

F12; Coagulation factor XII; Hageman factor; HAF

Dilution

WB~~Western Blot: 1/500 - 1/2000. ELISA: 1/20000. Not yet tested in other applications.

Format

Liquid in PBS containing 50% glycerol, 0.5% BSA and 0.09% (W/V) sodium azide.

Storage Conditions

-20°C

Cleaved-Factor XII HC (R372) Polyclonal Antibody - Protein Information**Name** F12**Function**

Factor XII is a serum glycoprotein that participates in the initiation of blood coagulation, fibrinolysis, and the generation of bradykinin and angiotensin. Prekallikrein is cleaved by factor XII to form kallikrein, which then cleaves factor XII first to alpha-factor XIIa and then trypsin cleaves it to beta-factor XIIa. Alpha-factor XIIa activates factor XI to factor XIa (PubMed:2019570, PubMed:21304106, PubMed:8427954).

Cellular Location

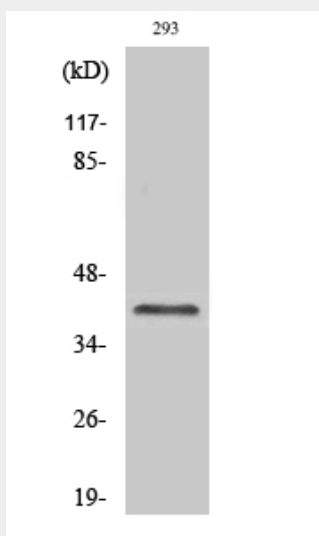
Secreted.

Cleaved-Factor XII HC (R372) Polyclonal Antibody - Protocols

Provided below are standard protocols that you may find useful for product applications.

- [Western Blot](#)
- [Blocking Peptides](#)
- [Dot Blot](#)
- [Immunohistochemistry](#)
- [Immunofluorescence](#)
- [Immunoprecipitation](#)
- [Flow Cytometry](#)
- [Cell Culture](#)

Cleaved-Factor XII HC (R372) Polyclonal Antibody - Images



Western Blot analysis of various cells using Cleaved-Factor XII HC (R372) Polyclonal Antibody

Cleaved-Factor XII HC (R372) Polyclonal Antibody - Background

Factor XII is a serum glycoprotein that participates in the initiation of blood coagulation, fibrinolysis, and the generation of bradykinin and angiotensin. Prekallikrein is cleaved by factor XII to form kallikrein, which then cleaves factor XII first to alpha-factor XIIa and then trypsin cleaves it to beta- factor XIIa. Alpha-factor XIIa activates factor XI to factor XIa.