

Cleaved-ITI-H2 (D702) Polyclonal Antibody
Catalog # AP63169**Specification**

Cleaved-ITI-H2 (D702) Polyclonal Antibody - Product Information

Application	WB
Primary Accession	P19823
Reactivity	Human
Host	Rabbit
Clonality	Polyclonal

Cleaved-ITI-H2 (D702) Polyclonal Antibody - Additional Information**Gene ID** 3698**Other Names**

ITIH2; IGHEP2; Inter-alpha-trypsin inhibitor heavy chain H2; ITI heavy chain H2; ITI-HC2; Inter-alpha-inhibitor heavy chain 2; Inter-alpha-trypsin inhibitor complex component II; Serum-derived hyaluronan-associated protein; SHAP

Dilution

WB~~Western Blot: 1/500 - 1/2000. ELISA: 1/10000. Not yet tested in other applications.

Format

Liquid in PBS containing 50% glycerol, 0.5% BSA and 0.09% (W/V) sodium azide.

Storage Conditions

-20°C

Cleaved-ITI-H2 (D702) Polyclonal Antibody - Protein Information**Name** ITIH2**Synonyms** IGHEP2**Function**

May act as a carrier of hyaluronan in serum or as a binding protein between hyaluronan and other matrix protein, including those on cell surfaces in tissues to regulate the localization, synthesis and degradation of hyaluronan which are essential to cells undergoing biological processes.

Cellular Location

Secreted.

Tissue Location

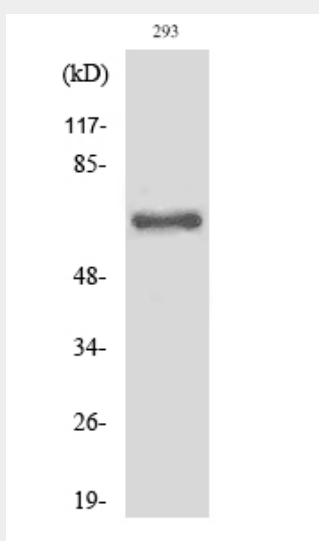
Plasma.

Cleaved-ITI-H2 (D702) Polyclonal Antibody - Protocols

Provided below are standard protocols that you may find useful for product applications.

- [Western Blot](#)
- [Blocking Peptides](#)
- [Dot Blot](#)
- [Immunohistochemistry](#)
- [Immunofluorescence](#)
- [Immunoprecipitation](#)
- [Flow Cytometry](#)
- [Cell Culture](#)

Cleaved-ITI-H2 (D702) Polyclonal Antibody - Images



Cleaved-ITI-H2 (D702) Polyclonal Antibody - Background

May act as a carrier of hyaluronan in serum or as a binding protein between hyaluronan and other matrix protein, including those on cell surfaces in tissues to regulate the localization, synthesis and degradation of hyaluronan which are essential to cells undergoing biological processes.