

**Cleaved-MASP-1 HC (R448) Polyclonal Antibody**  
**Catalog # AP63172****Specification**

---

**Cleaved-MASP-1 HC (R448) Polyclonal Antibody - Product Information**

Application	WB
Primary Accession	<a href="#">P48740</a>
Reactivity	Human
Host	Rabbit
Clonality	Polyclonal

**Cleaved-MASP-1 HC (R448) Polyclonal Antibody - Additional Information****Gene ID** 5648**Other Names**

MASP1; CRARF; CRARF1; PRSS5; Mannan-binding lectin serine protease 1; Complement factor MASP-3; Complement-activating component of Ra-reactive factor; Mannose-binding lectin-associated serine protease 1; MASP-1; Mannose-binding protein-asso

**Dilution**

WB~~Western Blot: 1/500 - 1/2000. ELISA: 1/10000. Not yet tested in other applications.

**Format**

Liquid in PBS containing 50% glycerol, 0.5% BSA and 0.09% (W/V) sodium azide.

**Storage Conditions**

-20°C

**Cleaved-MASP-1 HC (R448) Polyclonal Antibody - Protein Information****Name** MASP1**Synonyms** CRARF, CRARF1, PRSS5**Function**

Functions in the lectin pathway of complement, which performs a key role in innate immunity by recognizing pathogens through patterns of sugar moieties and neutralizing them. The lectin pathway is triggered upon binding of mannan-binding lectin (MBL) and ficolins to sugar moieties which leads to activation of the associated proteases MASP1 and MASP2. Functions as an endopeptidase and may activate MASP2 or C2 or directly activate C3 the key component of complement reaction. Isoform 2 may have an inhibitory effect on the activation of the lectin pathway of complement or may cleave IGFBP5. Also plays a role in development (PubMed:<a href="http://www.uniprot.org/citations/21258343" target="\_blank">21258343</a>).

**Cellular Location**

Secreted.

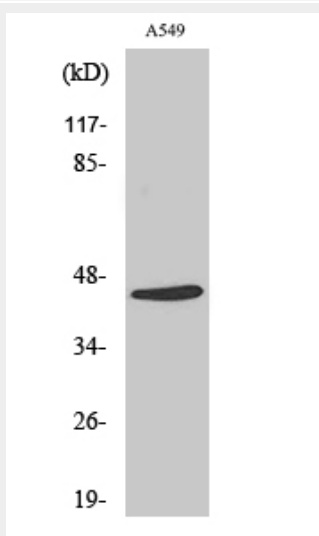
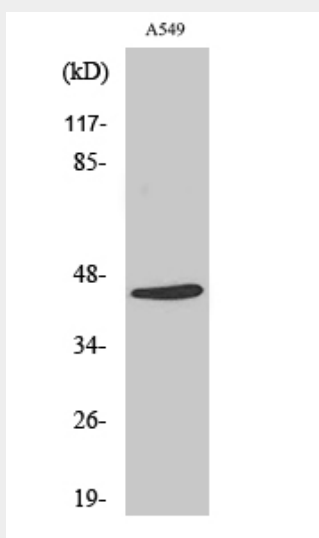
**Tissue Location**

Protein of the plasma which is primarily expressed by liver.

**Cleaved-MASP-1 HC (R448) Polyclonal Antibody - Protocols**

Provided below are standard protocols that you may find useful for product applications.

- [Western Blot](#)
- [Blocking Peptides](#)
- [Dot Blot](#)
- [Immunohistochemistry](#)
- [Immunofluorescence](#)
- [Immunoprecipitation](#)
- [Flow Cytometry](#)
- [Cell Culture](#)

**Cleaved-MASP-1 HC (R448) Polyclonal Antibody - Images**

**Cleaved-MASP-1 HC (R448) Polyclonal Antibody - Background**

Functions in the lectin pathway of complement, which performs a key role in innate immunity by recognizing pathogens through patterns of sugar moieties and neutralizing them. The lectin pathway is triggered upon binding of mannan-binding lectin (MBL) and ficolins to sugar moieties which leads to activation of the associated proteases MASP1 and MASP2. Functions as an endopeptidase and may activate MASP2 or C2 or directly activate C3 the key component of complement reaction. Isoform 2 may have an inhibitory effect on the activation of the lectin pathway of complement or may cleave IGFBP5. Also plays a role in development (PubMed:21258343).