

Cleaved-Thrombin R (S42) Polyclonal Antibody
Catalog # AP63179**Specification****Cleaved-Thrombin R (S42) Polyclonal Antibody - Product Information**

Application	WB
Primary Accession	P25116
Reactivity	Human
Host	Rabbit
Clonality	Polyclonal

Cleaved-Thrombin R (S42) Polyclonal Antibody - Additional Information**Gene ID** 2149**Other Names**

F2R; CF2R; PAR1; TR; Proteinase-activated receptor 1; PAR-1; Coagulation factor II receptor; Thrombin receptor

Dilution

WB~~Western Blot: 1/500 - 1/2000. ELISA: 1/20000. Not yet tested in other applications.

Format

Liquid in PBS containing 50% glycerol, 0.5% BSA and 0.09% (W/V) sodium azide.

Storage Conditions

-20°C

Cleaved-Thrombin R (S42) Polyclonal Antibody - Protein Information**Name** F2R ([HGNC:3537](#))**Synonyms** CF2R, PAR1, TR**Function**

High affinity receptor that binds the activated thrombin, leading to calcium release from intracellular stores (PubMed:1672265, PubMed:8136362). The thrombin-activated receptor signaling pathway is mediated through PTX-insensitive G proteins, activation of phospholipase C resulting in the production of 1D-myo-inositol 1,4,5- trisphosphate (InsP3) which binds to InsP3 receptors causing calcium release from the stores (By similarity). In astrocytes, the calcium released into the cytosol allows the Ca(2+)-dependent release of L- glutamate into the synaptic cleft through BEST1, that targets the neuronal postsynaptic GRIN2A/NMDAR receptor resulting in the synaptic plasticity regulation (By similarity). May play a role in platelets activation and in vascular development (PubMed:10079109). Mediates up-regulation of pro-inflammatory cytokines, such as MCP-1/CCL2 and IL6, triggered by coagulation factor Xa (F10) in cardiac fibroblasts and umbilical vein endothelial cells (PubMed:30568593, PubMed:34831181).

Cellular Location

Cell membrane {ECO:0000250|UniProtKB:P26824}; Multi-pass membrane protein {ECO:0000250|UniProtKB:P26824}

Tissue Location

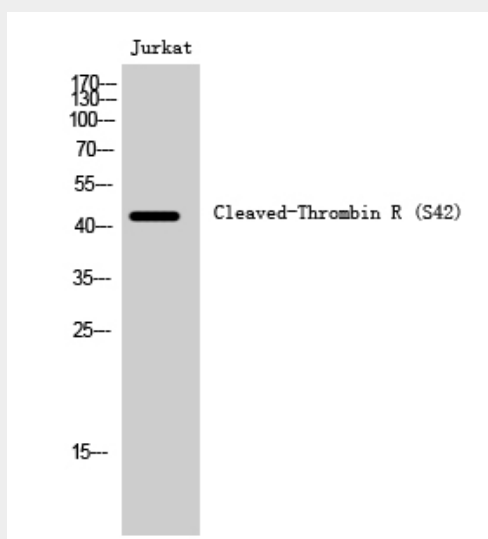
Platelets and vascular endothelial cells.

Cleaved-Thrombin R (S42) Polyclonal Antibody - Protocols

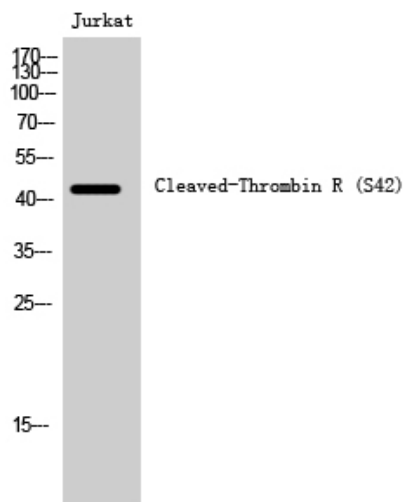
Provided below are standard protocols that you may find useful for product applications.

- [Western Blot](#)
- [Blocking Peptides](#)
- [Dot Blot](#)
- [Immunohistochemistry](#)
- [Immunofluorescence](#)
- [Immunoprecipitation](#)
- [Flow Cytometry](#)
- [Cell Culture](#)

Cleaved-Thrombin R (S42) Polyclonal Antibody - Images



Western Blot analysis of Jurkat cells using Cleaved-Thrombin R (S42) Polyclonal Antibody



Western Blot analysis of Jurkat cells using Cleaved-Thrombin R (S42) Polyclonal Antibody

Cleaved-Thrombin R (S42) Polyclonal Antibody - Background

High affinity receptor for activated thrombin coupled to G proteins that stimulate phosphoinositide hydrolysis. May play a role in platelets activation and in vascular development.