

DSCR3 Antibody (N-term)
Purified Rabbit Polyclonal Antibody (Pab)
Catalog # AP6319a**Specification**

DSCR3 Antibody (N-term) - Product Information

Application	WB,E
Primary Accession	O14972
Reactivity	Human
Host	Rabbit
Clonality	Polyclonal
Isotype	Rabbit IgG
Calculated MW	33010
Antigen Region	1-30

DSCR3 Antibody (N-term) - Additional Information**Gene ID** 10311**Other Names**

Down syndrome critical region protein 3, Down syndrome critical region protein A, DSCR3, DCRA, DSCRA

Target/Specificity

This DSCR3 antibody is generated from rabbits immunized with a KLH conjugated synthetic peptide between 1-30 amino acids from the N-terminal region of human DSCR3.

Dilution

WB~~1:1000

Format

Purified polyclonal antibody supplied in PBS with 0.09% (W/V) sodium azide. This antibody is prepared by Saturated Ammonium Sulfate (SAS) precipitation followed by dialysis against PBS.

Storage

Maintain refrigerated at 2-8°C for up to 2 weeks. For long term storage store at -20°C in small aliquots to prevent freeze-thaw cycles.

Precautions

DSCR3 Antibody (N-term) is for research use only and not for use in diagnostic or therapeutic procedures.

DSCR3 Antibody (N-term) - Protein Information**Name** VPS26C ([HGNC:3044](#))

Function Acts as a component of the retriever complex. The retriever complex is a heterotrimeric complex related to retromer cargo-selective complex (CSC) and essential for

retromer-independent retrieval and recycling of numerous cargos such as integrin alpha-5/beta-1 (ITGA5:ITGB1) (PubMed:[28892079](#)). The recruitment of the retriever complex to the endosomal membrane involves CCC and WASH complexes (PubMed:[28892079](#)). In the endosomes, drives the retriever and recycling of NxxY-motif-containing cargo proteins by coupling to SNX17, a cargo essential for the homeostatic maintenance of numerous cell surface proteins associated with processes that include cell migration, cell adhesion, nutrient supply and cell signaling (PubMed:[28892079](#)).

Cellular Location

Endosome.

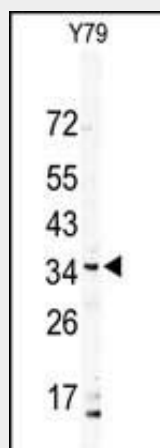
Tissue Location

Ubiquitously expressed.

DSCR3 Antibody (N-term) - Protocols

Provided below are standard protocols that you may find useful for product applications.

- [Western Blot](#)
- [Blocking Peptides](#)
- [Dot Blot](#)
- [Immunohistochemistry](#)
- [Immunofluorescence](#)
- [Immunoprecipitation](#)
- [Flow Cytometry](#)
- [Cell Culture](#)

DSCR3 Antibody (N-term) - Images

Western blot analysis of DSCR3 Antibody (N-term) (Cat.#AP6319a) in Y79 cell line lysates (35ug/lane). DSCR3 (arrow) was detected using the purified Pab.

DSCR3 Antibody (N-term) - Background

The region of chromosome 21 between genes CBR and ERG (CBR-ERG region), which spans 2.5 Mb on 21q22.2, has been defined by analysis of patients with partial trisomy 21. It contributes significantly to the pathogenesis of many characteristics of Down syndrome, including morphological features, hypotonia, and mental retardation. The DSCR3 (Down syndrome critical region gene 3) gene is found in this region and is predicted to contain eight exons. DSCR3 is expressed in most tissues examined.

DSCR3 Antibody (N-term) - References

Dahmane, N., et al., Genomics 48(1):12-23 (1998).
Nakamura, A., et al., J. Biochem. 122(4):872-877 (1997).