

Acetyl eIF5A/eIF5A2 (K47) Polyclonal Antibody
Catalog # AP63218**Specification****Acetyl eIF5A/eIF5A2 (K47) Polyclonal Antibody - Product Information**

Application	WB
Primary Accession	Q9GZV4
Reactivity	Human, Mouse, Rat
Host	Rabbit
Clonality	Polyclonal

Acetyl eIF5A/eIF5A2 (K47) Polyclonal Antibody - Additional Information**Gene ID** 56648**Other Names**

EIF5A2; Eukaryotic translation initiation factor 5A-2; eIF-5A-2; eIF-5A2; Eukaryotic initiation factor 5A isoform 2

Dilution

WB~~Western Blot: 1/500 - 1/2000. ELISA: 1/20000. Not yet tested in other applications.

Format

Liquid in PBS containing 50% glycerol, 0.5% BSA and 0.09% (W/V) sodium azide.

Storage Conditions

-20°C

Acetyl eIF5A/eIF5A2 (K47) Polyclonal Antibody - Protein Information**Name** EIF5A2**Function**

Translation factor that promotes translation elongation and termination, particularly upon ribosome stalling at specific amino acid sequence contexts (PubMed:14622290). Binds between the exit (E) and peptidyl (P) site of the ribosome and promotes rescue of stalled ribosome: specifically required for efficient translation of polyproline-containing peptides as well as other motifs that stall the ribosome. Acts as a ribosome quality control (RQC) cofactor by joining the RQC complex to facilitate peptidyl transfer during CAT tailing step (By similarity). Also involved in actin dynamics and cell cycle progression, mRNA decay and probably in a pathway involved in stress response and maintenance of cell wall integrity (By similarity).

Cellular Location

Cytoplasm {ECO:0000250|UniProtKB:P63241}. Nucleus {ECO:0000250|UniProtKB:P63241}. Endoplasmic reticulum membrane {ECO:0000250|UniProtKB:P63241}; Peripheral membrane protein {ECO:0000250|UniProtKB:P63241}; Cytoplasmic side {ECO:0000250|UniProtKB:P63241}. Note=Hypusine modification promotes the nuclear export and cytoplasmic localization and there

was a dynamic shift in the localization from predominantly cytoplasmic to primarily nuclear under apoptotic inducing conditions {ECO:0000250|UniProtKB:P63241}

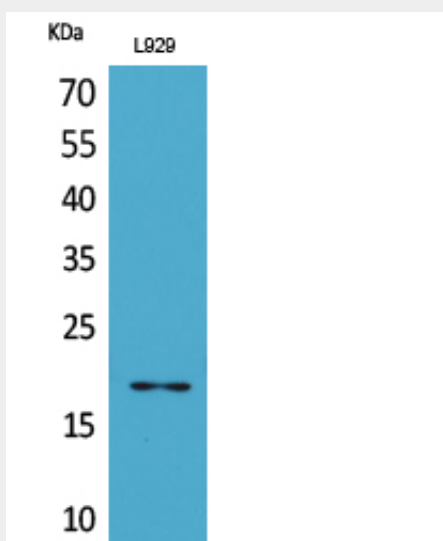
Tissue Location

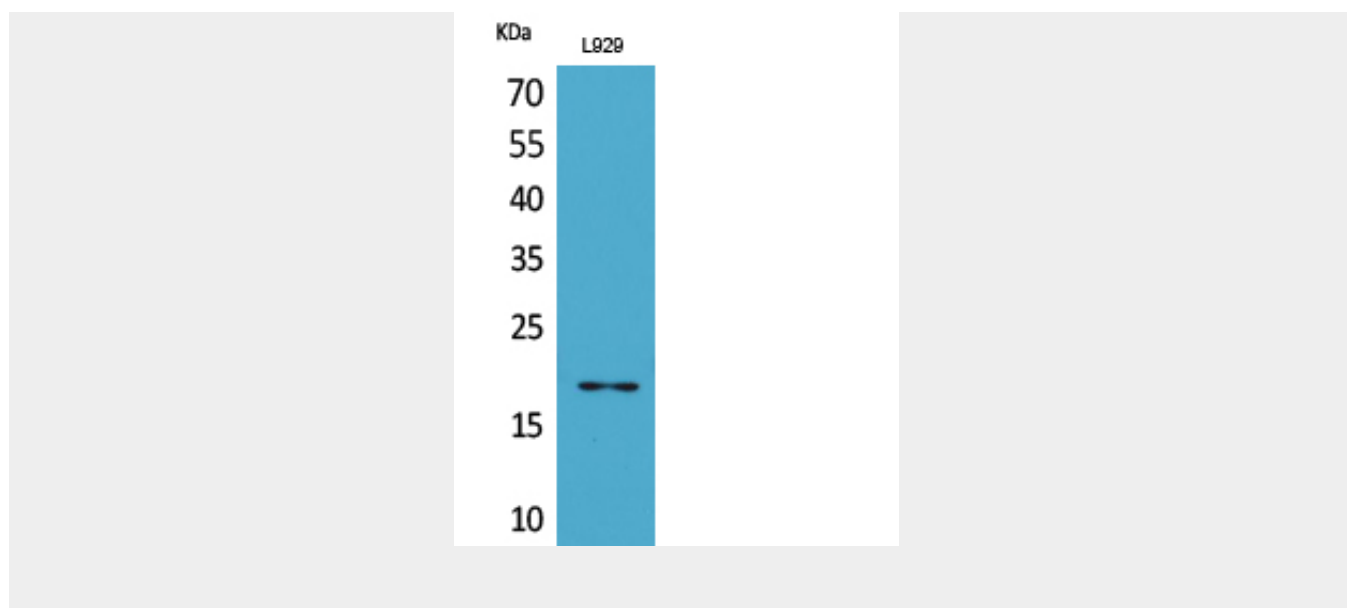
Expressed in ovarian and colorectal cancer cell lines (at protein level). Highly expressed in testis. Overexpressed in some cancer cells.

Acetyl eIF5A/eIF5A2 (K47) Polyclonal Antibody - Protocols

Provided below are standard protocols that you may find useful for product applications.

- [Western Blot](#)
- [Blocking Peptides](#)
- [Dot Blot](#)
- [Immunohistochemistry](#)
- [Immunofluorescence](#)
- [Immunoprecipitation](#)
- [Flow Cytometry](#)
- [Cell Culture](#)

Acetyl eIF5A/eIF5A2 (K47) Polyclonal Antibody - Images



Acetyl eIF5A/eIF5A2 (K47) Polyclonal Antibody - Background

mRNA-binding protein involved in translation elongation. Has an important function at the level of mRNA turnover, probably acting downstream of decapping. Involved in actin dynamics and cell cycle progression, mRNA decay and probably in a pathway involved in stress response and maintenance of cell wall integrity. Functions as a regulator of apoptosis. Mediates effects of polyamines on neuronal process extension and survival. May play an important role in brain development and function, and in skeletal muscle stem cell differentiation (By similarity).