

**Kallikrein 4 (KLK4) Antibody (Center)**  
**Purified Rabbit Polyclonal Antibody (Pab)**  
**Catalog # AP6323a****Specification**

---

**Kallikrein 4 (KLK4) Antibody (Center) - Product Information**

Application	WB,E
Primary Accession	<a href="#">Q9Y5K2</a>
Reactivity	Human, Mouse
Host	Rabbit
Clonality	Polyclonal
Isotype	Rabbit IgG
Calculated MW	27032
Antigen Region	85-115

**Kallikrein 4 (KLK4) Antibody (Center) - Additional Information****Gene ID** 9622**Other Names**

Kallikrein-4, 3421-, Enamel matrix serine proteinase 1, Kallikrein-like protein 1, KLK-L1, Prostate, Serine protease 17, KLK4, EMSP1, PRSS17, PSTS

**Target/Specificity**

This Kallikrein 4 (KLK4) antibody is generated from rabbits immunized with a KLH conjugated synthetic peptide between 85-115 amino acids from the Central region of human Kallikrein 4 (KLK4).

**Dilution**

WB~~1:1000

E~~Use at an assay dependent concentration.

**Format**

Purified polyclonal antibody supplied in PBS with 0.09% (W/V) sodium azide. This antibody is prepared by Saturated Ammonium Sulfate (SAS) precipitation followed by dialysis against PBS.

**Storage**

Maintain refrigerated at 2-8°C for up to 2 weeks. For long term storage store at -20°C in small aliquots to prevent freeze-thaw cycles.

**Precautions**

Kallikrein 4 (KLK4) Antibody (Center) is for research use only and not for use in diagnostic or therapeutic procedures.

**Kallikrein 4 (KLK4) Antibody (Center) - Protein Information****Name** KLK4

**Synonyms** EMSP1, PRSS17, PSTS

**Function** Has a major role in enamel formation (PubMed:[15235027](#)). Required during the maturation stage of tooth development for clearance of enamel proteins and normal structural patterning of the crystalline matrix (By similarity).

**Cellular Location**

Secreted.

**Tissue Location**

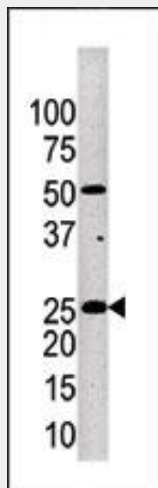
Expressed in prostate.

### Kallikrein 4 (KLK4) Antibody (Center) - Protocols

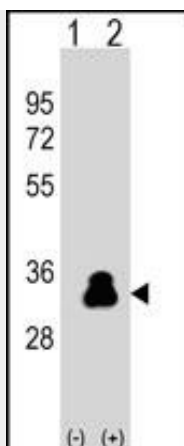
Provided below are standard protocols that you may find useful for product applications.

- [Western Blot](#)
- [Blocking Peptides](#)
- [Dot Blot](#)
- [Immunohistochemistry](#)
- [Immunofluorescence](#)
- [Immunoprecipitation](#)
- [Flow Cytometry](#)
- [Cell Culture](#)

### Kallikrein 4 (KLK4) Antibody (Center) - Images



Western blot analysis of anti-KLK4 Pab (Cat. #AP6323a) in mouse brain tissue lysate. KLK4 (arrow) was detected using the purified Pab.



Western blot analysis of KLK4 (arrow) using rabbit polyclonal KLK4 Antibody (S100) (Cat. #AP6323a). 293 cell lysates (2 ug/lane) either nontransfected (Lane 1) or transiently transfected (Lane 2) with the KLK4 gene.

#### **Kallikrein 4 (KLK4) Antibody (Center) - Background**

Kallikreins are a subgroup of serine proteases having diverse physiological functions. Growing evidence suggests that many kallikreins are implicated in carcinogenesis and some have potential as novel cancer and other disease biomarkers. In some tissues KLK4 expression is hormonally regulated. The expression pattern of a similar mouse protein in murine developing teeth supports a role for the protein in the degradation of enamel proteins.

#### **Kallikrein 4 (KLK4) Antibody (Center) - References**

- Hart, P.S., et al., J. Med. Genet. 41(7):545-549 (2004).
- Xi, Z., et al., Cancer Res. 64(7):2365-2370 (2004).
- Hural, J.A., et al., J. Immunol. 169(1):557-565 (2002).
- Takayama, T.K., et al., Biochemistry 40(50):15341-15348 (2001).
- Korkmaz, K.S., et al., DNA Cell Biol. 20(7):435-445 (2001).