

Kallikrein 5 Antibody (Center)
Purified Rabbit Polyclonal Antibody (Pab)
Catalog # AP6324b**Specification**

Kallikrein 5 Antibody (Center) - Product Information

Application	WB,E
Primary Accession	O9Y337
Reactivity	Human, Mouse
Host	Rabbit
Clonality	Polyclonal
Isotype	Rabbit IgG
Antigen Region	144-174

Kallikrein 5 Antibody (Center) - Additional Information**Gene ID** 25818**Other Names**

Kallikrein-5, 3421-, Kallikrein-like protein 2, KLK-L2, Stratum corneum tryptic enzyme, KLK5, SCTE

Target/Specificity

This Kallikrein 5 antibody is generated from rabbits immunized with a KLH conjugated synthetic peptide between 144-174 amino acids from the Central region of human Kallikrein 5.

Dilution

WB~~1:1000

E~~Use at an assay dependent concentration.

Format

Purified polyclonal antibody supplied in PBS with 0.09% (W/V) sodium azide. This antibody is prepared by Saturated Ammonium Sulfate (SAS) precipitation followed by dialysis against PBS.

Storage

Maintain refrigerated at 2-8°C for up to 2 weeks. For long term storage store at -20°C in small aliquots to prevent freeze-thaw cycles.

Precautions

Kallikrein 5 Antibody (Center) is for research use only and not for use in diagnostic or therapeutic procedures.

Kallikrein 5 Antibody (Center) - Protein Information**Name** KLK5 ([HGNC:6366](#))**Function** May be involved in desquamation.**Cellular Location**

Secreted.

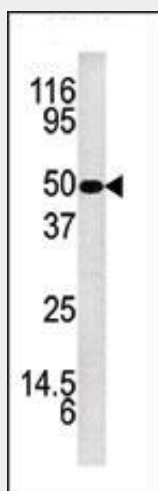
Tissue Location

Expressed in skin, breast, brain and testis. Expressed at the stratum granulosum of palmar skin

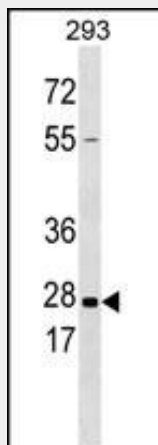
Kallikrein 5 Antibody (Center) - Protocols

Provided below are standard protocols that you may find useful for product applications.

- [Western Blot](#)
- [Blocking Peptides](#)
- [Dot Blot](#)
- [Immunohistochemistry](#)
- [Immunofluorescence](#)
- [Immunoprecipitation](#)
- [Flow Cytometry](#)
- [Cell Culture](#)

Kallikrein 5 Antibody (Center) - Images

Western blot analysis of anti-KLK5 Pab (Cat. #AP6324b) in mouse brain tissue lysate. KLK5 (arrow) was detected using the purified Pab.



KLK5 Antibody (L159) (Cat. #AP6324b) western blot analysis in 293 cell line lysates

(35ug/lane). This demonstrates the KLK5 antibody detected the KLK5 protein (arrow).

Kallikrein 5 Antibody (Center) - Background

Kallikreins are a subgroup of serine proteases having diverse physiological functions. Growing evidence suggests that many kallikreins are implicated in carcinogenesis and some have potential as novel cancer and other disease biomarkers. KLK5 expression is up-regulated by estrogens and progestins. The protein is secreted and may be involved in desquamation in the epidermis.

Kallikrein 5 Antibody (Center) - References

Planque, C., et al., Biochem. Biophys. Res. Commun. 329(4):1260-1266 (2005). Michael, I.P., et al., J. Biol. Chem. 280(15):14628-14635 (2005). Ishida-Yamamoto, A., et al., J. Invest. Dermatol. 124(2):360-366 (2005). Brattsand, M., et al., J. Invest. Dermatol. 124(1):198-203 (2005). Caubet, C., et al., J. Invest. Dermatol. 122(5):1235-1244 (2004).

Kallikrein 5 Antibody (Center) - Citations

- [Loss of ceramide synthase 3 causes lethal skin barrier disruption.](#)