

**Kallikrein 7 Antibody (C-term)**  
**Purified Rabbit Polyclonal Antibody (Pab)**  
**Catalog # AP6326b****Specification**

---

**Kallikrein 7 Antibody (C-term) - Product Information**

Application	FC, WB, IHC-P,E
Primary Accession	<a href="#">P49862</a>
Reactivity	Human
Host	Rabbit
Clonality	Polyclonal
Isotype	Rabbit IgG
Calculated MW	27525
Antigen Region	157-187

**Kallikrein 7 Antibody (C-term) - Additional Information****Gene ID** 5650**Other Names**

Kallikrein-7, hK7, Serine protease 6, Stratum corneum chymotryptic enzyme, hSCCE, KLK7, PRSS6, SCCE

**Target/Specificity**

This Kallikrein 7 antibody is generated from rabbits immunized with a KLH conjugated synthetic peptide between 157-187 amino acids from the C-terminal region of human Kallikrein 7.

**Dilution**

FC~~1:10~50

WB~~1:1000

IHC-P~~1:10~50

E~~Use at an assay dependent concentration.

**Format**

Purified polyclonal antibody supplied in PBS with 0.09% (W/V) sodium azide. This antibody is prepared by Saturated Ammonium Sulfate (SAS) precipitation followed by dialysis against PBS.

**Storage**

Maintain refrigerated at 2-8°C for up to 2 weeks. For long term storage store at -20°C in small aliquots to prevent freeze-thaw cycles.

**Precautions**

Kallikrein 7 Antibody (C-term) is for research use only and not for use in diagnostic or therapeutic procedures.

**Kallikrein 7 Antibody (C-term) - Protein Information****Name** KLK7

**Synonyms** PRSS6, SCCE

**Function** May catalyze the degradation of intercellular cohesive structures in the cornified layer of the skin in the continuous shedding of cells from the skin surface. Specific for amino acid residues with aromatic side chains in the P1 position. Cleaves insulin A chain at '14-Tyr-|-Gln-15' and insulin B chain at '6-Leu-|-Cys-7', '16-Tyr-|-Leu-17', '25-Phe-|-Tyr-26' and '26-Tyr-|-Thr-27'. Could play a role in the activation of precursors to inflammatory cytokines.

**Cellular Location**

Secreted. Note=In ovarian carcinoma, secreted and also observed at the apical membrane and in cytoplasm at the invasive front

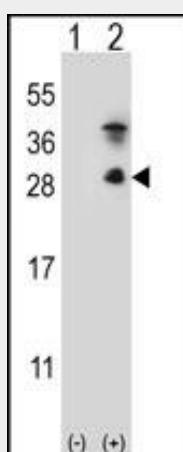
**Tissue Location**

Abundantly expressed in the skin and is expressed by keratinocytes in the epidermis. Also expressed in the brain, mammary gland, cerebellum, spinal cord and kidney. Lower levels in salivary glands, uterus, thymus, thyroid, placenta, trachea and testis. Up-regulated in ovarian carcinoma, especially late-stage serous carcinoma, compared with normal ovaries and benign adenomas (at protein level)

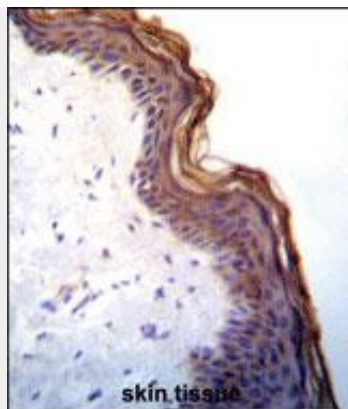
**Kallikrein 7 Antibody (C-term) - Protocols**

Provided below are standard protocols that you may find useful for product applications.

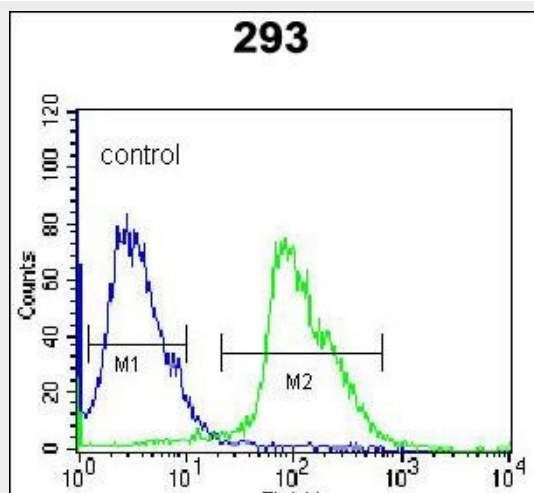
- [Western Blot](#)
- [Blocking Peptides](#)
- [Dot Blot](#)
- [Immunohistochemistry](#)
- [Immunofluorescence](#)
- [Immunoprecipitation](#)
- [Flow Cytometry](#)
- [Cell Culture](#)

**Kallikrein 7 Antibody (C-term) - Images**

Western blot analysis of KLK7 (arrow) using rabbit polyclonal KLK7 Antibody (S172) (Cat. #AP6326b). 293 cell lysates (2 ug/lane) either nontransfected (Lane 1) or transiently transfected (Lane 2) with the KLK7 gene.



Kallikrein 7(KLK7) Antibody (C-term) (Cat. #AP6326b) immunohistochemistry analysis in formalin fixed and paraffin embedded human skin tissue followed by peroxidase conjugation of the secondary antibody and DAB staining. This data demonstrates the use of Kallikrein 7(KLK7) Antibody (C-term) for immunohistochemistry. Clinical relevance has not been evaluated.



Kallikrein 7 (KLK7) Antibody (C-term) (Cat. #AP6326b) flow cytometric analysis of 293 cells (right histogram) compared to a negative control cell (left histogram). FITC-conjugated goat-anti-rabbit secondary antibodies were used for the analysis.

#### **Kallikrein 7 Antibody (C-term) - Background**

Kallikreins are a subgroup of serine proteases having diverse physiological functions. Growing evidence suggests that many kallikreins are implicated in carcinogenesis and some have potential as novel cancer and other disease biomarkers. The KLK7 enzyme is thought to be involved in the proteolysis of intercellular cohesive structures preceding desquamation, which is the shedding of the outermost layer of the epidermis.

#### **Kallikrein 7 Antibody (C-term) - References**

- Planque, C., et al., Biochem. Biophys. Res. Commun. 329(4):1260-1266 (2005).
- Ishida-Yamamoto, A., et al., J. Invest. Dermatol. 124(2):360-366 (2005).
- Vasilopoulos, Y., et al., J. Invest. Dermatol. 123(1):62-66 (2004).
- Santin, A.D., et al., Gynecol. Oncol. 94(2):283-288 (2004).
- Caubet, C., et al., J. Invest. Dermatol. 122(5):1235-1244 (2004).