

Kallikrein 9 Antibody (N-term)
Purified Rabbit Polyclonal Antibody (Pab)
Catalog # AP6328A**Specification**

Kallikrein 9 Antibody (N-term) - Product Information

Application	WB,E
Primary Accession	Q9UKQ9
Reactivity	Human, Mouse
Host	Rabbit
Clonality	Polyclonal
Isotype	Rabbit IgG
Calculated MW	27513
Antigen Region	1-30

Kallikrein 9 Antibody (N-term) - Additional Information**Gene ID** 284366**Other Names**

Kallikrein-9, 3421-, Kallikrein-like protein 3, KLK-L3, KLK9

Target/Specificity

This Kallikrein 9 antibody is generated from rabbits immunized with a KLH conjugated synthetic peptide between 1-30 amino acids from the N-terminal region of human Kallikrein 9.

Dilution

WB~~1:1000

E~~Use at an assay dependent concentration.

Format

Purified polyclonal antibody supplied in PBS with 0.09% (W/V) sodium azide. This antibody is purified through a protein A column, followed by peptide affinity purification.

Storage

Maintain refrigerated at 2-8°C for up to 2 weeks. For long term storage store at -20°C in small aliquots to prevent freeze-thaw cycles.

Precautions

Kallikrein 9 Antibody (N-term) is for research use only and not for use in diagnostic or therapeutic procedures.

Kallikrein 9 Antibody (N-term) - Protein Information**Name** KLK9**Cellular Location**

Secreted.

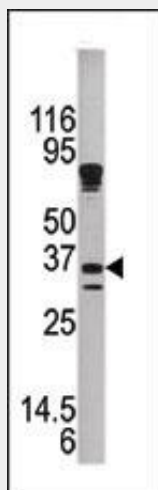
Tissue Location

Skin, thymus, trachea, cerebellum and spinal cord.

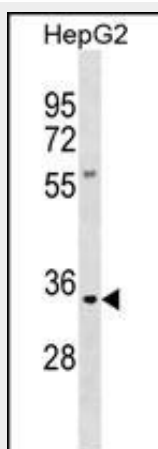
Kallikrein 9 Antibody (N-term) - Protocols

Provided below are standard protocols that you may find useful for product applications.

- [Western Blot](#)
- [Blocking Peptides](#)
- [Dot Blot](#)
- [Immunohistochemistry](#)
- [Immunofluorescence](#)
- [Immunoprecipitation](#)
- [Flow Cytometry](#)
- [Cell Culture](#)

Kallikrein 9 Antibody (N-term) - Images

Western blot analysis of anti-KLK9 Pab (Cat. #AP6328a) in mouse brain tissue lysate. KLK9 (arrow) was detected using the purified Pab.



KLK9 Antibody (N-term) (Cat. #AP6328a) western blot analysis in HepG2 cell line lysates (35ug/lane). This demonstrates the KLK9 antibody detected the KLK9 protein (arrow).

Kallikrein 9 Antibody (N-term) - Background

Kallikreins are a subgroup of serine proteases having diverse physiological functions. Growing evidence suggests that many kallikreins are implicated in carcinogenesis and some have potential as novel cancer and other disease biomarkers. KLK9 is a novel kallikrein with potential application for diagnosis, monitoring and therapeutics of various cancers including those of the breast, prostate and testis.

Kallikrein 9 Antibody (N-term) - References

- Yousef, G.M., et al., Genomics 65(2):184-194 (2000).
Diamandis, E.P., et al., Trends Endocrinol. Metab. 11(2):54-60 (2000).
Yousef, G.M., et al., Anticancer Res. 19 (4B), 2843-2852 (1999).
Yousef, G.M., et al., Anticancer Res. 79, 2843-2852 (1999).