

CK19 Monoclonal Antibody(11F5)
Catalog # AP63305**Specification**

CK19 Monoclonal Antibody(11F5) - Product Information

Application	IHC-P
Primary Accession	P08727
Reactivity	Human, Mouse, Rat
Host	Mouse
Clonality	Monoclonal

CK19 Monoclonal Antibody(11F5) - Additional Information**Gene ID** 3880**Other Names**

KRT19; Keratin, type I cytoskeletal 19; Cytokeratin-19; CK-19; Keratin-19; K19

Dilution

IHC-P~~N/A

Format

PBS, pH 7.4, containing 0.09% (W/V) sodium azide as Preservative and 50% Glycerol.

Storage Conditions

-20°C

CK19 Monoclonal Antibody(11F5) - Protein Information**Name** KRT19**Function**

Involved in the organization of myofibers. Together with KRT8, helps to link the contractile apparatus to dystrophin at the costameres of striated muscle.

Tissue Location

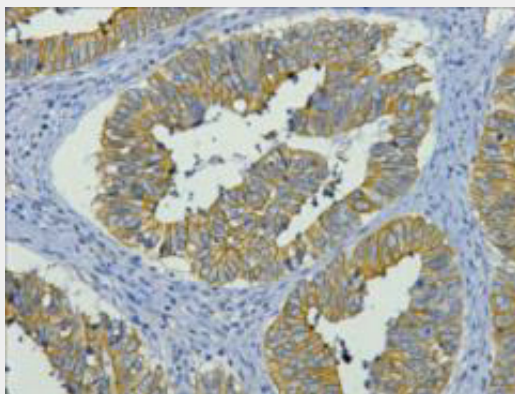
Expressed in a defined zone of basal keratinocytes in the deep outer root sheath of hair follicles. Also observed in sweat gland and mammary gland ductal and secretory cells, bile ducts, gastrointestinal tract, bladder urothelium, oral epithelia, esophagus, ectocervical epithelium (at protein level). Expressed in epidermal basal cells, in nipple epidermis and a defined region of the hair follicle. Also seen in a subset of vascular wall cells in both the veins and artery of human umbilical cord, and in umbilical cord vascular smooth muscle. Observed in muscle fibers accumulating in the costameres of myoplasm at the sarcolemma in structures that contain dystrophin and spectrin.

CK19 Monoclonal Antibody(11F5) - Protocols

Provided below are standard protocols that you may find useful for product applications.

- [Western Blot](#)
- [Blocking Peptides](#)
- [Dot Blot](#)
- [Immunohistochemistry](#)
- [Immunofluorescence](#)
- [Immunoprecipitation](#)
- [Flow Cytometry](#)
- [Cell Culture](#)

CK19 Monoclonal Antibody(11F5) - Images



CK19 Monoclonal Antibody(11F5) - Background

Involved in the organization of myofibers. Together with KRT8, helps to link the contractile apparatus to dystrophin at the costameres of striated muscle.