

**CK17 Monoclonal Antibody(10A1)**  
**Catalog # AP63335****Specification**

---

**CK17 Monoclonal Antibody(10A1) - Product Information**

Application	WB, IHC-P, IF, IP
Primary Accession	<a href="#">Q04695</a>
Reactivity	Human
Host	Mouse
Clonality	Monoclonal

**CK17 Monoclonal Antibody(10A1) - Additional Information****Gene ID** 3872**Other Names**

KRT17; Keratin, type I cytoskeletal 17; 39.1; Cytokeratin-17; CK-17; Keratin-17; K17

**Dilution**

WB~~WB: 1:1000 IP:1:200 IF 1:200 IHC 1:50-300

IHC-P~~N/A

IF~~WB: 1:1000 IP:1:200 IF 1:200 IHC 1:50-300

IP~~N/A

**Format**

PBS, pH 7.4, containing 0.09% (W/V) sodium azide as Preservative and 50% Glycerol.

**Storage Conditions**

-20°C

**CK17 Monoclonal Antibody(10A1) - Protein Information****Name** KRT17**Function**

Type I keratin involved in the formation and maintenance of various skin appendages, specifically in determining shape and orientation of hair (By similarity). Required for the correct growth of hair follicles, in particular for the persistence of the anagen (growth) state (By similarity). Modulates the function of TNF-alpha in the specific context of hair cycling. Regulates protein synthesis and epithelial cell growth through binding to the adapter protein SFN and by stimulating Akt/mTOR pathway (By similarity). Involved in tissue repair. May be a marker of basal cell differentiation in complex epithelia and therefore indicative of a certain type of epithelial 'stem cells'. Acts as a promoter of epithelial proliferation by acting a regulator of immune response in skin: promotes Th1/Th17-dominated immune environment contributing to the development of basaloid skin tumors (By similarity). May act as an autoantigen in the immunopathogenesis of psoriasis, with certain peptide regions being a major target for autoreactive T-cells and hence causing their proliferation.

**Cellular Location**

Cytoplasm {ECO:0000250|UniProtKB:Q9QWL7}.

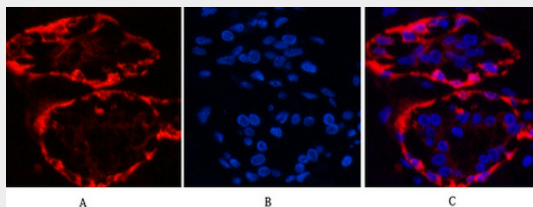
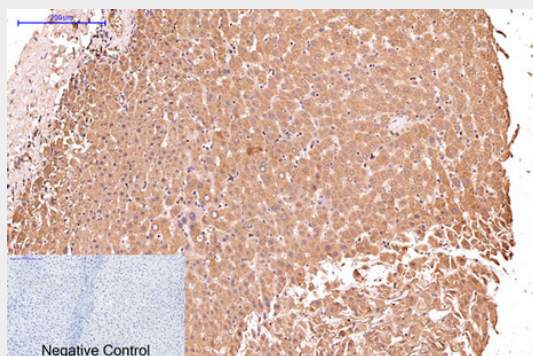
**Tissue Location**

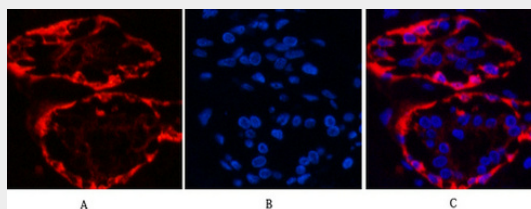
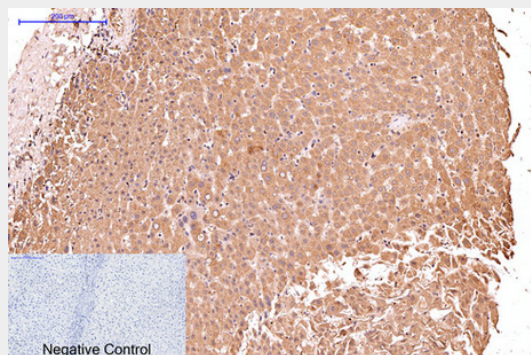
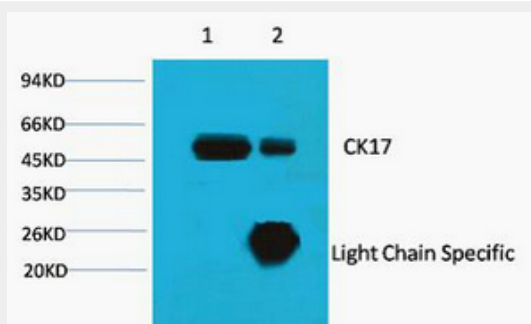
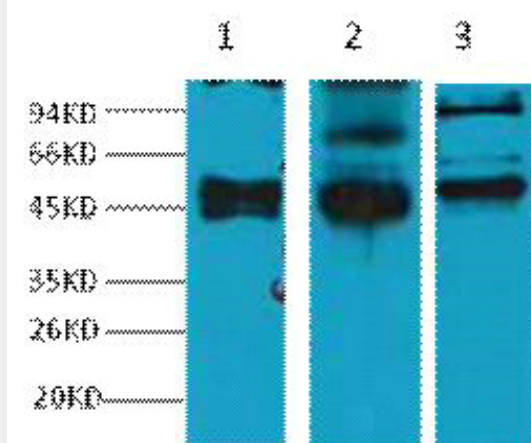
Expressed in the outer root sheath and medulla region of hair follicle specifically from eyebrow and beard, digital pulp, nail matrix and nail bed epithelium, mucosal stratified squamous epithelia and in basal cells of oral epithelium, palmoplantar epidermis and sweat and mammary glands. Also expressed in myoepithelium of prostate, basal layer of urinary bladder, cambial cells of sebaceous gland and in exocervix (at protein level)

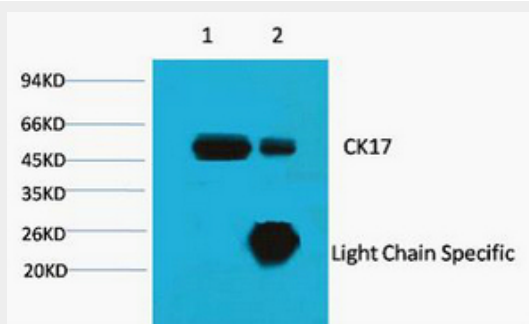
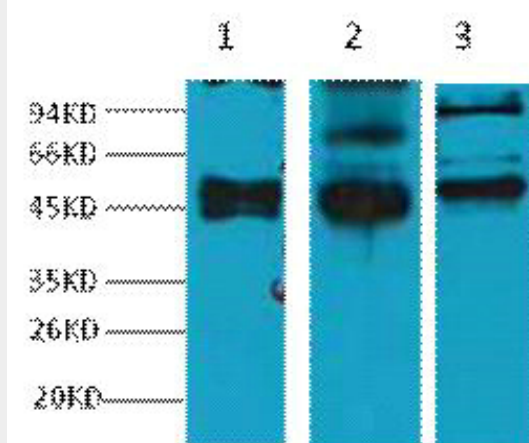
**CK17 Monoclonal Antibody(10A1) - Protocols**

Provided below are standard protocols that you may find useful for product applications.

- [Western Blot](#)
- [Blocking Peptides](#)
- [Dot Blot](#)
- [Immunohistochemistry](#)
- [Immunofluorescence](#)
- [Immunoprecipitation](#)
- [Flow Cytometry](#)
- [Cell Culture](#)

**CK17 Monoclonal Antibody(10A1) - Images**





### CK17 Monoclonal Antibody(10A1) - Background

Type I keratin involved in the formation and maintenance of various skin appendages, specifically in determining shape and orientation of hair (By similarity). Required for the correct growth of hair follicles, in particular for the persistence of the anagen (growth) state (By similarity). Modulates the function of TNF-alpha in the specific context of hair cycling. Regulates protein synthesis and epithelial cell growth through binding to the adapter protein SFN and by stimulating Akt/mTOR pathway (By similarity). Involved in tissue repair. May be a marker of basal cell differentiation in complex epithelia and therefore indicative of a certain type of epithelial "stem cells". Acts as a promoter of epithelial proliferation by acting a regulator of immune response in skin: promotes Th1/Th17-dominated immune environment contributing to the development of basaloid skin tumors (By similarity). May act as an autoantigen in the immunopathogenesis of psoriasis, with certain peptide regions being a major target for autoreactive T-cells and hence causing their proliferation.