

**CD25 Monoclonal Antibody(Q22)**  
Catalog # AP63361

**Specification**

---

**CD25 Monoclonal Antibody(Q22) - Product Information**

Application	IHC-P
Primary Accession	<a href="#">P01589</a>
Reactivity	Human
Host	Mouse
Clonality	Monoclonal

**CD25 Monoclonal Antibody(Q22) - Additional Information**

**Gene ID** 3559

**Other Names**

IL2RA; Interleukin-2 receptor subunit alpha; IL-2 receptor subunit alpha; IL-2-RA; IL-2R subunit alpha; IL2-RA; TAC antigen; p55; CD25

**Dilution**

IHC-P~~N/A

**Format**

PBS, pH 7.4, containing 0.09% (W/V) sodium azide as Preservative and 50% Glycerol.

**Storage Conditions**

-20°C

**CD25 Monoclonal Antibody(Q22) - Protein Information**

**Name** IL2RA

**Function**

Receptor for interleukin-2. The receptor is involved in the regulation of immune tolerance by controlling regulatory T cells (TREGs) activity. TREGs suppress the activation and expansion of autoreactive T-cells.

**Cellular Location**

Membrane; Single-pass type I membrane protein.

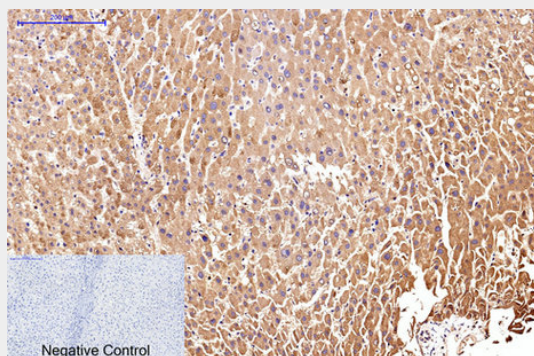
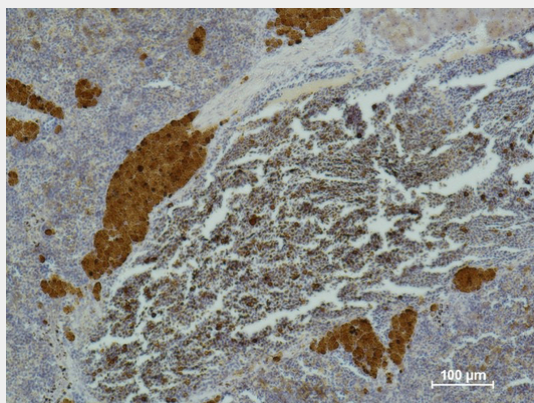
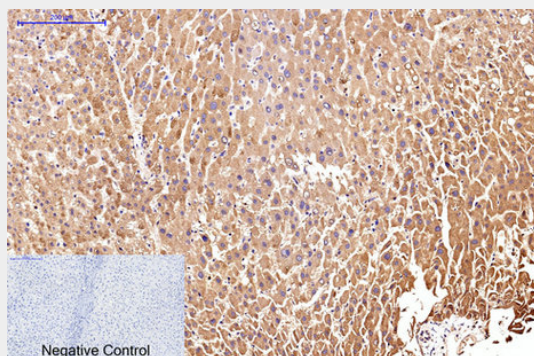
**CD25 Monoclonal Antibody(Q22) - Protocols**

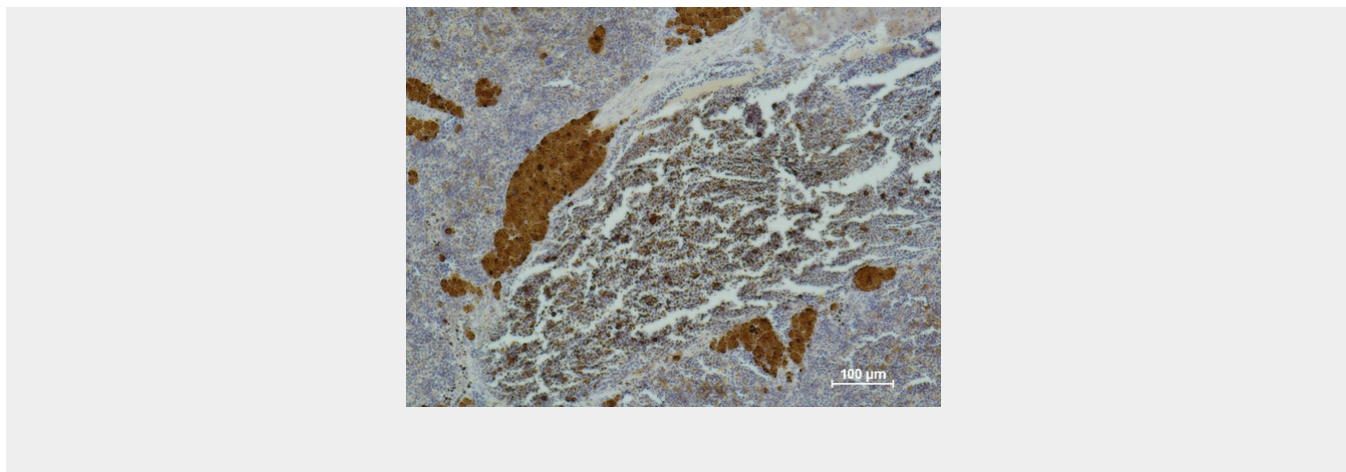
Provided below are standard protocols that you may find useful for product applications.

- [Western Blot](#)
- [Blocking Peptides](#)

- [Dot Blot](#)
- [Immunohistochemistry](#)
- [Immunofluorescence](#)
- [Immunoprecipitation](#)
- [Flow Cytometry](#)
- [Cell Culture](#)

### CD25 Monoclonal Antibody(Q22) - Images





### **CD25 Monoclonal Antibody(Q22) - Background**

Receptor for interleukin-2. The receptor is involved in the regulation of immune tolerance by controlling regulatory T cells (TREGs) activity. TREGs suppress the activation and expansion of autoreactive T-cells.