

MeCP2 Polyclonal Antibody
Catalog # AP63389**Specification**

MeCP2 Polyclonal Antibody - Product Information

Application	WB
Primary Accession	P51608
Reactivity	Human
Host	Rabbit
Clonality	Polyclonal

MeCP2 Polyclonal Antibody - Additional Information**Gene ID** 4204**Other Names**

Methyl-CpG-binding protein 2 (MeCp-2 protein) (MeCp2)

Dilution

WB~~WB: 1:2000

Format

PBS, pH 7.4, containing 0.09% (W/V) sodium azide as Preservative and 50% Glycerol.

Storage Conditions

-20°C

MeCP2 Polyclonal Antibody - Protein Information**Name** MECP2**Function**

Chromosomal protein that binds to methylated DNA. It can bind specifically to a single methyl-CpG pair. It is not influenced by sequences flanking the methyl-CpGs. Mediates transcriptional repression through interaction with histone deacetylase and the corepressor SIN3A. Binds both 5-methylcytosine (5mC) and 5-hydroxymethylcytosine (5hmC)- containing DNA, with a preference for 5-methylcytosine (5mC).

Cellular Location

Nucleus {ECO:0000250|UniProtKB:Q9Z2D6}. Note=Colocalized with methyl-CpG in the genome. Colocalized with TBL1X to the heterochromatin foci.

Tissue Location

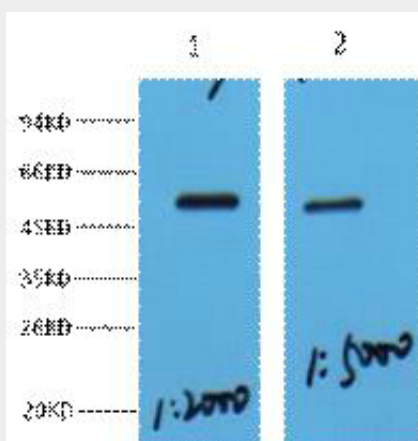
Present in all adult somatic tissues tested.

MeCP2 Polyclonal Antibody - Protocols

Provided below are standard protocols that you may find useful for product applications.

- [Western Blot](#)
- [Blocking Peptides](#)
- [Dot Blot](#)
- [Immunohistochemistry](#)
- [Immunofluorescence](#)
- [Immunoprecipitation](#)
- [Flow Cytometry](#)
- [Cell Culture](#)

MeCP2 Polyclonal Antibody - Images



MeCP2 Polyclonal Antibody - Background

Chromosomal protein that binds to methylated DNA. It can bind specifically to a single methyl-CpG pair. It is not influenced by sequences flanking the methyl-CpGs. Mediates transcriptional repression through interaction with histone deacetylase and the corepressor SIN3A. Binds both 5-methylcytosine (5mC) and 5-hydroxymethylcytosine (5hmC)-containing DNA, with a preference for 5-methylcytosine (5mC).