

PR Monoclonal Antibody(Z15)
Catalog # AP63493**Specification**

PR Monoclonal Antibody(Z15) - Product Information

Application	IHC-P, IF
Primary Accession	P06401
Reactivity	Human, Mouse, Rat
Host	Mouse
Clonality	Monoclonal

PR Monoclonal Antibody(Z15) - Additional Information**Gene ID** 5241**Other Names**

PGR; NR3C3; Progesterone receptor; PR; Nuclear receptor subfamily 3 group C member 3

Dilution

IHC-P~~N/A

IF~~IHC: 1:200 IF: 1:100-200

Format

PBS, pH 7.4, containing 0.09% (W/V) sodium azide as Preservative and 50% Glycerol.

Storage Conditions

-20°C

PR Monoclonal Antibody(Z15) - Protein Information**Name** PGR**Synonyms** NR3C3**Function**

The steroid hormones and their receptors are involved in the regulation of eukaryotic gene expression and affect cellular proliferation and differentiation in target tissues. Depending on the isoform, progesterone receptor functions as a transcriptional activator or repressor.

Cellular Location

Nucleus. Cytoplasm. Note=Nucleoplasmic shuttling is both hormone- and cell cycle-dependent. On hormone stimulation, retained in the cytoplasm in the G(1) and G(2)/M phases [Isoform 4]: Mitochondrion outer membrane

Tissue Location

In reproductive tissues the expression of isoform A and isoform B varies as a consequence of developmental and hormonal status. Isoform A and isoform B are expressed in comparable levels in uterine glandular epithelium during the proliferative phase of the menstrual cycle. Expression of

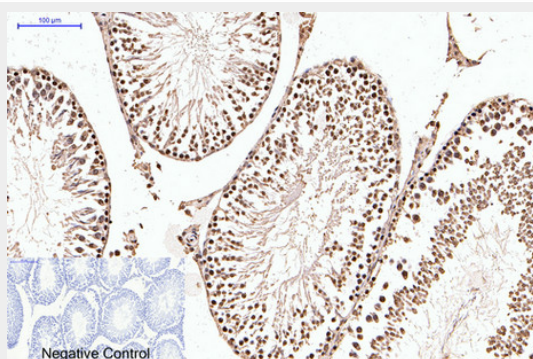
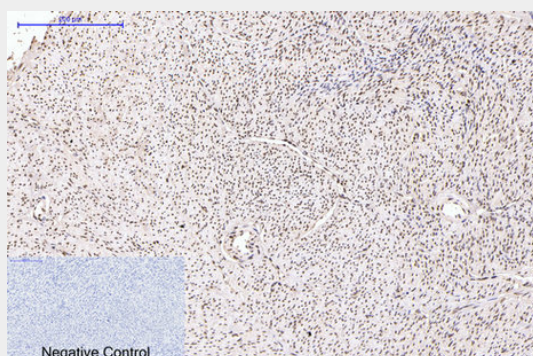
isoform B but not of isoform A persists in the glands during mid-secretory phase. In the stroma, isoform A is the predominant form throughout the cycle. Heterogeneous isoform expression between the glands of the endometrium basalis and functionalis is implying region-specific responses to hormonal stimuli

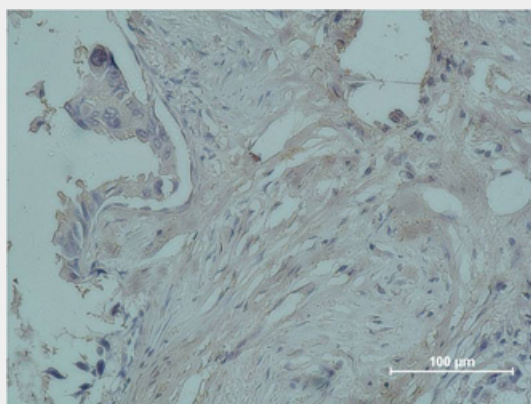
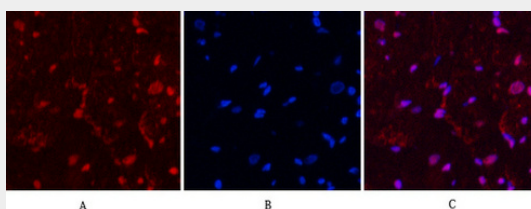
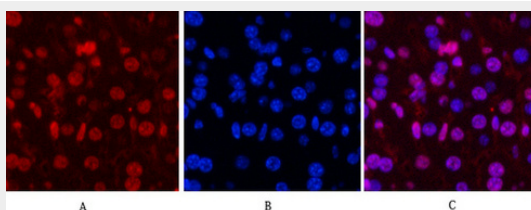
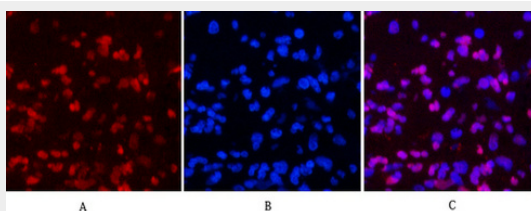
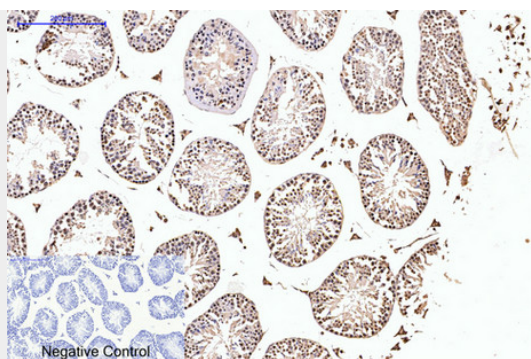
PR Monoclonal Antibody(Z15) - Protocols

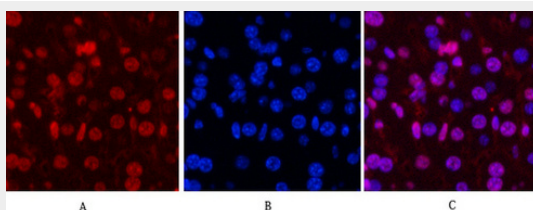
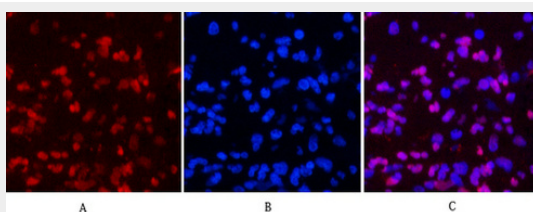
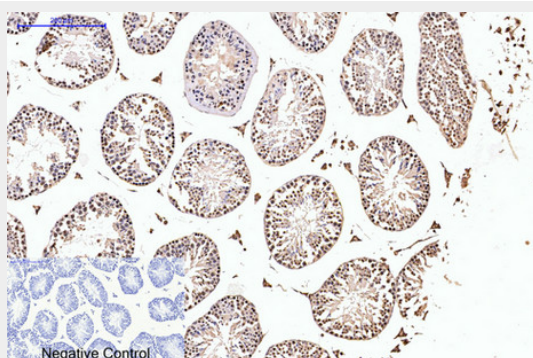
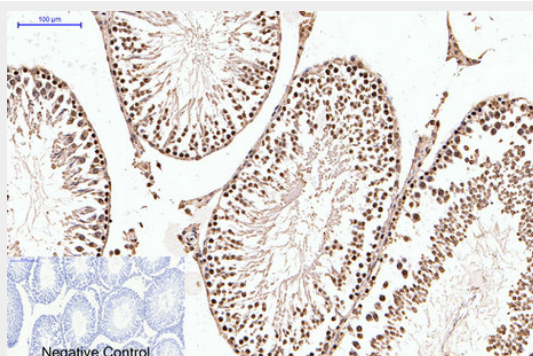
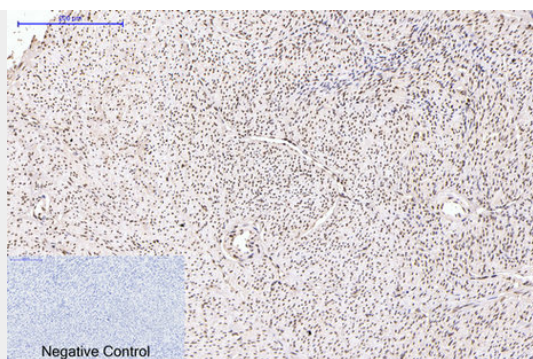
Provided below are standard protocols that you may find useful for product applications.

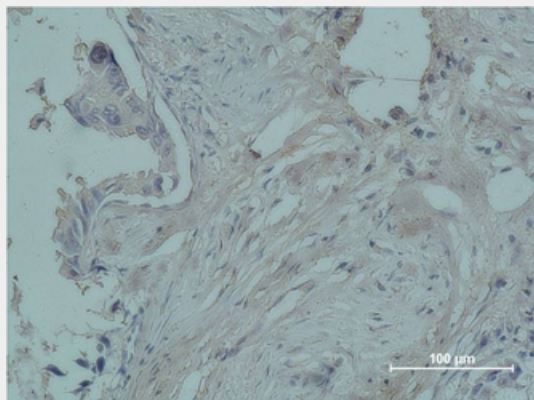
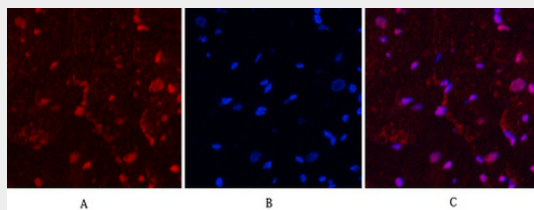
- [Western Blot](#)
- [Blocking Peptides](#)
- [Dot Blot](#)
- [Immunohistochemistry](#)
- [Immunofluorescence](#)
- [Immunoprecipitation](#)
- [Flow Cytometry](#)
- [Cell Culture](#)

PR Monoclonal Antibody(Z15) - Images









PR Monoclonal Antibody(Z15) - Background

The steroid hormones and their receptors are involved in the regulation of eukaryotic gene expression and affect cellular proliferation and differentiation in target tissues. Depending on the isoform, progesterone receptor functions as transcriptional activator or repressor.