

COX4 Polyclonal Antibody
Catalog # AP63496**Specification**

COX4 Polyclonal Antibody - Product Information

Application	WB, IHC-P
Primary Accession	P13073
Reactivity	Human, Mouse, Rat
Host	Rabbit
Clonality	Polyclonal

COX4 Polyclonal Antibody - Additional Information**Gene ID** 1327**Other Names**

COX4I1; COX4; Cytochrome c oxidase subunit 4 isoform 1, mitochondrial; Cytochrome c oxidase polypeptide IV; Cytochrome c oxidase subunit IV isoform 1; COX IV-1

Dilution

WB~~WB: 1:1000 IHC: 1:500-1000
IHC-P~~N/A

Format

PBS, pH 7.4, containing 0.09% (W/V) sodium azide as Preservative and 50% Glycerol.

Storage Conditions

-20°C

COX4 Polyclonal Antibody - Protein Information**Name** COX4I1 ([HGNC:2265](#))**Function**

Component of the cytochrome c oxidase, the last enzyme in the mitochondrial electron transport chain which drives oxidative phosphorylation. The respiratory chain contains 3 multisubunit complexes succinate dehydrogenase (complex II, CII), ubiquinol- cytochrome c oxidoreductase (cytochrome b-c1 complex, complex III, CIII) and cytochrome c oxidase (complex IV, CIV), that cooperate to transfer electrons derived from NADH and succinate to molecular oxygen, creating an electrochemical gradient over the inner membrane that drives transmembrane transport and the ATP synthase. Cytochrome c oxidase is the component of the respiratory chain that catalyzes the reduction of oxygen to water. Electrons originating from reduced cytochrome c in the intermembrane space (IMS) are transferred via the dinuclear copper A center (CU(A)) of subunit 2 and heme A of subunit 1 to the active site in subunit 1, a binuclear center (BNC) formed by heme A3 and copper B (CU(B)). The BNC reduces molecular oxygen to 2 water molecules using 4 electrons from cytochrome c in the IMS and 4 protons from the mitochondrial matrix.

Cellular Location

Mitochondrion inner membrane; Single-pass membrane protein

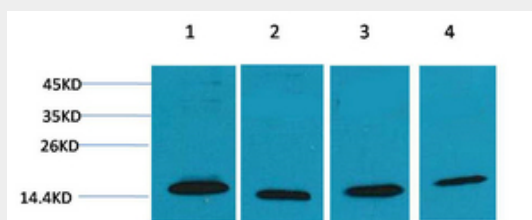
Tissue Location

Ubiquitous.

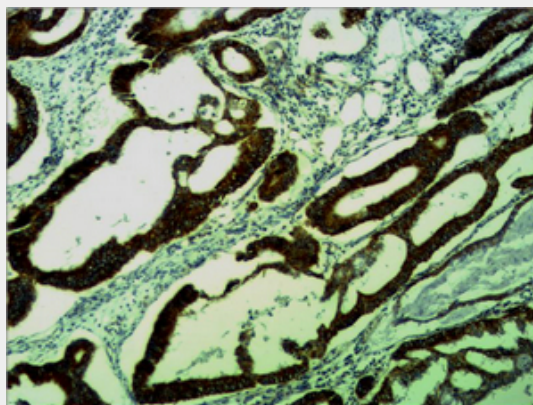
COX4 Polyclonal Antibody - Protocols

Provided below are standard protocols that you may find useful for product applications.

- [Western Blot](#)
- [Blocking Peptides](#)
- [Dot Blot](#)
- [Immunohistochemistry](#)
- [Immunofluorescence](#)
- [Immunoprecipitation](#)
- [Flow Cytometry](#)
- [Cell Culture](#)

COX4 Polyclonal Antibody - Images

Western blot analysis of 1) Hela, 2) 3T3, 3) Mouse Brain, 4) Rat Brain using COX4 Polyclonal Antibody.. Secondary antibody was diluted at 1:20000



Immunohistochemical analysis of paraffin-embedded human Colon carcinoma using COX4 Polyclonal Antibody.

COX4 Polyclonal Antibody - Background

This protein is one of the nuclear-coded polypeptide chains of cytochrome c oxidase, the terminal oxidase in mitochondrial electron transport.