

**HSP60 Polyclonal Antibody**  
**Catalog # AP63502****Specification**

---

**HSP60 Polyclonal Antibody - Product Information**

Application	WB, IHC-P
Primary Accession	<a href="#">P10809</a>
Reactivity	Human, Mouse, Rat
Host	Rabbit
Clonality	Polyclonal

**HSP60 Polyclonal Antibody - Additional Information****Gene ID** 3329**Other Names**

HSPD1; HSP60; 60 kDa heat shock protein, mitochondrial; 60 kDa chaperonin; Chaperonin 60; CPN60; Heat shock protein 60; HSP-60; Hsp60; HuCHA60; Mitochondrial matrix protein P1; P60 lymphocyte protein

**Dilution**

WB~~WB: 1:1000-2000 IHC: 1:200-500  
IHC-P~~N/A

**Format**

PBS, pH 7.4, containing 0.09% (W/V) sodium azide as Preservative and 50% Glycerol.

**Storage Conditions**

-20°C

**HSP60 Polyclonal Antibody - Protein Information****Name** HSPD1**Synonyms** HSP60**Function**

Chaperonin implicated in mitochondrial protein import and macromolecular assembly. Together with Hsp10, facilitates the correct folding of imported proteins. May also prevent misfolding and promote the refolding and proper assembly of unfolded polypeptides generated under stress conditions in the mitochondrial matrix (PubMed:<a href="http://www.uniprot.org/citations/11422376" target="\_blank">11422376</a>, PubMed:<a href="http://www.uniprot.org/citations/1346131" target="\_blank">1346131</a>). The functional units of these chaperonins consist of heptameric rings of the large subunit Hsp60, which function as a back- to-back double ring. In a cyclic reaction, Hsp60 ring complexes bind one unfolded substrate protein per ring, followed by the binding of ATP and association with 2 heptameric rings of the co-chaperonin Hsp10. This leads to sequestration of the substrate protein in the inner cavity of Hsp60 where, for a certain period of time, it can fold undisturbed by other cell components.

Synchronous hydrolysis of ATP in all Hsp60 subunits results in the dissociation of the chaperonin rings and the release of ADP and the folded substrate protein (Probable).

#### Cellular Location

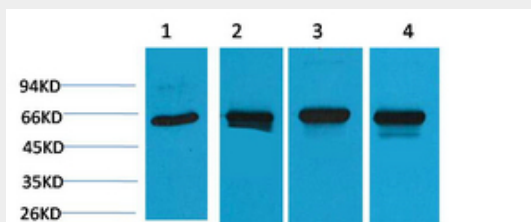
Mitochondrion matrix.

### HSP60 Polyclonal Antibody - Protocols

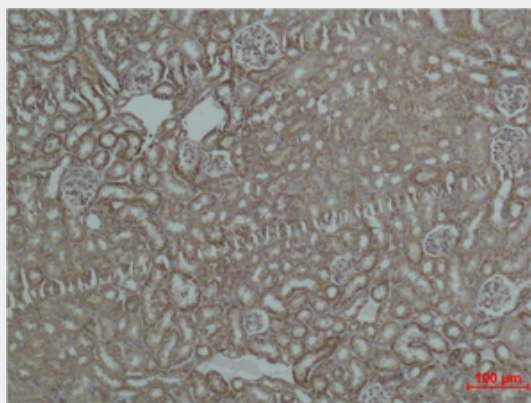
Provided below are standard protocols that you may find useful for product applications.

- [Western Blot](#)
- [Blocking Peptides](#)
- [Dot Blot](#)
- [Immunohistochemistry](#)
- [Immunofluorescence](#)
- [Immunoprecipitation](#)
- [Flow Cytometry](#)
- [Cell Culture](#)

### HSP60 Polyclonal Antibody - Images



Western blot analysis of 1) Hela, 2) 3T3, 3) Mouse Brain, 4) Rat Brain using HSP60 Polyclonal Antibody.. Secondary antibody was diluted at 1:20000



Immunohistochemical analysis of paraffin-embedded Mouse Kidney Tissue using HSP60 Polyclonal Antibody.

### HSP60 Polyclonal Antibody - Background

Chaperonin implicated in mitochondrial protein import and macromolecular assembly. Together with Hsp10, facilitates the correct folding of imported proteins. May also prevent misfolding and promote the refolding and proper assembly of unfolded polypeptides generated under stress conditions in the mitochondrial matrix (PubMed:1346131, PubMed:11422376). The functional units of these chaperonins consist of heptameric rings of the large subunit Hsp60, which function as a

back-to-back double ring. In a cyclic reaction, Hsp60 ring complexes bind one unfolded substrate protein per ring, followed by the binding of ATP and association with 2 heptameric rings of the co-chaperonin Hsp10. This leads to sequestration of the substrate protein in the inner cavity of Hsp60 where, for a certain period of time, it can fold undisturbed by other cell components. Synchronous hydrolysis of ATP in all Hsp60 subunits results in the dissociation of the chaperonin rings and the release of ADP and the folded substrate protein (Probable).