

ERK 5 Polyclonal Antibody
Catalog # AP63512**Specification**

ERK 5 Polyclonal Antibody - Product Information

Application	WB, IHC-P
Primary Accession	Q13164
Reactivity	Human, Mouse, Rat
Host	Rabbit
Clonality	Polyclonal

ERK 5 Polyclonal Antibody - Additional Information**Gene ID** 5598**Other Names**

MAPK7; BMK1; ERK5; PRKM7; Mitogen-activated protein kinase 7; MAP kinase 7; MAPK 7; Big MAP kinase 1; BMK-1; Extracellular signal-regulated kinase 5; ERK-5

Dilution

WB~~WB: 1:1000-2000 IHC: 1:200-500

IHC-P~~N/A

Format

PBS, pH 7.4, containing 0.09% (W/V) sodium azide as Preservative and 50% Glycerol.

Storage Conditions

-20°C

ERK 5 Polyclonal Antibody - Protein Information**Name** MAPK7**Synonyms** BMK1, ERK5, PRKM7**Function**

Plays a role in various cellular processes such as proliferation, differentiation and cell survival. The upstream activator of MAPK7 is the MAPK kinase MAP2K5. Upon activation, it translocates to the nucleus and phosphorylates various downstream targets including MEF2C. EGF activates MAPK7 through a Ras-independent and MAP2K5-dependent pathway. As part of the MAPK/ERK signaling pathway, acts as a negative regulator of apoptosis in cardiomyocytes via interaction with STUB1/CHIP and promotion of STUB1-mediated ubiquitination and degradation of ICER-type isoforms of CREM (By similarity). May have a role in muscle cell differentiation. May be important for endothelial function and maintenance of blood vessel integrity. MAP2K5 and MAPK7 interact specifically with one another and not with MEK1/ERK1 or MEK2/ERK2 pathways. Phosphorylates SGK1 at Ser-78 and this is required for growth factor-induced cell cycle progression. Involved in the regulation of p53/TP53 by disrupting the PML-MDM2 interaction.

Cellular Location

Cytoplasm. Nucleus. Nucleus, PML body. Note=Translocates to the nucleus upon activation

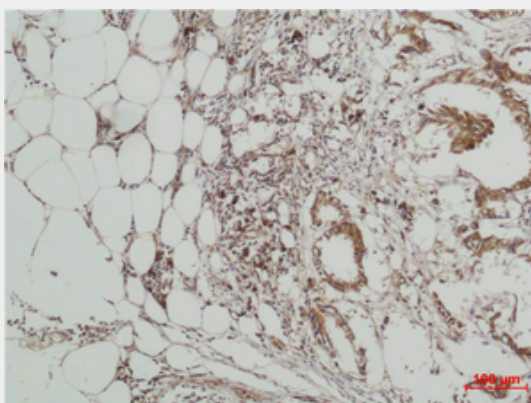
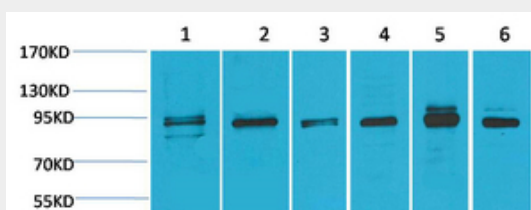
Tissue Location

Expressed in many adult tissues. Abundant in heart, placenta, lung, kidney and skeletal muscle.
Not detectable in liver

ERK 5 Polyclonal Antibody - Protocols

Provided below are standard protocols that you may find useful for product applications.

- [Western Blot](#)
- [Blocking Peptides](#)
- [Dot Blot](#)
- [Immunohistochemistry](#)
- [Immunofluorescence](#)
- [Immunoprecipitation](#)
- [Flow Cytometry](#)
- [Cell Culture](#)

ERK 5 Polyclonal Antibody - Images**ERK 5 Polyclonal Antibody - Background**

Plays a role in various cellular processes such as proliferation, differentiation and cell survival. The upstream activator of MAPK7 is the MAPK kinase MAP2K5. Upon activation, it translocates to the nucleus and phosphorylates various downstream targets including MEF2C. EGF activates MAPK7 through a Ras- independent and MAP2K5-dependent pathway. May have a role in muscle cell differentiation. May be important for endothelial function and maintenance of blood vessel integrity. MAP2K5 and MAPK7 interact specifically with one another and not with MEK1/ERK1 or MEK2/ERK2

pathways. Phosphorylates SGK1 at Ser-78 and this is required for growth factor-induced cell cycle progression. Involved in the regulation of p53/TP53 by disrupting the PML-MDM2 interaction.