

**TLR1 Polyclonal Antibody**  
**Catalog # AP63530****Specification**

---

**TLR1 Polyclonal Antibody - Product Information**

Application	IHC-P
Primary Accession	<a href="#">Q15399</a>
Reactivity	Human, Mouse, Rat
Host	Rabbit
Clonality	Polyclonal

**TLR1 Polyclonal Antibody - Additional Information****Gene ID** 7096**Other Names**

TLR1; KIAA0012; Toll-like receptor 1; Toll/interleukin-1 receptor-like protein; TIL; CD281

**Dilution**

IHC-P~~N/A

**Format**

PBS, pH 7.4, containing 0.09% (W/V) sodium azide as Preservative and 50% Glycerol.

**Storage Conditions**

-20°C

**TLR1 Polyclonal Antibody - Protein Information****Name** TLR1**Synonyms** KIAA0012**Function**

Participates in the innate immune response to microbial agents. Specifically recognizes diacylated and triacylated lipopeptides. Cooperates with TLR2 to mediate the innate immune response to bacterial lipoproteins or lipopeptides (PubMed:<a href="http://www.uniprot.org/citations/21078852" target="\_blank">21078852</a>). Forms the activation cluster TLR2:TLR1:CD14 in response to triacylated lipopeptides, this cluster triggers signaling from the cell surface and subsequently is targeted to the Golgi in a lipid-raft dependent pathway (PubMed:<a href="http://www.uniprot.org/citations/16880211" target="\_blank">16880211</a>). Acts via MYD88 and TRAF6, leading to NF-kappa-B activation, cytokine secretion and the inflammatory response.

**Cellular Location**

Cell membrane; Single-pass type I membrane protein. Cytoplasmic vesicle, phagosome membrane {ECO:0000250|UniProtKB:Q9EPQ1}; Single-pass type I membrane protein. Membrane raft. Golgi apparatus. Note=Does not reside in lipid rafts before stimulation but accumulates increasingly in

the raft upon the presence of the microbial ligand. In response to triacylated lipoproteins, TLR2:TLR1 heterodimers are recruited in lipid rafts, this recruitment determine the intracellular targeting to the Golgi apparatus.

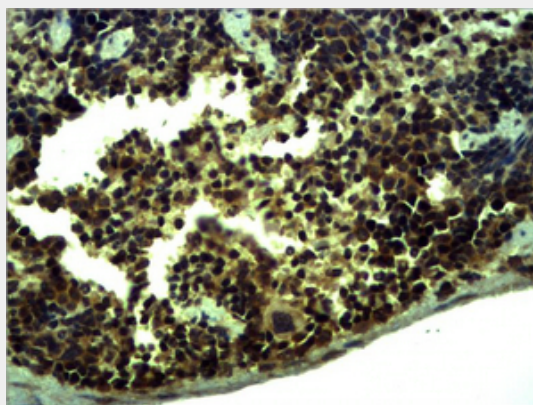
**Tissue Location**

Ubiquitous. Highly expressed in spleen, ovary, peripheral blood leukocytes, thymus and small intestine

**TLR1 Polyclonal Antibody - Protocols**

Provided below are standard protocols that you may find useful for product applications.

- [Western Blot](#)
- [Blocking Peptides](#)
- [Dot Blot](#)
- [Immunohistochemistry](#)
- [Immunofluorescence](#)
- [Immunoprecipitation](#)
- [Flow Cytometry](#)
- [Cell Culture](#)

**TLR1 Polyclonal Antibody - Images****TLR1 Polyclonal Antibody - Background**

Participates in the innate immune response to microbial agents. Specifically recognizes diacylated and triacylated lipopeptides. Cooperates with TLR2 to mediate the innate immune response to bacterial lipoproteins or lipopeptides (PubMed:21078852). Forms the activation cluster TLR2:TLR1:CD14 in response to triacylated lipopeptides, this cluster triggers signaling from the cell surface and subsequently is targeted to the Golgi in a lipid-raft dependent pathway (PubMed:16880211). Acts via MYD88 and TRAF6, leading to NF-kappa-B activation, cytokine secretion and the inflammatory response.