

HSP27 Monoclonal Antibody(Mix-mA)
Catalog # AP63604**Specification**

HSP27 Monoclonal Antibody(Mix-mA) - Product Information

| | |
|-------------------|------------------------|
| Application | WB, IHC-P |
| Primary Accession | P04792 |
| Reactivity | Human |
| Host | Mouse |
| Clonality | Monoclonal |

HSP27 Monoclonal Antibody(Mix-mA) - Additional Information**Gene ID** 3315**Other Names**

Heat shock protein beta-1 (HspB1) (28 kDa heat shock protein) (Estrogen-regulated 24 kDa protein) (Heat shock 27 kDa protein) (HSP 27) (Stress-responsive protein 27) (SRP27)

Dilution

WB~~WB: 1:1000-1:3000 IHC: 1:50-1:200
IHC-P~~N/A

Format

Liquid in PBS containing 50% glycerol, 0.5% BSA and 0.09% (W/V) sodium azide.

Storage Conditions

-20°C

HSP27 Monoclonal Antibody(Mix-mA) - Protein Information**Name** HSPB1**Synonyms** HSP27, HSP28**Function**

Small heat shock protein which functions as a molecular chaperone probably maintaining denatured proteins in a folding- competent state (PubMed:10383393, PubMed:20178975). Plays a role in stress resistance and actin organization (PubMed:19166925). Through its molecular chaperone activity may regulate numerous biological processes including the phosphorylation and the axonal transport of neurofilament proteins (PubMed:23728742).

Cellular Location

Cytoplasm. Nucleus Cytoplasm, cytoskeleton, spindle Note=Cytoplasmic in interphase cells.

Colocalizes with mitotic spindles in mitotic cells. Translocates to the nucleus during heat shock and resides in sub-nuclear structures known as SC35 speckles or nuclear splicing speckles.

Tissue Location

Detected in all tissues tested: skeletal muscle, heart, aorta, large intestine, small intestine, stomach, esophagus, bladder, adrenal gland, thyroid, pancreas, testis, adipose tissue, kidney, liver, spleen, cerebral cortex, blood serum and cerebrospinal fluid. Highest levels are found in the heart and in tissues composed of striated and smooth muscle.

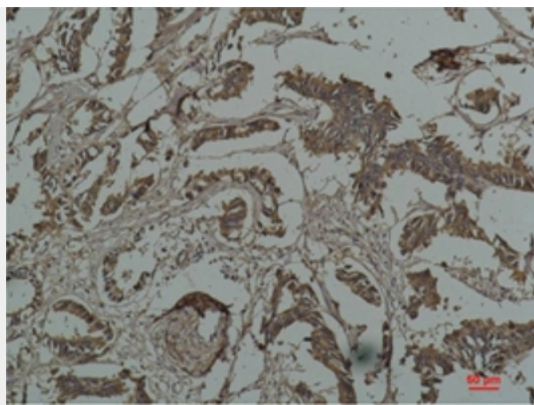
HSP27 Monoclonal Antibody(Mix-mA) - Protocols

Provided below are standard protocols that you may find useful for product applications.

- [Western Blot](#)
- [Blocking Peptides](#)
- [Dot Blot](#)
- [Immunohistochemistry](#)
- [Immunofluorescence](#)
- [Immunoprecipitation](#)
- [Flow Cytometry](#)
- [Cell Culture](#)

HSP27 Monoclonal Antibody(Mix-mA) - Images





HSP27 Monoclonal Antibody(Mix-mA) - Background

Small heat shock protein which functions as a molecular chaperone probably maintaining denatured proteins in a folding- competent state (PubMed:10383393, PubMed:20178975). Plays a role in stress resistance and actin organization (PubMed:19166925). Through its molecular chaperone activity may regulate numerous biological processes including the phosphorylation and the axonal transport of neurofilament proteins (PubMed:23728742).