

Flotillin-2 Polyclonal Antibody
Catalog # AP63618**Specification**

Flotillin-2 Polyclonal Antibody - Product Information

Application	WB, IHC-P
Primary Accession	Q14254
Reactivity	Human, Rat, Mouse
Host	Rabbit
Clonality	Polyclonal

Flotillin-2 Polyclonal Antibody - Additional Information**Gene ID** 2319**Other Names**

Flotillin-2 (Epidermal surface antigen) (ESA) (Membrane component chromosome 17 surface marker 1)

Dilution

WB~~Western Blot: 1/500 - 1/2000. Immunohistochemistry: 1/100 - 1/300. ELISA: 1/40000. Not yet tested in other applications.

IHC-P~~N/A

Format

Liquid in PBS containing 50% glycerol, 0.5% BSA and 0.09% (W/V) sodium azide.

Storage Conditions

-20°C

Flotillin-2 Polyclonal Antibody - Protein Information**Name** FLOT2**Synonyms** ESA1, M17S1**Function**

May act as a scaffolding protein within caveolar membranes, functionally participating in formation of caveolae or caveolae-like vesicles. May be involved in epidermal cell adhesion and epidermal structure and function.

Cellular Location

Cell membrane; Peripheral membrane protein. Membrane, caveola; Peripheral membrane protein. Endosome Membrane; Lipid-anchor. Note=Membrane-associated protein of caveolae

Tissue Location

In skin, expressed in epidermis and epidermal appendages but not in dermis. Expressed in all layers of the epidermis except the basal layer. In hair follicles, expressed in the suprabasal layer

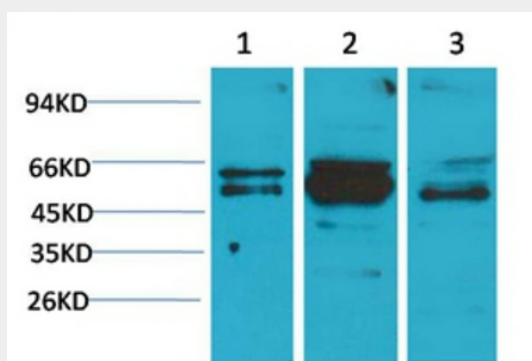
but not the basal layer. Also expressed in melanoma and carcinoma cell lines, fibroblasts and foreskin melanocytes

Flotillin-2 Polyclonal Antibody - Protocols

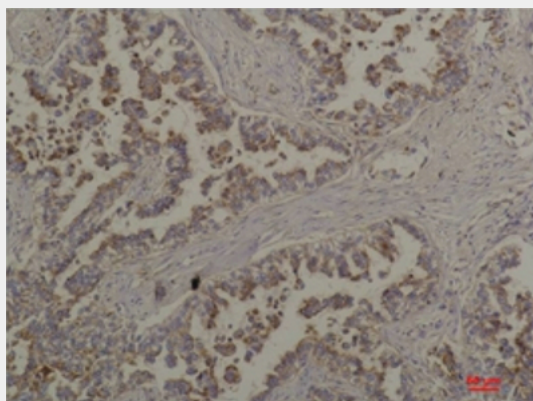
Provided below are standard protocols that you may find useful for product applications.

- [Western Blot](#)
- [Blocking Peptides](#)
- [Dot Blot](#)
- [Immunohistochemistry](#)
- [Immunofluorescence](#)
- [Immunoprecipitation](#)
- [Flow Cytometry](#)
- [Cell Culture](#)

Flotillin-2 Polyclonal Antibody - Images



Western blot analysis of 1) A431, 2) Mouse Brain Tissue, 3) Rat Brain Tissue with Flotillin-2 Rabbit pAb diluted at 1:2,000.



Immunohistochemical analysis of paraffin-embedded Human Lung Carcinoma using Flotillin-2 Rabbit pAb diluted at 1:200

Flotillin-2 Polyclonal Antibody - Background

May act as a scaffolding protein within caveolar membranes, functionally participating in formation of caveolae or caveolae-like vesicles. May be involved in epidermal cell adhesion and epidermal structure and function.