

Cyclophilin B Monoclonal Antibody(2B10)
Catalog # AP63641**Specification**

Cyclophilin B Monoclonal Antibody(2B10) - Product Information

Application	WB, IHC-P, IF
Primary Accession	P23284
Reactivity	Human, Rat, Mouse
Host	Mouse
Clonality	Monoclonal

Cyclophilin B Monoclonal Antibody(2B10) - Additional Information**Gene ID** 5479**Other Names**

PPIB; CYPB; Peptidyl-prolyl cis-trans isomerase B; PPlase B; CYP-S1; Cyclophilin B; Rotamase B; S-cyclophilin; SCYLP

DilutionWB~~IF: 1:50-200 WB 1:1000-2000 IHC 1:50-300
IHC-P~~N/A
IF~~IF: 1:50-200 WB 1:1000-2000 IHC 1:50-300**Format**

Liquid in PBS containing 50% glycerol, 0.5% BSA and 0.09% (W/V) sodium azide.

Storage Conditions

-20°C

Cyclophilin B Monoclonal Antibody(2B10) - Protein Information**Name** PPIB**Synonyms** CYPB**Function**

PPlase that catalyzes the cis-trans isomerization of proline imidic peptide bonds in oligopeptides and may therefore assist protein folding.

Cellular Location

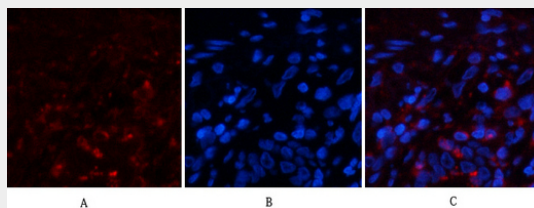
Virion. Note=(Microbial infection)

Cyclophilin B Monoclonal Antibody(2B10) - Protocols

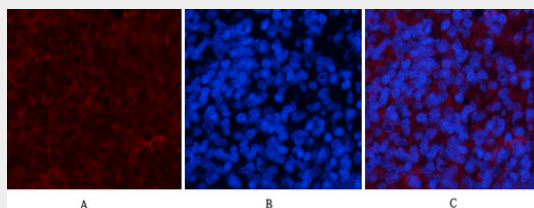
Provided below are standard protocols that you may find useful for product applications.

- [Western Blot](#)
- [Blocking Peptides](#)
- [Dot Blot](#)
- [Immunohistochemistry](#)
- [Immunofluorescence](#)
- [Immunoprecipitation](#)
- [Flow Cytometry](#)
- [Cell Culture](#)

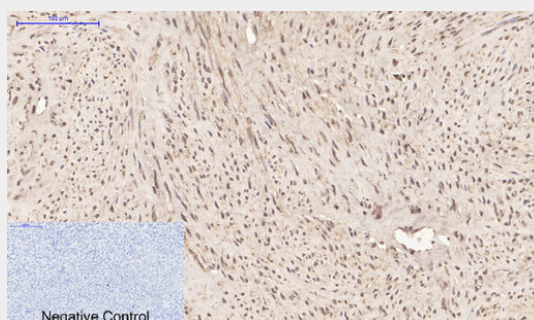
Cyclophilin B Monoclonal Antibody(2B10) - Images



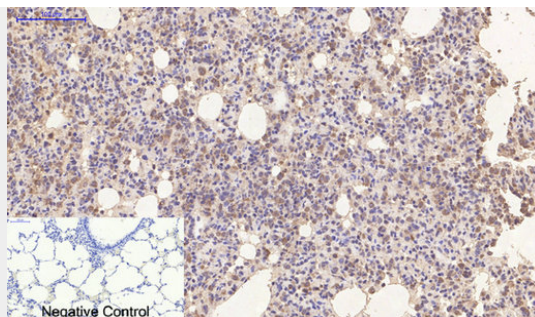
Immunofluorescence analysis of human-lung tissue. 1, Cyclophilin B Monoclonal Antibody(2B10)(red) was diluted at 1:200(4°C, overnight). 2, Cy3 labeled Secondary antibody was diluted at 1:300(room temperature, 50min). 3, Picture B: DAPI(blue) 10min. Picture A: Target. Picture B: DAPI. Picture C: merge of A+B



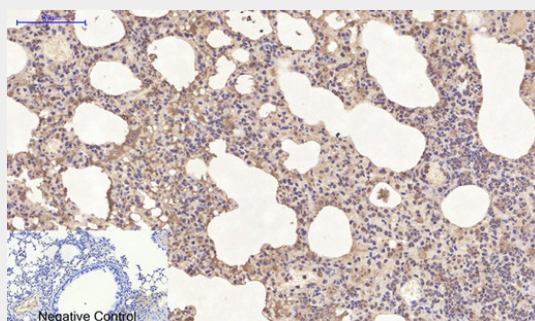
Immunofluorescence analysis of rat-spleen tissue. 1, Cyclophilin B Monoclonal Antibody(2B10)(red) was diluted at 1:200(4°C, overnight). 2, Cy3 labeled Secondary antibody was diluted at 1:300(room temperature, 50min). 3, Picture B: DAPI(blue) 10min. Picture A: Target. Picture B: DAPI. Picture C: merge of A+B



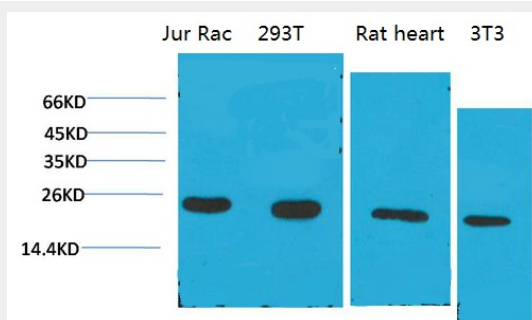
Immunohistochemical analysis of paraffin-embedded Human-uterus tissue. 1, Cyclophilin B Monoclonal Antibody(2B10) was diluted at 1:200(4°C, overnight). 2, Sodium citrate pH 6.0 was used for antibody retrieval(>98°C, 20min). 3, Secondary antibody was diluted at 1:200(room temperature, 30min). Negative control was used by secondary antibody only.



Immunohistochemical analysis of paraffin-embedded Rat-lung tissue. 1, Cyclophilin B Monoclonal Antibody(2B10) was diluted at 1:200(4°C, overnight). 2, Sodium citrate pH 6.0 was used for antibody retrieval(>98°C, 20min). 3, Secondary antibody was diluted at 1:200(room temperature, 30min). Negative control was used by secondary antibody only.



Immunohistochemical analysis of paraffin-embedded Mouse-lung tissue. 1, Cyclophilin B Monoclonal Antibody(2B10) was diluted at 1:200(4°C, overnight). 2, Sodium citrate pH 6.0 was used for antibody retrieval(>98°C, 20min). 3, Secondary antibody was diluted at 1:200(room temperature, 30min). Negative control was used by secondary antibody only.



Western blot analysis of 1) Jurkat, 2) 293T, 3) Rat Liver Tissue, 4) 3T3 with Cyclophilin B Mouse mAb diluted at 1:2,000.

Cyclophilin B Monoclonal Antibody(2B10) - Background

PPIase that catalyzes the cis-trans isomerization of proline imidic peptide bonds in oligopeptides and may therefore assist protein folding.