

GALR2 Polyclonal Antibody
Catalog # AP63684**Specification**

GALR2 Polyclonal Antibody - Product Information

Application	WB
Primary Accession	O43603
Reactivity	Human, Rat, Mouse
Host	Rabbit
Clonality	Polyclonal

GALR2 Polyclonal Antibody - Additional Information**Gene ID** 8811**Other Names**

GALR2; GALNR2; Galanin receptor type 2; GAL2-R; GALR-2

Dilution

WB~~WB 1:500-1000

Format

Liquid in PBS containing 50% glycerol, 0.5% BSA and 0.09% (W/V) sodium azide.

Storage Conditions

-20°C

GALR2 Polyclonal Antibody - Protein Information**Name** GALR2**Synonyms** GALNR2**Function**

Receptor for the hormone galanin and GALP. Receptor for the hormone spexin-1 (PubMed:24517231). The activity of this receptor is mediated by G proteins that activate the phospholipase C/protein kinase C pathway (via G(q)) and that inhibit adenylyl cyclase (via G(i)).

Cellular Location

Cell membrane; Multi-pass membrane protein.

Tissue Location

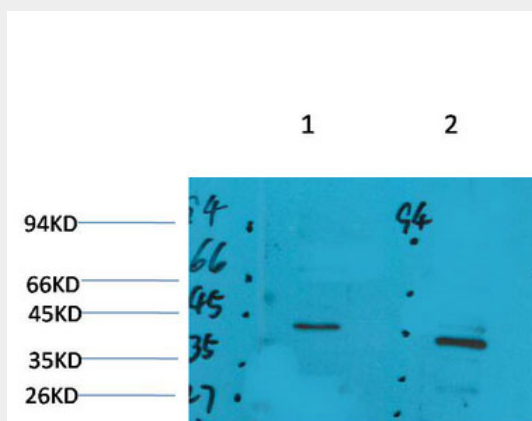
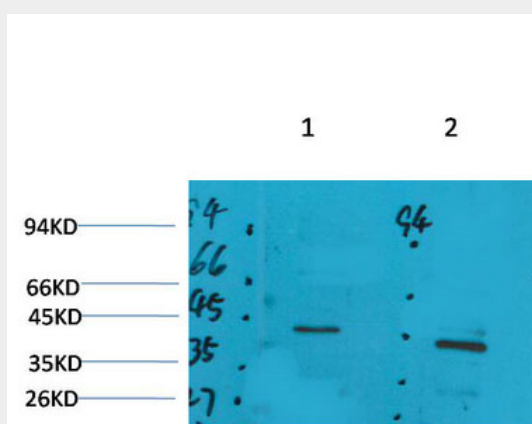
Expressed abundantly within the central nervous system in both hypothalamus and hippocampus. In peripheral tissues, the strongest expression was observed in heart, kidney, liver, and small intestine

GALR2 Polyclonal Antibody - Protocols

Provided below are standard protocols that you may find useful for product applications.

- [Western Blot](#)
- [Blocking Peptides](#)
- [Dot Blot](#)
- [Immunohistochemistry](#)
- [Immunofluorescence](#)
- [Immunoprecipitation](#)
- [Flow Cytometry](#)
- [Cell Culture](#)

GALR2 Polyclonal Antibody - Images



GALR2 Polyclonal Antibody - Background

Receptor for the hormone galanin and GALP. Receptor for the hormone spexin-1 (PubMed:24517231). The activity of this receptor is mediated by G proteins that activate the phospholipase C/protein kinase C pathway (via G(q)) and that inhibit adenylyl cyclase (via G(i)).