

**Cystatin C mouse Monoclonal Antibody(3C6)**  
**Catalog # AP63748****Specification**

---

**Cystatin C mouse Monoclonal Antibody(3C6) - Product Information**

Application	WB
Primary Accession	<a href="#">P01034</a>
Reactivity	Human
Host	Mouse
Clonality	Monoclonal

**Cystatin C mouse Monoclonal Antibody(3C6) - Additional Information****Gene ID** 1471**Other Names**  
CST3**Dilution**

WB~~Western Blot: 1/500 - 1/2000. ELISA: 1/20000. Not yet tested in other applications.

**Format**

Liquid in PBS containing 50% glycerol, 0.5% BSA and 0.09% (W/V) sodium azide.

**Storage Conditions**

-20°C

**Cystatin C mouse Monoclonal Antibody(3C6) - Protein Information****Name** CST3**Function**

As an inhibitor of cysteine proteinases, this protein is thought to serve an important physiological role as a local regulator of this enzyme activity.

**Cellular Location**

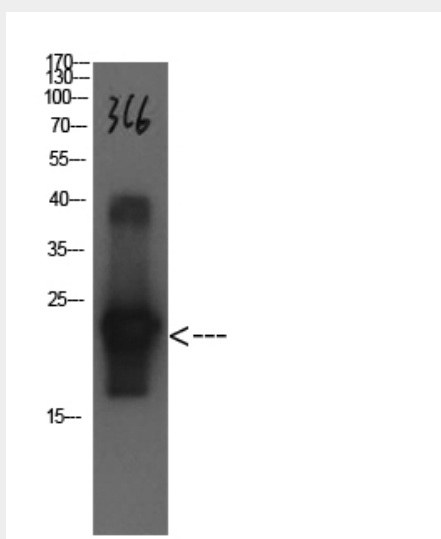
Secreted.

**Tissue Location**Expressed in submandibular and sublingual saliva but not in parotid saliva (at protein level).  
Expressed in various body fluids, such as the cerebrospinal fluid and plasma. Expressed in highest levels in the epididymis, vas deferens, brain, thymus, and ovary and the lowest in the submandibular gland**Cystatin C mouse Monoclonal Antibody(3C6) - Protocols**

Provided below are standard protocols that you may find useful for product applications.

- [Western Blot](#)
- [Blocking Peptides](#)
- [Dot Blot](#)
- [Immunohistochemistry](#)
- [Immunofluorescence](#)
- [Immunoprecipitation](#)
- [Flow Cytometry](#)
- [Cell Culture](#)

#### **Cystatin C mouse Monoclonal Antibody(3C6) - Images**



#### **Cystatin C mouse Monoclonal Antibody(3C6) - Background**

As an inhibitor of cysteine proteinases, this protein is thought to serve an important physiological role as a local regulator of this enzyme activity.