

Glypican 6 (GPC6) Antibody (N-term)
Purified Rabbit Polyclonal Antibody (Pab)
Catalog # AP6374a**Specification**

Glypican 6 (GPC6) Antibody (N-term) - Product Information

Application	WB,E
Primary Accession	O9Y625
Reactivity	Human
Host	Rabbit
Clonality	Polyclonal
Isotype	Rabbit IgG
Antigen Region	24-46

Glypican 6 (GPC6) Antibody (N-term) - Additional Information**Gene ID** 10082**Other Names**

Glypican-6, Secreted glypican-6, GPC6

Target/Specificity

This Glypican 6 (GPC6) antibody is generated from rabbits immunized with a KLH conjugated synthetic peptide between 24-46 amino acids from the N-terminal region of human Glypican 6 (GPC6).

Dilution

WB~~1:1000

E~~Use at an assay dependent concentration.

Format

Purified polyclonal antibody supplied in PBS with 0.09% (W/V) sodium azide. This antibody is prepared by Saturated Ammonium Sulfate (SAS) precipitation followed by dialysis against PBS.

Storage

Maintain refrigerated at 2-8°C for up to 2 weeks. For long term storage store at -20°C in small aliquots to prevent freeze-thaw cycles.

Precautions

Glypican 6 (GPC6) Antibody (N-term) is for research use only and not for use in diagnostic or therapeutic procedures.

Glypican 6 (GPC6) Antibody (N-term) - Protein Information**Name** GPC6

Function Cell surface proteoglycan that bears heparan sulfate. Putative cell surface coreceptor for growth factors, extracellular matrix proteins, proteases and anti-proteases (By similarity).

Enhances migration and invasion of cancer cells through WNT5A signaling.

Cellular Location

Cell membrane; Lipid-anchor, GPI- anchor; Extracellular side

Tissue Location

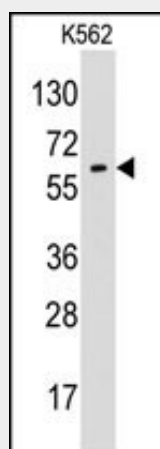
Widely expressed. High expression in fetal kidney and lung and lower expressions in fetal liver and brain. In adult tissues, very abundant in ovary, high levels also observed in liver, kidney, small intestine and colon. Not detected in peripheral blood leukocytes. Detected in breast cancer cells (at protein level)

Glypican 6 (GPC6) Antibody (N-term) - Protocols

Provided below are standard protocols that you may find useful for product applications.

- [Western Blot](#)
- [Blocking Peptides](#)
- [Dot Blot](#)
- [Immunohistochemistry](#)
- [Immunofluorescence](#)
- [Immunoprecipitation](#)
- [Flow Cytometry](#)
- [Cell Culture](#)

Glypican 6 (GPC6) Antibody (N-term) - Images



Western blot analysis of anti-GPC6 Pab (Cat.#AP6374a) in K562 cell line lysates (35ug/lane). GPC6 (arrow) was detected using the purified Pab.

Glypican 6 (GPC6) Antibody (N-term) - Background

The glypicans comprise a family of glycosylphosphatidylinositol-anchored heparan sulfate proteoglycans. The glypicans have been implicated in the control of cell growth and division. Glypican 6 is a putative cell surface coreceptor for growth factors, extracellular matrix proteins, proteases and anti-proteases.

Glypican 6 (GPC6) Antibody (N-term) - References

Veugelers, M., J. Biol. Chem. 274 (38), 26968-26977 (1999)
Paine-Saunders, S., Genomics 57 (3), 455-458 (1999)