

**JAK1 Rabbit Polyclonal Antibody**  
Catalog # AP63805**Specification****JAK1 Rabbit Polyclonal Antibody - Product Information**

Application	IHC
Primary Accession	<a href="#">P23458</a>
Reactivity	Human, Mouse, Rat
Host	Rabbit
Clonality	Polyclonal

**JAK1 Rabbit Polyclonal Antibody - Additional Information****Gene ID** 3716**Other Names**

Tyrosine-protein kinase JAK1 (EC 2.7.10.2) (Janus kinase 1) (JAK-1)

**Dilution**

IHC~~IHC-p 1:50-300

**Format**

Liquid in PBS containing 50% glycerol, 0.5% BSA and 0.09% (W/V) sodium azide.

**Storage Conditions**

-20°C

**JAK1 Rabbit Polyclonal Antibody - Protein Information****Name** JAK1**Synonyms** JAK1A, JAK1B**Function**

Tyrosine kinase of the non-receptor type, involved in the IFN-alpha/beta/gamma signal pathway (PubMed: [16239216](http://www.uniprot.org/citations/16239216)), PubMed: [28111307](http://www.uniprot.org/citations/28111307), PubMed: [32750333](http://www.uniprot.org/citations/32750333), PubMed: [7615558](http://www.uniprot.org/citations/7615558), PubMed: [8232552](http://www.uniprot.org/citations/8232552)). Kinase partner for the interleukin (IL)-2 receptor (PubMed: [11909529](http://www.uniprot.org/citations/11909529)) as well as interleukin (IL)-10 receptor (PubMed: [12133952](http://www.uniprot.org/citations/12133952)). Kinase partner for the type I interferon receptor IFNAR2 (PubMed: [16239216](http://www.uniprot.org/citations/16239216), PubMed: [28111307](http://www.uniprot.org/citations/28111307), PubMed: [32750333](http://www.uniprot.org/citations/32750333), PubMed: [7615558](http://www.uniprot.org/citations/7615558)),

PubMed:<a href="http://www.uniprot.org/citations/8232552" target="\_blank">8232552</a>). In response to interferon-binding to IFNAR1-IFNAR2 heterodimer, phosphorylates and activates its binding partner IFNAR2, creating docking sites for STAT proteins (PubMed:<a href="http://www.uniprot.org/citations/7759950" target="\_blank">7759950</a>). Directly phosphorylates STAT proteins but also activates STAT signaling through the transactivation of other JAK kinases associated with signaling receptors (PubMed:<a href="http://www.uniprot.org/citations/16239216" target="\_blank">16239216</a>, PubMed:<a href="http://www.uniprot.org/citations/32750333" target="\_blank">32750333</a>, PubMed:<a href="http://www.uniprot.org/citations/8232552" target="\_blank">8232552</a>).

#### Cellular Location

Endomembrane system; Peripheral membrane protein. Note=Wholly intracellular, possibly membrane associated

#### Tissue Location

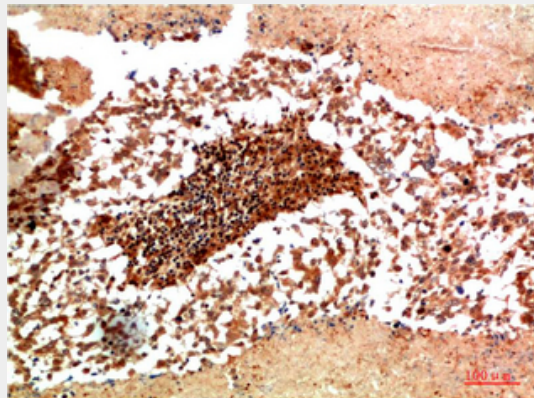
Expressed at higher levels in primary colon tumors than in normal colon tissue. The expression level in metastatic colon tumors is comparable to the expression level in normal colon tissue

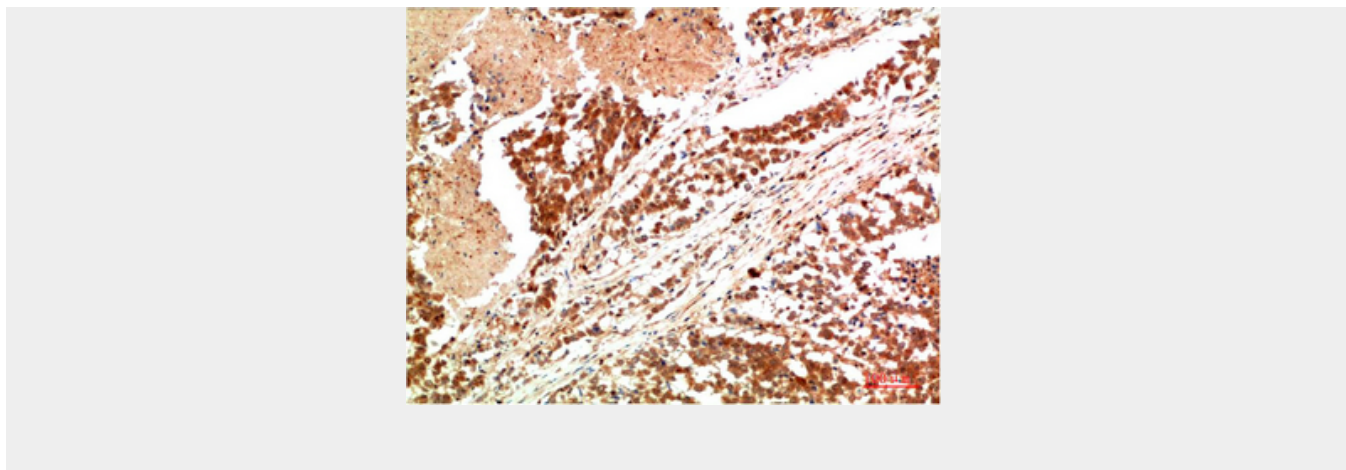
### JAK1 Rabbit Polyclonal Antibody - Protocols

Provided below are standard protocols that you may find useful for product applications.

- [Western Blot](#)
- [Blocking Peptides](#)
- [Dot Blot](#)
- [Immunohistochemistry](#)
- [Immunofluorescence](#)
- [Immunoprecipitation](#)
- [Flow Cytometry](#)
- [Cell Culture](#)

### JAK1 Rabbit Polyclonal Antibody - Images





### **JAK1 Rabbit Polyclonal Antibody - Background**

Tyrosine kinase of the non-receptor type, involved in the IFN-alpha/beta/gamma signal pathway (PubMed:7615558). Kinase partner for the interleukin (IL)-2 receptor (PubMed:11909529) as well as interleukin (IL)-10 receptor (PubMed:12133952).