

ALS2 Antibody (C-term)
Purified Rabbit Polyclonal Antibody (Pab)
Catalog # AP6501b**Specification**

ALS2 Antibody (C-term) - Product Information

Application	IHC-P, WB,E
Primary Accession	O96Q42
Other Accession	P0C5Y8
Reactivity	Human, Mouse
Predicted	Rat
Host	Rabbit
Clonality	Polyclonal
Isotype	Rabbit IgG
Calculated MW	183634
Antigen Region	1248-1277

ALS2 Antibody (C-term) - Additional Information**Gene ID** 57679**Other Names**

Alsin, Amyotrophic lateral sclerosis 2 chromosomal region candidate gene 6 protein, Amyotrophic lateral sclerosis 2 protein, ALS2, ALS2CR6, KIAA1563

Target/Specificity

This ALS2 antibody is generated from rabbits immunized with a KLH conjugated synthetic peptide between 1248-1277 amino acids from the C-terminal region of human ALS2.

Dilution

IHC-P~~1:50~100

WB~~1:1000

E~~Use at an assay dependent concentration.

Format

Purified polyclonal antibody supplied in PBS with 0.09% (W/V) sodium azide. This antibody is prepared by Saturated Ammonium Sulfate (SAS) precipitation followed by dialysis against PBS.

Storage

Maintain refrigerated at 2-8°C for up to 2 weeks. For long term storage store at -20°C in small aliquots to prevent freeze-thaw cycles.

Precautions

ALS2 Antibody (C-term) is for research use only and not for use in diagnostic or therapeutic procedures.

ALS2 Antibody (C-term) - Protein Information

Name ALS2

Synonyms ALS2CR6, KIAA1563

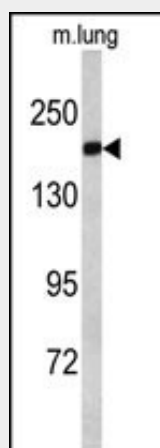
Function May act as a GTPase regulator. Controls survival and growth of spinal motoneurons (By similarity).

ALS2 Antibody (C-term) - Protocols

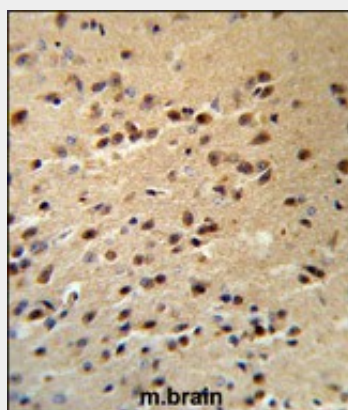
Provided below are standard protocols that you may find useful for product applications.

- [Western Blot](#)
- [Blocking Peptides](#)
- [Dot Blot](#)
- [Immunohistochemistry](#)
- [Immunofluorescence](#)
- [Immunoprecipitation](#)
- [Flow Cytometry](#)
- [Cell Culture](#)

ALS2 Antibody (C-term) - Images



Western blot analysis of ALS2 antibody (C-term) (Cat.# AP6501b) in mouse lung tissue lysates (35ug/lane). ALS2 (arrow) was detected using the purified Pab.



ALS2 Antibody (C-term) (RB18853) IHC analysis in formalin fixed and paraffin embedded human

brain tissue followed by peroxidase conjugation of the secondary antibody and DAB staining. This data demonstrates the use of the ALS2 Antibody (C-term) for immunohistochemistry. Clinical relevance has not been evaluated.

ALS2 Antibody (C-term) - Background

ALS2 contains an ATS1/RCC1-like domain, a RhoGEF domain, and a vacuolar protein sorting 9 (VPS9) domain, all of which are guanine-nucleotide exchange factors that activate members of the Ras superfamily of GTPases. The protein functions as a guanine nucleotide exchange factor for the small GTPase RAB5. The protein localizes with RAB5 on early endosomal compartments, and functions as a modulator for endosomal dynamics. Mutations in its gene result in several forms of juvenile lateral sclerosis and infantile-onset ascending spastic paralysis.

ALS2 Antibody (C-term) - References

Soares,D.C., J Mol Model 15 (2), 113-122 (2009)
Mintchev,N., Neurology 72 (1), 28-32 (2009)