

DPP8 Antibody (C-term)
Purified Rabbit Polyclonal Antibody (Pab)
Catalog # AP6506b**Specification**

DPP8 Antibody (C-term) - Product Information

Application	FC, IHC-P, WB,E
Primary Accession	Q6V1X1
Other Accession	Q80YA7
Reactivity	Human
Predicted	Mouse
Host	Rabbit
Clonality	Polyclonal
Isotype	Rabbit IgG
Calculated MW	103358
Antigen Region	846-876

DPP8 Antibody (C-term) - Additional Information**Gene ID** 54878**Other Names**

Dipeptidyl peptidase 8, DP8, Dipeptidyl peptidase IV-related protein 1, DPRP-1, Dipeptidyl peptidase VIII, DPP VIII, Prolyl dipeptidase DPP8, DPP8, DPRP1

Target/Specificity

This DPP8 antibody is generated from rabbits immunized with a KLH conjugated synthetic peptide between 846-876 amino acids from the C-terminal region of human DPP8.

Dilution

FC~~1:10~50

IHC-P~~1:50~100

WB~~1:1000

E~~Use at an assay dependent concentration.

Format

Purified polyclonal antibody supplied in PBS with 0.09% (W/V) sodium azide. This antibody is prepared by Saturated Ammonium Sulfate (SAS) precipitation followed by dialysis against PBS.

Storage

Maintain refrigerated at 2-8°C for up to 2 weeks. For long term storage store at -20°C in small aliquots to prevent freeze-thaw cycles.

Precautions

DPP8 Antibody (C-term) is for research use only and not for use in diagnostic or therapeutic procedures.

DPP8 Antibody (C-term) - Protein Information

Name DPP8 {ECO:0000303|PubMed:11012666, ECO:0000312|HGNC:HGNC:16490}

Function Dipeptidyl peptidase that cleaves off N-terminal dipeptides from proteins having a Pro or Ala residue at position 2 (PubMed:[11012666](#), PubMed:[12534281](#), PubMed:[12662155](#), PubMed:[15039077](#), PubMed:[15664838](#), PubMed:[20536396](#), PubMed:[29382749](#)). Acts as a key inhibitor of caspase-1-dependent monocyte and macrophage pyroptosis in resting cells by preventing activation of NLRP1 and CARD8 (PubMed:[27820798](#), PubMed:[29967349](#), PubMed:[32796818](#)). Sequesters the cleaved C-terminal part of NLRP1 and CARD8, which respectively constitute the active part of the NLRP1 and CARD8 inflammasomes, in a ternary complex, thereby preventing their oligomerization and activation (PubMed:[33731929](#), PubMed:[33731932](#), PubMed:[34019797](#)). The dipeptidyl peptidase activity is required to suppress NLRP1 and CARD8; however, neither NLRP1 nor CARD8 are bona fide substrates of DPP8, suggesting the existence of substrate(s) required for NLRP1 and CARD8 inhibition (By similarity).

Cellular Location

Cytoplasm

Tissue Location

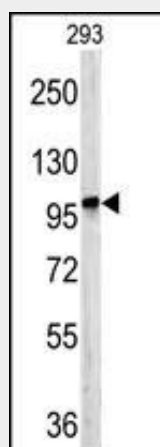
Ubiquitously expressed, with highest levels in testis, placenta, prostate, muscle and brain

DPP8 Antibody (C-term) - Protocols

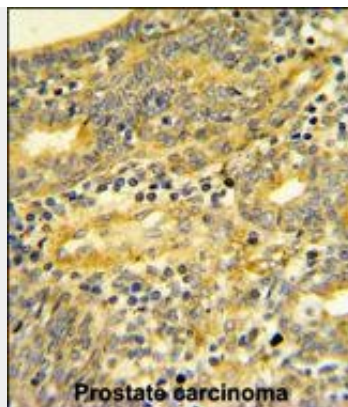
Provided below are standard protocols that you may find useful for product applications.

- [Western Blot](#)
- [Blocking Peptides](#)
- [Dot Blot](#)
- [Immunohistochemistry](#)
- [Immunofluorescence](#)
- [Immunoprecipitation](#)
- [Flow Cytometry](#)
- [Cell Culture](#)

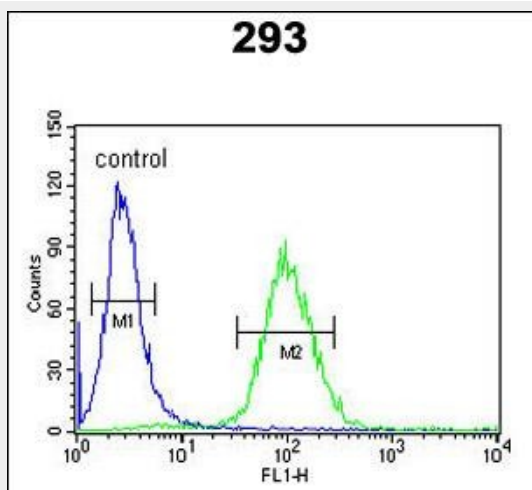
DPP8 Antibody (C-term) - Images



Western blot analysis of DPP8 antibody (C-term) (Cat.# AP6506b) in 293 cell line lysates (35ug/lane). DPP8 (arrow) was detected using the purified Pab.



DPP8 Antibody (C-term) (Cat.# AP6506b) IHC analysis in formalin fixed and paraffin embedded human Prostate carcinoma followed by peroxidase conjugation of the secondary antibody and DAB staining. This data demonstrates the use of the DPP8 Antibody (C-term) for immunohistochemistry. Clinical relevance has not been evaluated.



DPP8 Antibody (C-term) (Cat. #AP6506b) flow cytometric analysis of 293 cells (right histogram) compared to a negative control cell (left histogram). FITC-conjugated goat-anti-rabbit secondary antibodies were used for the analysis.

DPP8 Antibody (C-term) - Background

DPP8 is a member of the peptidase S9B family, a small family of dipeptidyl peptidases that are able to cleave peptide substrates at a prolyl bond. The protein shares similarity with dipeptidyl peptidase IV in that it is ubiquitously expressed, and hydrolyzes the same substrates. These similarities suggest that, like dipeptidyl peptidase IV, this protein may play a role in T-cell activation and immune function.

DPP8 Antibody (C-term) - References

- Ajami, K., FEBS Lett. 582 (5), 819-825 (2008)
- Lee, H.J., J. Biol. Chem. 281 (50), 38653-38662 (2006)