

**GADL1 Antibody (C-term)**  
**Purified Rabbit Polyclonal Antibody (Pab)**  
**Catalog # AP6509b****Specification**

---

**GADL1 Antibody (C-term) - Product Information**

Application	WB,E
Primary Accession	<a href="#">Q6ZQY3</a>
Other Accession	<a href="#">Q80WP8</a>
Reactivity	Human, Mouse
Host	Rabbit
Clonality	Polyclonal
Isotype	Rabbit IgG
Calculated MW	59246
Antigen Region	401-430

**GADL1 Antibody (C-term) - Additional Information****Gene ID** 339896**Other Names**

Acidic amino acid decarboxylase GADL1, Aspartate 1-decarboxylase, ADC, HuADC, Cysteine sulfinic acid decarboxylase, CSADC, HuCSADC, Glutamate decarboxylase-like protein 1, GADL1

**Target/Specificity**

This GADL1 antibody is generated from rabbits immunized with a KLH conjugated synthetic peptide between 401-430 amino acids from the C-terminal region of human GADL1.

**Dilution**

WB~~1:1000

E~~Use at an assay dependent concentration.

**Format**

Purified polyclonal antibody supplied in PBS with 0.09% (W/V) sodium azide. This antibody is prepared by Saturated Ammonium Sulfate (SAS) precipitation followed by dialysis against PBS.

**Storage**

Maintain refrigerated at 2-8°C for up to 2 weeks. For long term storage store at -20°C in small aliquots to prevent freeze-thaw cycles.

**Precautions**

GADL1 Antibody (C-term) is for research use only and not for use in diagnostic or therapeutic procedures.

**GADL1 Antibody (C-term) - Protein Information****Name** GADL1

**Function** May catalyze the decarboxylation of L-aspartate, 3-sulfinyl-L-alanine (cysteine sulfinic acid), and L-cysteate to beta-alanine, hypotaurine and taurine, respectively. Does not exhibit any decarboxylation activity toward glutamate.

**Tissue Location**

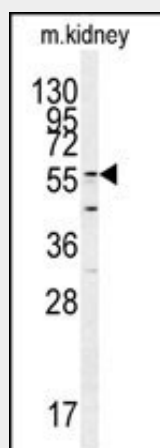
Expressed very weakly in neurons and not detected in astrocytes, brain or liver.

**GADL1 Antibody (C-term) - Protocols**

Provided below are standard protocols that you may find useful for product applications.

- [Western Blot](#)
- [Blocking Peptides](#)
- [Dot Blot](#)
- [Immunohistochemistry](#)
- [Immunofluorescence](#)
- [Immunoprecipitation](#)
- [Flow Cytometry](#)
- [Cell Culture](#)

**GADL1 Antibody (C-term) - Images**



Western blot analysis of GADL1 antibody (C-term) (Cat.# AP6509b) in mouse kidney tissue lysates (35ug/lane). GADL1 (arrow) was detected using the purified Pab.

**GADL1 Antibody (C-term) - Background**

GADL1 belongs to the group II decarboxylase family.