

**CEA Antibody (Center)**  
**Purified Rabbit Polyclonal Antibody (Pab)**  
**Catalog # AP6513c**

**Specification**

---

**CEA Antibody (Center) - Product Information**

Application	IHC-P-Leica, FC, WB,E
Primary Accession	<a href="#">P06731</a>
Reactivity	Human
Host	Rabbit
Clonality	Polyclonal
Isotype	Rabbit IgG
Antigen Region	400-429

**CEA Antibody (Center) - Additional Information**

**Gene ID** 1048

**Other Names**

Carcinoembryonic antigen-related cell adhesion molecule 5, Carcinoembryonic antigen, CEA, Meconium antigen 100, CD66e, CEACAM5, CEA

**Target/Specificity**

This CEA antibody is generated from rabbits immunized with a KLH conjugated synthetic peptide between 400-429 amino acids from the Central region of human CEA.

**Dilution**

IHC-P-Leica~~1:500

FC~~1:10~50

WB~~1:1000

E~~Use at an assay dependent concentration.

**Format**

Purified polyclonal antibody supplied in PBS with 0.09% (W/V) sodium azide. This antibody is purified through a protein A column, followed by peptide affinity purification.

**Storage**

Maintain refrigerated at 2-8°C for up to 2 weeks. For long term storage store at -20°C in small aliquots to prevent freeze-thaw cycles.

**Precautions**

CEA Antibody (Center) is for research use only and not for use in diagnostic or therapeutic procedures.

**CEA Antibody (Center) - Protein Information**

**Name** CEACAM5 ([HGNC:1817](#))

**Function** Cell surface glycoprotein that plays a role in cell adhesion, intracellular signaling and tumor progression (PubMed:[10864933](#), PubMed:[10910050](#), PubMed:[2803308](#)). Mediates homophilic and heterophilic cell adhesion with other carcinoembryonic antigen-related cell adhesion molecules, such as CEACAM6 (PubMed:[2803308](#)). Plays a role as an oncogene by promoting tumor progression; induces resistance to anoikis of colorectal carcinoma cells (PubMed:[10910050](#)).

#### Cellular Location

Cell membrane; Lipid-anchor, GPI-anchor. Apical cell membrane. Cell surface Note=Localized to the apical glycocalyx surface

#### Tissue Location

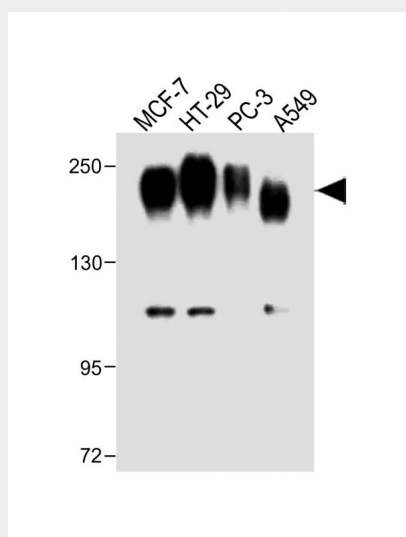
Expressed in columnar epithelial and goblet cells of the colon (at protein level) (PubMed:10436421). Found in adenocarcinomas of endodermally derived digestive system epithelium and fetal colon.

### CEA Antibody (Center) - Protocols

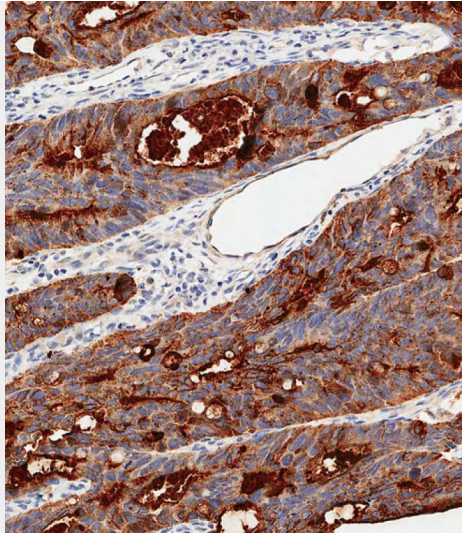
Provided below are standard protocols that you may find useful for product applications.

- [Western Blot](#)
- [Blocking Peptides](#)
- [Dot Blot](#)
- [Immunohistochemistry](#)
- [Immunofluorescence](#)
- [Immunoprecipitation](#)
- [Flow Cytometry](#)
- [Cell Culture](#)

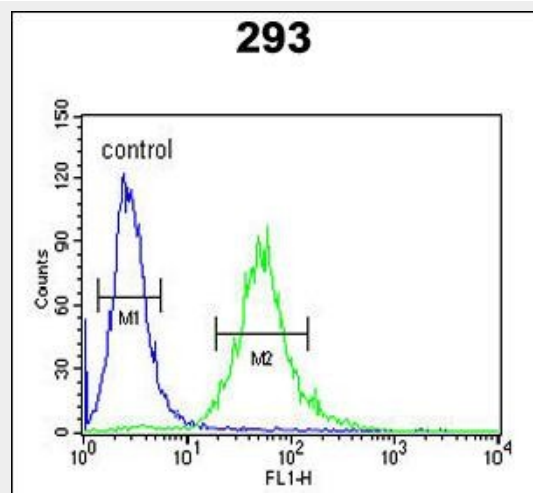
### CEA Antibody (Center) - Images



All lanes : Anti-CEA Antibody (Center) at 1:1000 dilution Lane 1: MCF-7 whole cell lysate Lane 2: HT-29 whole cell lysate Lane 3: PC-3 whole cell lysate Lane 4: A549 whole cell lysate Lysates/proteins at 20 µg per lane. Secondary Goat Anti-Rabbit IgG, (H+L), Peroxidase conjugated at 1/10000 dilution. Predicted band size : 77 kDa Blocking/Dilution buffer: 5% NFDM/TBST.



Immunohistochemical analysis of paraffin-embedded Human colon carcinoma tissue using AP6513C performed on the Leica® BOND RXm. Tissue was fixed with formaldehyde at room temperature, antigen retrieval was by heat mediation with a EDTA buffer (pH9.0). Samples were incubated with primary antibody(1:500) for 1 hours at room temperature. A undiluted biotinylated CRF Anti-Polyvalent HRP Polymer antibody was used as the secondary antibody.



CEA Antibody (Center) (Cat. #AP6513c) flow cytometric analysis of 293 cells (right histogram) compared to a negative control cell (left histogram). FITC-conjugated goat-anti-rabbit secondary antibodies were used for the analysis.

### CEA Antibody (Center) - Background

CEA is a cell surface glycoprotein that plays a role in cell adhesion and in intracellular signaling. It is a receptor for E.coli Dr adhesins.

### CEA Antibody (Center) - References

Lagoudianakis, E.E., J. Surg. Res. 155 (2), 183-190 (2009)  
Gambichler, T., Am. J. Clin. Pathol. 131 (6), 782-787 (2009)