

ARPC1A Antibody (C-term)
Purified Rabbit Polyclonal Antibody (Pab)
Catalog # AP6519B**Specification**

ARPC1A Antibody (C-term) - Product Information

Application	FC, IF, IHC-P, WB,E
Primary Accession	Q92747
Other Accession	Q99PD4 , Q9R0Q6 , Q1JP79 , Q8AVT9 , A0A1L8EXB5
Reactivity	Human
Predicted	Xenopus, Bovine, Mouse, Rat
Host	Rabbit
Clonality	Polyclonal
Isotype	Rabbit IgG
Calculated MW	41569
Antigen Region	286-315

ARPC1A Antibody (C-term) - Additional Information**Gene ID** 10552**Other Names**

Actin-related protein 2/3 complex subunit 1A, SOP2-like protein, ARPC1A, SOP2L

Target/Specificity

This ARPC1A antibody is generated from rabbits immunized with a KLH conjugated synthetic peptide between 286-315 amino acids from the C-terminal region of human ARPC1A.

Dilution

FC~~1:10~50

IF~~1:10~50

IHC-P~~1:10~50

WB~~1:1000

E~~Use at an assay dependent concentration.

Format

Purified polyclonal antibody supplied in PBS with 0.09% (W/V) sodium azide. This antibody is prepared by Saturated Ammonium Sulfate (SAS) precipitation followed by dialysis against PBS.

Storage

Maintain refrigerated at 2-8°C for up to 2 weeks. For long term storage store at -20°C in small aliquots to prevent freeze-thaw cycles.

Precautions

ARPC1A Antibody (C-term) is for research use only and not for use in diagnostic or therapeutic procedures.

ARPC1A Antibody (C-term) - Protein Information

Name ARPC1A

Synonyms SOP2L

Function Probably functions as a component of the Arp2/3 complex which is involved in regulation of actin polymerization and together with an activating nucleation-promoting factor (NPF) mediates the formation of branched actin networks.

Cellular Location

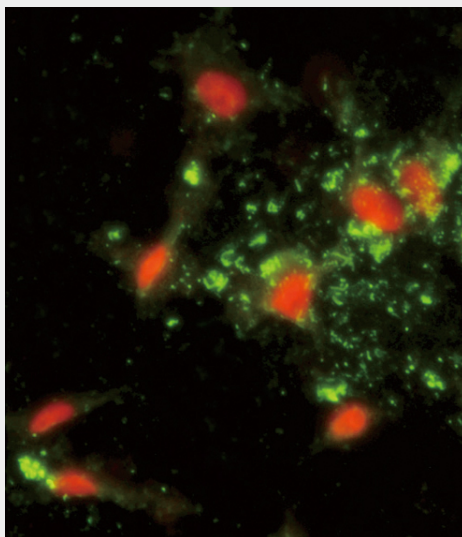
Cytoplasm, cytoskeleton. Nucleus {ECO:0000250|UniProtKB:Q8AVT9}

ARPC1A Antibody (C-term) - Protocols

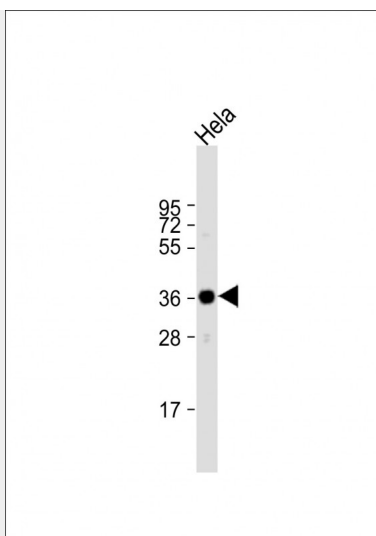
Provided below are standard protocols that you may find useful for product applications.

- [Western Blot](#)
- [Blocking Peptides](#)
- [Dot Blot](#)
- [Immunohistochemistry](#)
- [Immunofluorescence](#)
- [Immunoprecipitation](#)
- [Flow Cytometry](#)
- [Cell Culture](#)

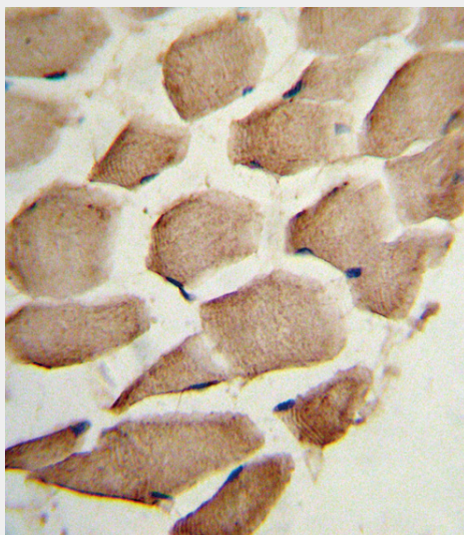
ARPC1A Antibody (C-term) - Images



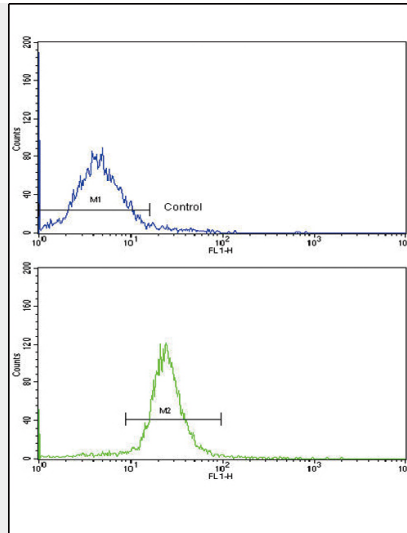
Immunofluorescence analysis of ARPC1A Antibody (C-term) with HeLa cells. 0.025 mg/ml primary antibody was followed by FITC-conjugated goat anti-rabbit IgG (whole molecule). FITC emits green fluorescence. Red counterstaining is PI.



Anti-ARPC1A Antibody (C-term) at 1:1000 dilution + HeLa whole cell lysate Lysates/proteins at 20 μ g per lane. Secondary Goat Anti-Rabbit IgG, (H+L), Peroxidase conjugated at 1/10000 dilution. Predicted band size : 42 kDa Blocking/Dilution buffer: 5% NFDM/TBST.



Formalin-fixed and paraffin-embedded human skeletal muscle reacted with ARPC1A Antibody (C-term), which was peroxidase-conjugated to the secondary antibody, followed by DAB staining. This data demonstrates the use of this antibody for immunohistochemistry; clinical relevance has not been evaluated.



Flow cytometric analysis of WiDr cells using ARPC1A Antibody (C-term)(bottom histogram) compared to a negative control cell (top histogram). FITC-conjugated goat-anti-rabbit secondary antibodies were used for the analysis.

ARPC1A Antibody (C-term) - Background

ARPC1A is one of seven subunits of the human Arp2/3 protein complex. This subunit is a member of the SOP2 family of proteins and is most similar to the protein ARPC1B. The similarity between these two proteins suggests that they both may function as p41 subunit of the human Arp2/3 complex that has been implicated in the control of actin polymerization in cells. It is possible that the p41 subunit is involved in assembling and maintaining the structure of the Arp2/3 complex. Multiple versions of the p41 subunit may adapt the functions of the complex to different cell types or developmental stages.

ARPC1A Antibody (C-term) - References

Laurila,E., Genes Chromosomes Cancer 48 (4), 330-339 (2009)
Machesky,L.M., Biochem. J. 328 (PT 1), 105-112 (1997)