

CLNS1A Antibody (C-term)
Purified Rabbit Polyclonal Antibody (Pab)
Catalog # AP6520b**Specification**

CLNS1A Antibody (C-term) - Product Information

Application	IHC-P, FC, WB,E
Primary Accession	P54105
Other Accession	Q28678
Reactivity	Human
Predicted	Rabbit
Host	Rabbit
Clonality	Polyclonal
Isotype	Rabbit IgG
Antigen Region	189-216

CLNS1A Antibody (C-term) - Additional Information**Gene ID** 1207**Other Names**

Methylosome subunit pICln, Chloride channel, nucleotide sensitive 1A, Chloride conductance regulatory protein ICln, I(Cln), Chloride ion current inducer protein, CLCI, Reticulocyte pICln, CLNS1A, CLCI, ICLN

Target/Specificity

This CLNS1A antibody is generated from rabbits immunized with a KLH conjugated synthetic peptide between 189-216 amino acids from the C-terminal region of human CLNS1A.

Dilution

IHC-P~~1:50~100

FC~~1:10~50

WB~~1:8000

E~~Use at an assay dependent concentration.

Format

Purified polyclonal antibody supplied in PBS with 0.09% (W/V) sodium azide. This antibody is prepared by Saturated Ammonium Sulfate (SAS) precipitation followed by dialysis against PBS.

Storage

Maintain refrigerated at 2-8°C for up to 2 weeks. For long term storage store at -20°C in small aliquots to prevent freeze-thaw cycles.

Precautions

CLNS1A Antibody (C-term) is for research use only and not for use in diagnostic or therapeutic procedures.

CLNS1A Antibody (C-term) - Protein Information

Name CLNS1A

Synonyms CLCI, ICLN

Function Involved in both the assembly of spliceosomal snRNPs and the methylation of Sm proteins (PubMed:[10330151](#), PubMed:[11713266](#), PubMed:[18984161](#), PubMed:[21081503](#)). Chaperone that regulates the assembly of spliceosomal U1, U2, U4 and U5 small nuclear ribonucleoproteins (snRNPs), the building blocks of the spliceosome, and thereby plays an important role in the splicing of cellular pre- mRNAs (PubMed:[10330151](#), PubMed:[18984161](#)). Most spliceosomal snRNPs contain a common set of Sm proteins SNRPB, SNRPD1, SNRPD2, SNRPD3, SNRPE, SNRPF and SNRPG that assemble in a heptameric protein ring on the Sm site of the small nuclear RNA to form the core snRNP (Sm core) (PubMed:[10330151](#)). In the cytosol, the Sm proteins SNRPD1, SNRPD2, SNRPE, SNRPF and SNRPG are trapped in an inactive 6S pICln-Sm complex by the chaperone CLNS1A that controls the assembly of the core snRNP (PubMed:[10330151](#), PubMed:[18984161](#)). Dissociation by the SMN complex of CLNS1A from the trapped Sm proteins and their transfer to an SMN-Sm complex triggers the assembly of core snRNPs and their transport to the nucleus (PubMed:[10330151](#), PubMed:[18984161](#)).

Cellular Location

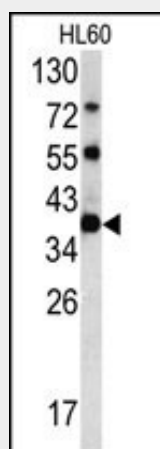
Cytoplasm, cytosol. Nucleus. Cytoplasm, cytoskeleton. Note=A small fraction is also associated with the cytoskeleton (PubMed:[18984161](#))

CLNS1A Antibody (C-term) - Protocols

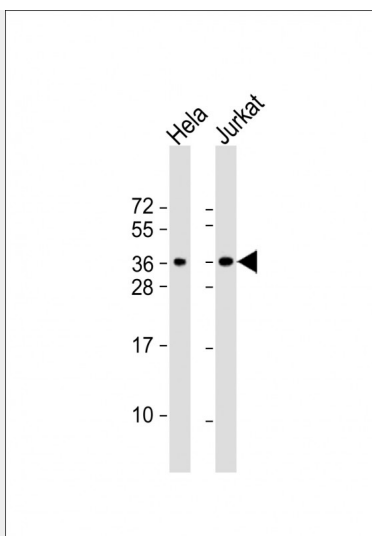
Provided below are standard protocols that you may find useful for product applications.

- [Western Blot](#)
- [Blocking Peptides](#)
- [Dot Blot](#)
- [Immunohistochemistry](#)
- [Immunofluorescence](#)
- [Immunoprecipitation](#)
- [Flow Cytometry](#)
- [Cell Culture](#)

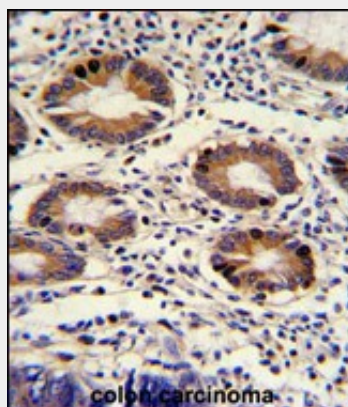
CLNS1A Antibody (C-term) - Images



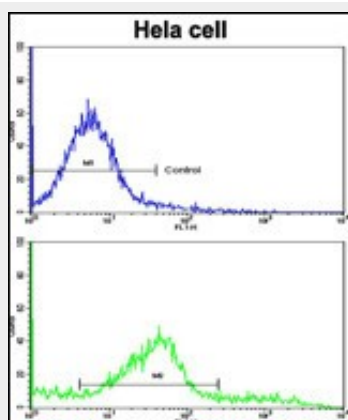
Western blot analysis of CLNS1A antibody (C-term) (Cat.# AP6520b) in HL60 cell line lysates (35ug/lane). CLNS1A (arrow) was detected using the purified Pab.



All lanes : Anti-CLNS1A Antibody (C-term) at 1:8000 dilution Lane 1: HeLa whole cell lysate Lane 2: Jurkat whole cell lysate Lysates/proteins at 20 µg per lane. Secondary Goat Anti-Rabbit IgG, (H+L), Peroxidase conjugated at 1/10000 dilution. Predicted band size : 26 kDa Blocking/Dilution buffer: 5% NFDM/TBST.



Formalin-fixed and paraffin-embedded human colon carcinoma with CLNS1A Antibody (C-term), which was peroxidase-conjugated to the secondary antibody, followed by DAB staining. This data demonstrates the use of this antibody for immunohistochemistry; clinical relevance has not been evaluated.



Flow cytometric analysis of hela cells using CLNS1A Antibody (C-term)(bottom histogram) compared to a negative control (top histogram). FITC-conjugated goat-anti-rabbit secondary antibodies were used for the analysis.

CLNS1A Antibody (C-term) - Background

CLNS1A is a protein that functions in multiple regulatory pathways. The protein complexes with numerous cytosolic proteins and performs diverse functions including regulation of small nuclear ribonucleoprotein biosynthesis, platelet activation and cytoskeletal organization. The protein is also found associated with the plasma membrane where it functions as a chloride current regulator.

CLNS1A Antibody (C-term) - References

Yeung,C.H., Biol. Reprod. 73 (5), 1057-1063 (2005)