

**DCL-1 Antibody (Center)**  
**Affinity Purified Rabbit Polyclonal Antibody (Pab)**  
**Catalog # AP6522c**

**Specification**

---

**DCL-1 Antibody (Center) - Product Information**

Application	FC, IHC-P, WB,E
Primary Accession	<a href="#">Q8IX05</a>
Reactivity	Human, Mouse
Host	Rabbit
Clonality	Polyclonal
Isotype	Rabbit IgG
Calculated MW	26183
Antigen Region	143-170

**DCL-1 Antibody (Center) - Additional Information**

**Gene ID** 9936

**Other Names**

CD302 antigen, C-type lectin BIMLEC, C-type lectin domain family 13 member A, DEC205-associated C-type lectin 1, Type I transmembrane C-type lectin receptor DCL-1, CD302, CD302, CLEC13A, DCL1, KIAA0022

**Target/Specificity**

This DCL-1 antibody is generated from rabbits immunized with a KLH conjugated synthetic peptide between 143-170 amino acids from the Central region of human DCL-1.

**Dilution**

FC~~1:10~50

IHC-P~~1:50~100

WB~~1:1000

E~~Use at an assay dependent concentration.

**Format**

Purified polyclonal antibody supplied in PBS with 0.09% (W/V) sodium azide. This antibody is purified through a protein A column, followed by peptide affinity purification.

**Storage**

Maintain refrigerated at 2-8°C for up to 2 weeks. For long term storage store at -20°C in small aliquots to prevent freeze-thaw cycles.

**Precautions**

DCL-1 Antibody (Center) is for research use only and not for use in diagnostic or therapeutic procedures.

**DCL-1 Antibody (Center) - Protein Information**

**Name** CD302

**Synonyms** CLEC13A, DCL1, KIAA0022

**Function** Potential multifunctional C-type lectin receptor that may play roles in endocytosis and phagocytosis as well as in cell adhesion and migration.

**Cellular Location**

Membrane; Single-pass type I membrane protein. Cell projection, filopodium. Cytoplasm, cell cortex. Cell projection, microvillus. Note=Colocalizes with F-actin in filopodia, cellular cortex and microvilli of the apical cell surface

**Tissue Location**

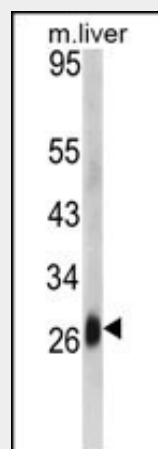
Expressed at moderate levels in monocytes, myeloid blood dendritic cells and granulocytes and at low levels in plasmacytoid blood dendritic cells, monocyte-derived macrophages and monocyte-derived dendritic cells, with no expression detected in T- lymphocytes, B-lymphocytes and natural killer cells (at protein level) Expressed widely in different tissues, with highest expression levels in liver, lung, peripheral blood leukocytes and spleen, and lowest levels in neuronal tissues, skeletal muscle and ovary. Isoform 2 and isoform 3 are expressed in malignant Hodgkin lymphoma cells called Hodgkin and Reed-Sternberg (HRS) cells.

**DCL-1 Antibody (Center) - Protocols**

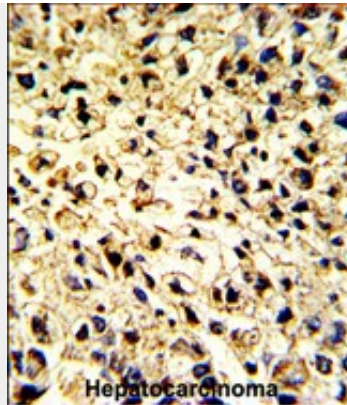
Provided below are standard protocols that you may find useful for product applications.

- [Western Blot](#)
- [Blocking Peptides](#)
- [Dot Blot](#)
- [Immunohistochemistry](#)
- [Immunofluorescence](#)
- [Immunoprecipitation](#)
- [Flow Cytometry](#)
- [Cell Culture](#)

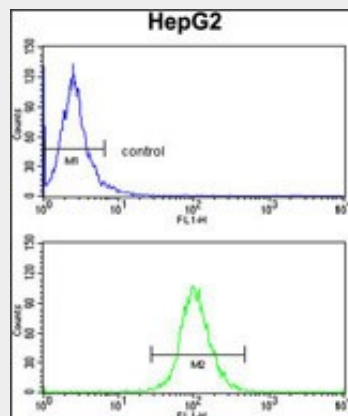
**DCL-1 Antibody (Center) - Images**



Western blot analysis of DCL-1 Antibody (Center) (Cat. #AP6522c) in mouse liver tissue lysates (35ug/lane). DCL-1 (arrow) was detected using the purified Pab.



Formalin-fixed and paraffin-embedded human hepatocarcinoma with DCL-1 Antibody (Center), which was peroxidase-conjugated to the secondary antibody, followed by DAB staining. This data demonstrates the use of this antibody for immunohistochemistry; clinical relevance has not been evaluated.



DCL-1 Antibody (Center) (Cat.#AP6522c) flow cytometry analysis of HepG2 cells (bottom histogram) compared to a negative control cell (top histogram). FITC-conjugated goat-anti-rabbit secondary antibodies were used for the analysis.

#### **DCL-1 Antibody (Center) - Background**

CD302 is a C-type lectin receptor involved in cell adhesion and migration, as well as endocytosis and phagocytosis.

#### **DCL-1 Antibody (Center) - References**

Kato,M., J. Immunol. 179 (9), 6052-6063 (2007)