

EEF1D Antibody (N-term)
Purified Rabbit Polyclonal Antibody (Pab)
Catalog # AP6523a**Specification**

EEF1D Antibody (N-term) - Product Information

Application	FC, IHC-P, WB,E
Primary Accession	P29692
Other Accession	Q68FR9 , P57776 , Q4R3D4
Reactivity	Human
Predicted	Monkey, Mouse, Rat
Host	Rabbit
Clonality	Polyclonal
Isotype	Rabbit IgG
Calculated MW	31122
Antigen Region	1-30

EEF1D Antibody (N-term) - Additional Information**Gene ID** 1936**Other Names**

Elongation factor 1-delta, EF-1-delta, Antigen NY-CO-4, EEF1D, EF1D

Target/Specificity

This EEF1D antibody is generated from rabbits immunized with a KLH conjugated synthetic peptide between 1-30 amino acids from the N-terminal region of human EEF1D.

Dilution

FC~~1:10~50

IHC-P~~1:50~100

WB~~1:1000

E~~Use at an assay dependent concentration.

Format

Purified polyclonal antibody supplied in PBS with 0.09% (W/V) sodium azide. This antibody is prepared by Saturated Ammonium Sulfate (SAS) precipitation followed by dialysis against PBS.

Storage

Maintain refrigerated at 2-8°C for up to 2 weeks. For long term storage store at -20°C in small aliquots to prevent freeze-thaw cycles.

Precautions

EEF1D Antibody (N-term) is for research use only and not for use in diagnostic or therapeutic procedures.

EEF1D Antibody (N-term) - Protein Information

Name EEF1D

Synonyms EF1D

Function [Isoform 1]: EF-1-beta and EF-1-delta stimulate the exchange of GDP bound to EF-1-alpha to GTP, regenerating EF-1-alpha for another round of transfer of aminoacyl-tRNAs to the ribosome.

Cellular Location

[Isoform 2]: Nucleus

Tissue Location

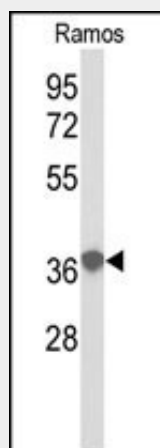
Isoform 2 is specifically expressed in brain, cerebellum and testis

EEF1D Antibody (N-term) - Protocols

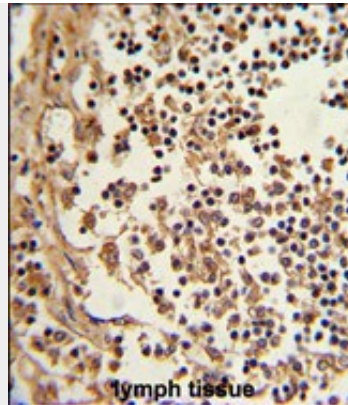
Provided below are standard protocols that you may find useful for product applications.

- [Western Blot](#)
- [Blocking Peptides](#)
- [Dot Blot](#)
- [Immunohistochemistry](#)
- [Immunofluorescence](#)
- [Immunoprecipitation](#)
- [Flow Cytometry](#)
- [Cell Culture](#)

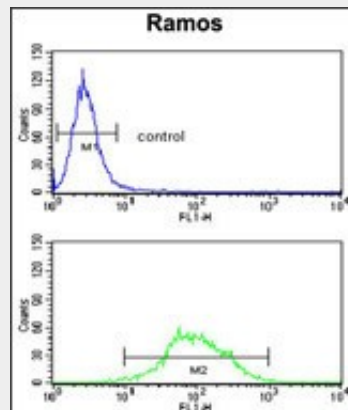
EEF1D Antibody (N-term) - Images



Western blot analysis of EEF1D antibody (N-term) (Cat.# AP6523a) in Ramos cell line lysates (35ug/lane). EEF1D (arrow) was detected using the purified Pab.



Formalin-fixed and paraffin-embedded human lymph reacted with EEF1D Antibody (N-term), which was peroxidase-conjugated to the secondary antibody, followed by DAB staining. This data demonstrates the use of this antibody for immunohistochemistry; clinical relevance has not been evaluated.



EEF1D Antibody (N-term) (Cat. #AP6523a) flow cytometry analysis of Ramos cells (bottom histogram) compared to a negative control cell (top histogram). FITC-conjugated goat-anti-rabbit secondary antibodies were used for the analysis.

EEF1D Antibody (N-term) - Background

EEF1D is a subunit of the elongation factor-1 complex, which is responsible for the enzymatic delivery of aminoacyl tRNAs to the ribosome. This subunit functions as guanine nucleotide exchange factor. It is reported that this subunit interacts with HIV-1 Tat, and thus it represses the translation of host-cell, but not HIV-1, mRNAs.

EEF1D Antibody (N-term) - References

- Yang, S., BMC Cancer 7, 211 (2007)
 Mulner-Lorillon, O., J. Biol. Chem. 269 (31), 20201-20207 (1994)