

**ACTG1 Antibody (Center)**  
**Purified Rabbit Polyclonal Antibody (Pab)**  
**Catalog # AP6532c****Specification****ACTG1 Antibody (Center) - Product Information**

Application	IF, WB, FC,E
Primary Accession	<a href="#">P63261</a>
Other Accession	<a href="#">P60010</a> , <a href="#">P68136</a> , <a href="#">P68135</a> , <a href="#">P68137</a> , <a href="#">P68134</a> , <a href="#">P68133</a> , <a href="#">P68139</a> , <a href="#">P68138</a> , <a href="#">P63269</a> , <a href="#">P63268</a> , <a href="#">P63267</a> , <a href="#">P63270</a> , <a href="#">Q5E9B5</a> , <a href="#">A2BDB0</a> , <a href="#">P63259</a> , <a href="#">P63260</a> , <a href="#">Q5ZMQ2</a> , <a href="#">P63258</a> , <a href="#">P04751</a> , <a href="#">P68035</a> , <a href="#">P68033</a> , <a href="#">P68032</a> , <a href="#">P68034</a> , <a href="#">Q3ZC07</a> , <a href="#">Q93400</a> , <a href="#">P60711</a> , <a href="#">P29751</a> , <a href="#">Q6QAO1</a> , <a href="#">P60710</a> , <a href="#">Q4R561</a> , <a href="#">P60709</a> , <a href="#">P48975</a>
Reactivity	Human
Predicted	C.Elegans, Drosophila, Xenopus, Chicken, Bovine, Mouse, Rabbit, Rat, Zebrafish, Hamster, Horse, Monkey, Pig, Sheep, Yeast
Host	Rabbit
Clonality	Polyclonal
Isotype	Rabbit IgG
Calculated MW	41793
Antigen Region	188-215

**ACTG1 Antibody (Center) - Additional Information****Gene ID 71****Other Names**

Actin, cytoplasmic 2, Gamma-actin, Actin, cytoplasmic 2, N-terminally processed, ACTG1, ACTG

**Target/Specificity**

This ACTG1 antibody is generated from rabbits immunized with a KLH conjugated synthetic peptide between 188-215 amino acids from the Central region of human ACTG1.

**Dilution**

IF~~1:10~50

WB~~1:1000

FC~~1:10~50

E~~Use at an assay dependent concentration.

**Format**

Purified polyclonal antibody supplied in PBS with 0.09% (W/V) sodium azide. This antibody is prepared by Saturated Ammonium Sulfate (SAS) precipitation followed by dialysis against PBS.

**Storage**

Maintain refrigerated at 2-8°C for up to 2 weeks. For long term storage store at -20°C in small aliquots to prevent freeze-thaw cycles.

**Precautions**

ACTG1 Antibody (Center) is for research use only and not for use in diagnostic or therapeutic procedures.

**ACTG1 Antibody (Center) - Protein Information**

**Name** ACTG1

**Synonyms** ACTG

**Function** Actins are highly conserved proteins that are involved in various types of cell motility and are ubiquitously expressed in all eukaryotic cells. May play a role in the repair of noise-induced stereocilia gaps thereby maintains hearing sensitivity following loud noise damage (By similarity).

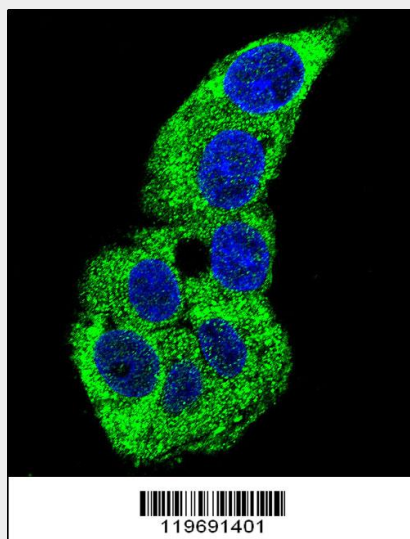
**Cellular Location**

Cytoplasm, cytoskeleton

**ACTG1 Antibody (Center) - Protocols**

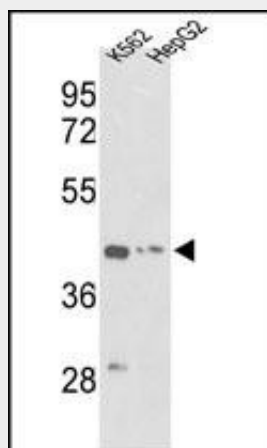
Provided below are standard protocols that you may find useful for product applications.

- [Western Blot](#)
- [Blocking Peptides](#)
- [Dot Blot](#)
- [Immunohistochemistry](#)
- [Immunofluorescence](#)
- [Immunoprecipitation](#)
- [Flow Cytometry](#)
- [Cell Culture](#)

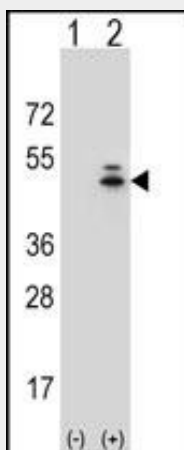
**ACTG1 Antibody (Center) - Images**

Confocal immunofluorescent analysis of ACTG1 Antibody (Center)(Cat#AP6532c) with HepG2 cell followed by Alexa Fluor 488-conjugated goat anti-rabbit IgG (green). DAPI was used to stain the

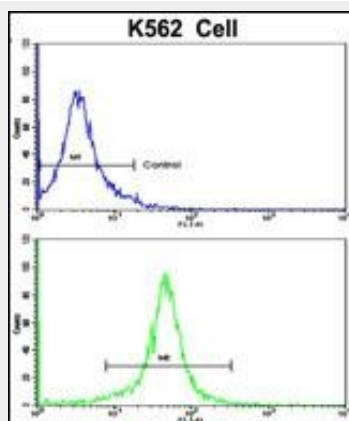
cell nuclear (blue).



Western blot analysis of ACTG1 Antibody (Center) (Cat.# AP6532c) in K562, HepG2 cell line lysates (35ug/lane). ACTG1 (arrow) was detected using the purified Pab.



Western blot analysis of ACTG1 (arrow) using rabbit polyclonal ACTG1 Antibody (Center) (Cat.#AP6532c). 293 cell lysates (2 ug/lane) either nontransfected (Lane 1) or transiently transfected (Lane 2) with the ACTG1 gene.



Flow cytometric analysis of K562 cells using ACTG1 Antibody (Center)(bottom histogram) compared to a negative control cell (top histogram). FITC-conjugated goat-anti-rabbit secondary antibodies were used for the analysis.

#### ACTG1 Antibody (Center) - Background

Actins are highly conserved proteins that are involved in various types of cell motility, and maintenance of the cytoskeleton. In vertebrates, three main groups of actin isoforms, alpha, beta and gamma have been identified. The alpha actins are found in muscle tissues and are a major constituent of the contractile apparatus. The beta and gamma actins co-exist in most cell types as components of the cytoskeleton, and as mediators of internal cell motility. Actin, gamma 1, is a cytoplasmic actin found in nonmuscle cells.

#### **ACTG1 Antibody (Center) - References**

de Heer,A.M., Ann. Otol. Rhinol. Laryngol. 118 (5), 382-390 (2009)  
Mouilleron,S., EMBO J. 27 (23), 3198-3208 (2008)  
Liu,P., J Genet Genomics 35 (9), 553-558 (2008)