

ORM1 Antibody (C-term)
Purified Rabbit Polyclonal Antibody (Pab)
Catalog # AP6536b**Specification**

ORM1 Antibody (C-term) - Product Information

Application	WB, FC,E
Primary Accession	P02763
Reactivity	Human
Host	Rabbit
Clonality	Polyclonal
Isotype	Rabbit IgG
Calculated MW	23540
Antigen Region	152-180

ORM1 Antibody (C-term) - Additional Information**Gene ID** 5004**Other Names**

Alpha-1-acid glycoprotein 1, AGP 1, Orosomucoid-1, OMD 1, ORM1, AGP1

Target/Specificity

This ORM1 antibody is generated from rabbits immunized with a KLH conjugated synthetic peptide between 152-180 amino acids from the C-terminal region of human ORM1.

Dilution

WB~~1:1000

FC~~1:10~50

E~~Use at an assay dependent concentration.

Format

Purified polyclonal antibody supplied in PBS with 0.09% (W/V) sodium azide. This antibody is prepared by Saturated Ammonium Sulfate (SAS) precipitation followed by dialysis against PBS.

Storage

Maintain refrigerated at 2-8°C for up to 2 weeks. For long term storage store at -20°C in small aliquots to prevent freeze-thaw cycles.

Precautions

ORM1 Antibody (C-term) is for research use only and not for use in diagnostic or therapeutic procedures.

ORM1 Antibody (C-term) - Protein Information**Name** ORM1**Synonyms** AGP1

Function Functions as a transport protein in the blood stream. Binds various ligands in the interior of its beta-barrel domain. Also binds synthetic drugs and influences their distribution and availability in the body. Appears to function in modulating the activity of the immune system during the acute-phase reaction.

Cellular Location

Secreted.

Tissue Location

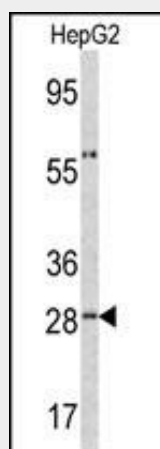
Expressed by the liver and secreted in plasma.

ORM1 Antibody (C-term) - Protocols

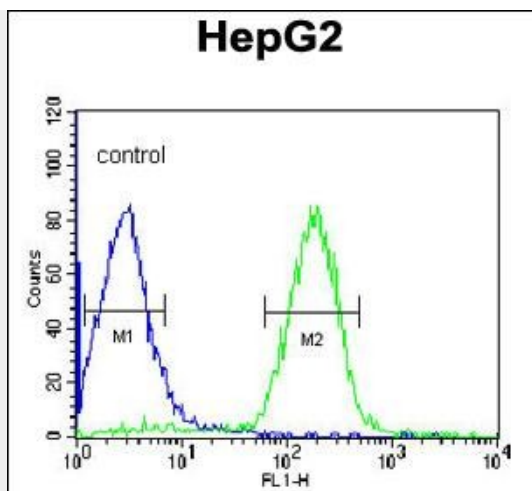
Provided below are standard protocols that you may find useful for product applications.

- [Western Blot](#)
- [Blocking Peptides](#)
- [Dot Blot](#)
- [Immunohistochemistry](#)
- [Immunofluorescence](#)
- [Immunoprecipitation](#)
- [Flow Cytometry](#)
- [Cell Culture](#)

ORM1 Antibody (C-term) - Images



Western blot analysis of ORM1 antibody (C-term) (Cat.# AP6536b) in HepG2 cell line lysates (35ug/lane). ORM1 (arrow) was detected using the purified Pab.



ORM1 Antibody (C-term) (Cat. #AP6536b) flow cytometric analysis of HepG2 cells (right histogram) compared to a negative control cell (left histogram). FITC-conjugated goat-anti-rabbit secondary antibodies were used for the analysis.

ORM1 Antibody (C-term) - Background

ORM1 is a key acute phase plasma protein. Because of its increase due to acute inflammation, this protein is classified as an acute-phase reactant. The specific function of this protein has not yet been determined; however, it may be involved in aspects of immunosuppression.

ORM1 Antibody (C-term) - References

Harley, J., J. Psychopharmacol. (Oxford) (2009)
Budai, L., Anal Bioanal Chem 393 (3), 991-998 (2009)