

CPB2 Antibody (Center E134)
Purified Rabbit Polyclonal Antibody (Pab)
Catalog # AP6541c**Specification**

CPB2 Antibody (Center E134) - Product Information

Application	WB,E
Primary Accession	Q96IY4
Reactivity	Human
Host	Rabbit
Clonality	Polyclonal
Isotype	Rabbit IgG
Calculated MW	48424
Antigen Region	119-148

CPB2 Antibody (Center E134) - Additional Information**Gene ID** 1361**Other Names**

Carboxypeptidase B2, Carboxypeptidase U, CPU, Plasma carboxypeptidase B, pCPB, Thrombin-activable fibrinolysis inhibitor, TAFI, CPB2

Target/Specificity

This CPB2 antibody is generated from rabbits immunized with a KLH conjugated synthetic peptide between 119-148 amino acids from the Central region of human CPB2.

Dilution

WB~~1:1000

E~~Use at an assay dependent concentration.

Format

Purified polyclonal antibody supplied in PBS with 0.09% (W/V) sodium azide. This antibody is prepared by Saturated Ammonium Sulfate (SAS) precipitation followed by dialysis against PBS.

Storage

Maintain refrigerated at 2-8°C for up to 2 weeks. For long term storage store at -20°C in small aliquots to prevent freeze-thaw cycles.

Precautions

CPB2 Antibody (Center E134) is for research use only and not for use in diagnostic or therapeutic procedures.

CPB2 Antibody (Center E134) - Protein Information**Name** CPB2**Function** Cleaves C-terminal arginine or lysine residues from biologically active peptides such as

kinins or anaphylatoxins in the circulation thereby regulating their activities. Down-regulates fibrinolysis by removing C-terminal lysine residues from fibrin that has already been partially degraded by plasmin.

Cellular Location

Secreted.

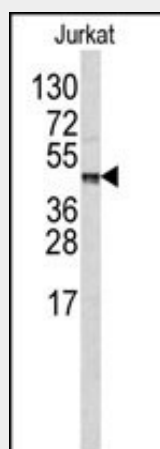
Tissue Location

Plasma; synthesized in the liver.

CPB2 Antibody (Center E134) - Protocols

Provided below are standard protocols that you may find useful for product applications.

- [Western Blot](#)
- [Blocking Peptides](#)
- [Dot Blot](#)
- [Immunohistochemistry](#)
- [Immunofluorescence](#)
- [Immunoprecipitation](#)
- [Flow Cytometry](#)
- [Cell Culture](#)

CPB2 Antibody (Center E134) - Images

Western blot analysis of CPB2 antibody (Center E134) (Cat.# AP6541c) in Jurkat cell line lysates (35ug/lane). CPB2 (arrow) was detected using the purified Pab.

CPB2 Antibody (Center E134) - Background

Carboxypeptidases are enzymes that hydrolyze C-terminal peptide bonds. The carboxypeptidase family includes metallo-, serine, and cysteine carboxypeptidases. According to their substrate specificity, these enzymes are referred to as carboxypeptidase A (cleaving aliphatic residues) or carboxypeptidase B (cleaving basic amino residues). CPB2 is activated by trypsin and acts on carboxypeptidase B substrates. After thrombin activation, the mature protein downregulates fibrinolysis. Polymorphisms have been described for its gene and its promoter region.

CPB2 Antibody (Center E134) - References

Valnickova,Z., J. Biol. Chem. 271 (22), 12937-12943 (1996)