

HFE Antibody (Center)
Purified Rabbit Polyclonal Antibody (Pab)
Catalog # AP6544c**Specification**

HFE Antibody (Center) - Product Information

Application	IHC-P, WB,E
Primary Accession	O30201
Other Accession	O35799
Reactivity	Human
Predicted	Rat
Host	Rabbit
Clonality	Polyclonal
Isotype	Rabbit IgG
Calculated MW	40108
Antigen Region	122-148

HFE Antibody (Center) - Additional Information**Gene ID** 3077**Other Names**

Hereditary hemochromatosis protein, HLA-H, HFE, HLAH

Target/Specificity

This HFE antibody is generated from rabbits immunized with a KLH conjugated synthetic peptide between 122-148 amino acids from the Central region of human HFE.

Dilution

IHC-P~~1:50~100

WB~~1:1000

E~~Use at an assay dependent concentration.

Format

Purified polyclonal antibody supplied in PBS with 0.09% (W/V) sodium azide. This antibody is prepared by Saturated Ammonium Sulfate (SAS) precipitation followed by dialysis against PBS.

Storage

Maintain refrigerated at 2-8°C for up to 2 weeks. For long term storage store at -20°C in small aliquots to prevent freeze-thaw cycles.

Precautions

HFE Antibody (Center) is for research use only and not for use in diagnostic or therapeutic procedures.

HFE Antibody (Center) - Protein Information**Name** HFE

Synonyms HLAH

Function Binds to transferrin receptor (TFR) and reduces its affinity for iron-loaded transferrin.

Cellular Location

Cell membrane; Single-pass type I membrane protein

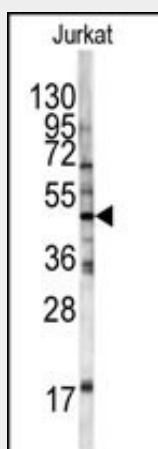
Tissue Location

Expressed in all tissues tested except brain.

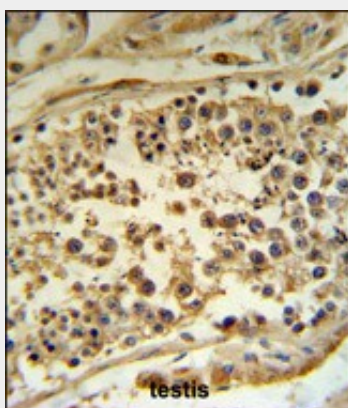
HFE Antibody (Center) - Protocols

Provided below are standard protocols that you may find useful for product applications.

- [Western Blot](#)
- [Blocking Peptides](#)
- [Dot Blot](#)
- [Immunohistochemistry](#)
- [Immunofluorescence](#)
- [Immunoprecipitation](#)
- [Flow Cytometry](#)
- [Cell Culture](#)

HFE Antibody (Center) - Images

Western blot analysis of HFE antibody (Center) (Cat.# AP6544c) in Jurkat cell line lysates (35ug/lane). HFE (arrow) was detected using the purified Pab.



HFE Antibody (Center) (Cat.# AP6544c) IHC analysis in formalin fixed and paraffin embedded human testis tissue followed by peroxidase conjugation of the secondary antibody and DAB staining. This data demonstrates the use of the HFE Antibody (Center) for immunohistochemistry. Clinical relevance has not been evaluated.

HFE Antibody (Center) - Background

HFE is a membrane protein that is similar to MHC class I-type proteins and associates with beta2-microglobulin (beta2M). It is thought that this protein functions to regulate iron absorption by regulating the interaction of the transferrin receptor with transferrin. The iron storage disorder, hereditary haemochromatosis, is a recessive genetic disorder that results from defects in its gene.

HFE Antibody (Center) - References

Valenti,L., Clin J Am Soc Nephrol 4 (8), 1331-1337 (2009)
Won,J.E., Intervirology 52 (5), 239-246 (2009)