

IGJ Antibody (N-term)
Purified Rabbit Polyclonal Antibody (Pab)
Catalog # AP6548a**Specification**

IGJ Antibody (N-term) - Product Information

Application	WB, FC, IHC-P,E
Primary Accession	P01591
Reactivity	Human
Host	Rabbit
Clonality	Polyclonal
Isotype	Rabbit IgG
Antigen Region	32-61

IGJ Antibody (N-term) - Additional Information**Gene ID** 3512**Other Names**

Immunoglobulin J chain, IGJ, IGCJ

Target/Specificity

This IGJ antibody is generated from rabbits immunized with a KLH conjugated synthetic peptide between 32-61 amino acids from the N-terminal region of human IGJ.

Dilution

WB~~1:1000

FC~~1:10~50

IHC-P~~1:50~100

E~~Use at an assay dependent concentration.

Format

Purified polyclonal antibody supplied in PBS with 0.09% (W/V) sodium azide. This antibody is prepared by Saturated Ammonium Sulfate (SAS) precipitation followed by dialysis against PBS.

Storage

Maintain refrigerated at 2-8°C for up to 2 weeks. For long term storage store at -20°C in small aliquots to prevent freeze-thaw cycles.

Precautions

IGJ Antibody (N-term) is for research use only and not for use in diagnostic or therapeutic procedures.

IGJ Antibody (N-term) - Protein Information**Name** JCHAIN ([HGNC:5713](#))**Synonyms** IGCJ, IGJ

Function Serves to link two monomer units of either IgM or IgA. In the case of IgM, the J chain-jointed dimer is a nucleating unit for the IgM pentamer, and in the case of IgA it induces dimers and/or larger polymers. It also helps to bind these immunoglobulins to secretory component.

Cellular Location

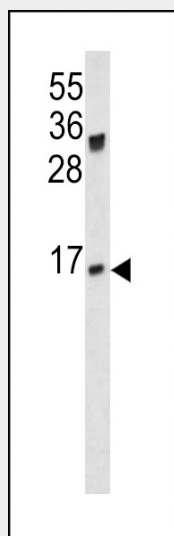
Secreted {ECO:0000250|UniProtKB:P01592}.

IGJ Antibody (N-term) - Protocols

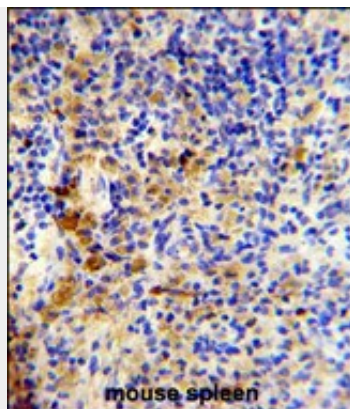
Provided below are standard protocols that you may find useful for product applications.

- [Western Blot](#)
- [Blocking Peptides](#)
- [Dot Blot](#)
- [Immunohistochemistry](#)
- [Immunofluorescence](#)
- [Immunoprecipitation](#)
- [Flow Cytometry](#)
- [Cell Culture](#)

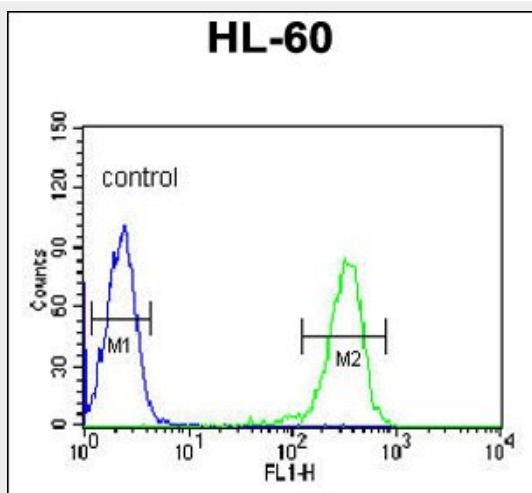
IGJ Antibody (N-term) - Images



Western blot analysis of IGJ antibody (N-term) (Cat.# AP6548a) in mouse spleen lysates (35ug/lane). IGJ (arrow) was detected using the purified Pab.



Formalin-fixed and paraffin-embedded mouse spleen reacted with IGJ Antibody (N-term), which was peroxidase-conjugated to the secondary antibody, followed by DAB staining. This data demonstrates the use of this antibody for immunohistochemistry; clinical relevance has not been evaluated.



IGJ Antibody (N-term) (Cat. #AP6548a) flow cytometric analysis of HL-60 cells (right histogram) compared to a negative control cell (left histogram). FITC-conjugated goat-anti-rabbit secondary antibodies were used for the analysis.

IGJ Antibody (N-term) - Background

IGJ serves to link two monomer units of either IgM or IgA. In the case of IgM, the J chain-joined dimer is a nucleating unit for the IgM pentamer, and in the case of IgA it induces larger polymers. It also help to bind these immunoglobulins to secretory component.

IGJ Antibody (N-term) - References

Ramachandran, P., J. Proteome Res. 5 (6), 1493-1503 (2006)
Liu, T., J. Proteome Res. 4 (6), 2070-2080 (2005)