

CASA Antibody (Center)
Purified Rabbit Polyclonal Antibody (Pab)
Catalog # AP6551c**Specification**

CASA Antibody (Center) - Product Information

| | |
|-------------------|------------------------|
| Application | FC, WB, IHC-P,E |
| Primary Accession | P47710 |
| Reactivity | Human |
| Host | Rabbit |
| Clonality | Polyclonal |
| Isotype | Rabbit IgG |
| Calculated MW | 21671 |
| Antigen Region | 42-70 |

CASA Antibody (Center) - Additional Information**Gene ID** 1446**Other Names**

Alpha-S1-casein, Casoxin-D, CSN1S1, CASA, CSN1

Target/Specificity

This CASA antibody is generated from rabbits immunized with a KLH conjugated synthetic peptide between 42-70 amino acids from the Central region of human CASA.

Dilution

FC~~1:10~50

WB~~1:1000

IHC-P~~1:50~100

E~~Use at an assay dependent concentration.

Format

Purified polyclonal antibody supplied in PBS with 0.09% (W/V) sodium azide. This antibody is prepared by Saturated Ammonium Sulfate (SAS) precipitation followed by dialysis against PBS.

Storage

Maintain refrigerated at 2-8°C for up to 2 weeks. For long term storage store at -20°C in small aliquots to prevent freeze-thaw cycles.

Precautions

CASA Antibody (Center) is for research use only and not for use in diagnostic or therapeutic procedures.

CASA Antibody (Center) - Protein Information**Name** CSN1S1

Synonyms CASA, CSN1

Function Important role in the capacity of milk to transport calcium phosphate.

Cellular Location
Secreted.

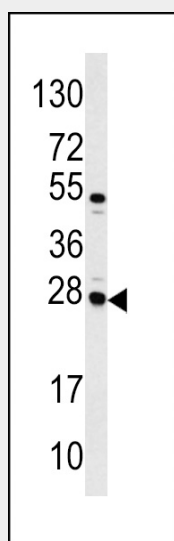
Tissue Location
Mammary gland specific. Secreted in milk.

CASA Antibody (Center) - Protocols

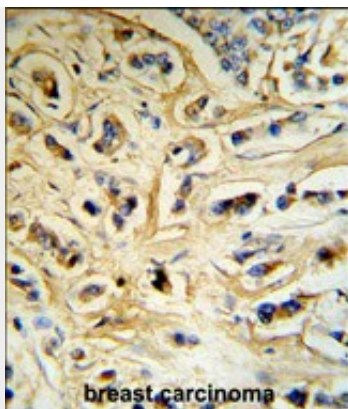
Provided below are standard protocols that you may find useful for product applications.

- [Western Blot](#)
- [Blocking Peptides](#)
- [Dot Blot](#)
- [Immunohistochemistry](#)
- [Immunofluorescence](#)
- [Immunoprecipitation](#)
- [Flow Cytometry](#)
- [Cell Culture](#)

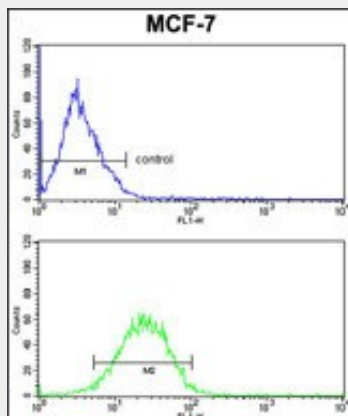
CASA Antibody (Center) - Images



Western blot analysis of CASA antibody (Center) (Cat.# AP6551c) in Jurkat cell line lysates (35ug/lane). CASA (arrow) was detected using the purified Pab.



CASA Antibody (Center) (RB18742) IHC analysis in formalin fixed and paraffin embedded human breast carcinoma tissue followed by peroxidase conjugation of the secondary antibody and DAB staining. This data demonstrates the use of the CASA Antibody (Center) for immunohistochemistry. Clinical relevance has not been evaluated.



CASA Antibody (Center)(Cat.#AP6551c) FC analysis of MCF-7 cells (bottom histogram) compared to a negative control cell (top histogram). FITC-conjugated goat-anti-rabbit secondary antibodies were used for the analysis.

CASA Antibody (Center) - Background

CASA play an important role in the capacity of milk to transport calcium phosphate. Casoxin D acts as opioid antagonist and has vasorelaxing activity mediated by bradykinin B1 receptors.

CASA Antibody (Center) - References

Xu,K., Prostate Cancer Prostatic Dis. 9 (3), 293-297 (2006)