

**SPP1 Antibody (C-term)**  
**Purified Rabbit Polyclonal Antibody (Pab)**  
**Catalog # AP6555b****Specification**

---

**SPP1 Antibody (C-term) - Product Information**

Application	IHC-P, FC, WB,E
Primary Accession	<a href="#">P10451</a>
Reactivity	Human
Host	Rabbit
Clonality	Polyclonal
Isotype	Rabbit IgG
Antigen Region	273-301

**SPP1 Antibody (C-term) - Additional Information****Gene ID** 6696**Other Names**

Osteopontin, Bone sialoprotein 1, Nephropontin, Secreted phosphoprotein 1, SPP-1, Urinary stone protein, Uropontin, SPP1, BNSP, OPN

**Target/Specificity**

This SPP1 antibody is generated from rabbits immunized with a KLH conjugated synthetic peptide between 273-301 amino acids from the C-terminal region of human SPP1.

**Dilution**

IHC-P~~1:50~100

FC~~1:10~50

WB~~1:2000

E~~Use at an assay dependent concentration.

**Format**

Purified polyclonal antibody supplied in PBS with 0.09% (W/V) sodium azide. This antibody is prepared by Saturated Ammonium Sulfate (SAS) precipitation followed by dialysis against PBS.

**Storage**

Maintain refrigerated at 2-8°C for up to 2 weeks. For long term storage store at -20°C in small aliquots to prevent freeze-thaw cycles.

**Precautions**

SPP1 Antibody (C-term) is for research use only and not for use in diagnostic or therapeutic procedures.

**SPP1 Antibody (C-term) - Protein Information****Name** SPP1

**Synonyms** BNSP, OPN

**Function** Major non-collagenous bone protein that binds tightly to hydroxyapatite. Appears to form an integral part of the mineralized matrix. Probably important to cell-matrix interaction.

**Cellular Location**

Secreted

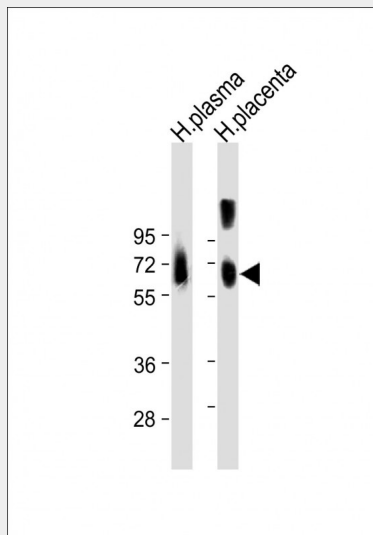
**Tissue Location**

Detected in cerebrospinal fluid and urine (at protein level) (PubMed:25326458, PubMed:36213313, PubMed:37453717) Bone. Found in plasma.

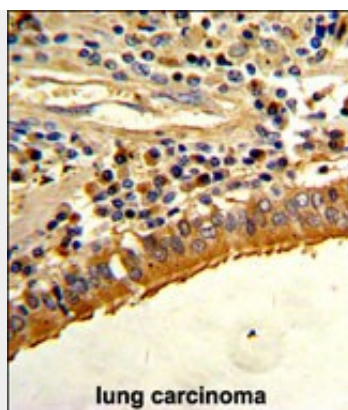
**SPP1 Antibody (C-term) - Protocols**

Provided below are standard protocols that you may find useful for product applications.

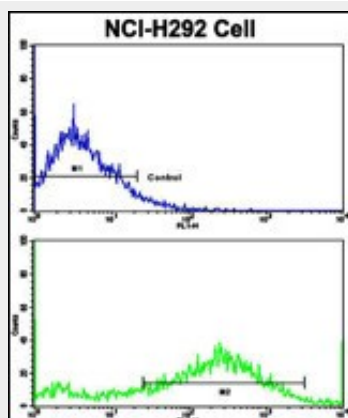
- [Western Blot](#)
- [Blocking Peptides](#)
- [Dot Blot](#)
- [Immunohistochemistry](#)
- [Immunofluorescence](#)
- [Immunoprecipitation](#)
- [Flow Cytometry](#)
- [Cell Culture](#)

**SPP1 Antibody (C-term) - Images**

All lanes : Anti-SPP1 Antibody (C-term) at 1:2000 dilution Lane 1: Human plasma lysate Lane 2: Human placenta lysate Lysates/proteins at 20 µg per lane. Secondary Goat Anti-Rabbit IgG, (H+L), Peroxidase conjugated at 1/10000 dilution. Predicted band size : 35 kDa Blocking/Dilution buffer: 5% NFD/MTBST.



Formalin-fixed and paraffin-embedded human lung carcinoma with SPP1 Antibody (C-term), which was peroxidase-conjugated to the secondary antibody, followed by DAB staining. This data demonstrates the use of this antibody for immunohistochemistry; clinical relevance has not been evaluated.



Flow cytometric analysis of NCI-H292 cells using SPP1 Antibody (C-term)(bottom histogram) compared to a negative control cell (top histogram). FITC-conjugated goat-anti-rabbit secondary antibodies were used for the analysis.

### **SPP1 Antibody (C-term) - Background**

SPP1 binds tightly to hydroxyapatite. The protein appears to form an integral part of the mineralized matrix and probably important to cell-matrix interaction. It acts as a cytokine involved in enhancing production of interferon-gamma and interleukin-12 and reducing production of interleukin-10 and is essential in the pathway that leads to type I immunity.

### **SPP1 Antibody (C-term) - References**

- Macri,A., Tumori 95 (1), 48-52 (2009)  
Agnihotri,R., J. Biol. Chem. 276 (30), 28261-28267 (2001)