

**PSA Antibody (C-term)**  
**Purified Rabbit Polyclonal Antibody (Pab)**  
**Catalog # AP6563b**

**Specification**

---

**PSA Antibody (C-term) - Product Information**

Application	WB, IHC-P,E
Primary Accession	<a href="#">P55786</a>
Reactivity	Human
Host	Rabbit
Clonality	Polyclonal
Isotype	Rabbit IgG
Antigen Region	709-737

**PSA Antibody (C-term) - Additional Information**

**Gene ID** 9520

**Other Names**

Puromycin-sensitive aminopeptidase, PSA, Cytosol alanyl aminopeptidase, AAP-S, NPEPPS, PSA

**Target/Specificity**

This PSA antibody is generated from rabbits immunized with a KLH conjugated synthetic peptide between 709-737 amino acids from the C-terminal region of human PSA.

**Dilution**

WB~~1:1000

IHC-P~~1:50~100

E~~Use at an assay dependent concentration.

**Format**

Purified polyclonal antibody supplied in PBS with 0.09% (W/V) sodium azide. This antibody is prepared by Saturated Ammonium Sulfate (SAS) precipitation followed by dialysis against PBS.

**Storage**

Maintain refrigerated at 2-8°C for up to 2 weeks. For long term storage store at -20°C in small aliquots to prevent freeze-thaw cycles.

**Precautions**

PSA Antibody (C-term) is for research use only and not for use in diagnostic or therapeutic procedures.

**PSA Antibody (C-term) - Protein Information**

**Name** NPEPPS

**Synonyms** PSA

**Function** Aminopeptidase with broad substrate specificity for several peptides. Involved in proteolytic events essential for cell growth and viability. May act as regulator of neuropeptide activity. Plays a role in the antigen-processing pathway for MHC class I molecules. Involved in the N-terminal trimming of cytotoxic T-cell epitope precursors. Digests the poly-Q peptides found in many cellular proteins. Digests tau from normal brain more efficiently than tau from Alzheimer disease brain.

**Cellular Location**

Cytoplasm, cytosol. Nucleus

**Tissue Location**

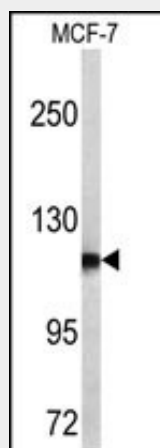
Detected in liver, epithelium of renal tubules, epithelium of small and large intestine, gastric epithelial cells, and alveoli of the lung (at protein level).

**PSA Antibody (C-term) - Protocols**

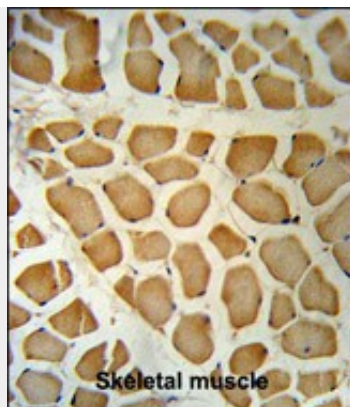
Provided below are standard protocols that you may find useful for product applications.

- [Western Blot](#)
- [Blocking Peptides](#)
- [Dot Blot](#)
- [Immunohistochemistry](#)
- [Immunofluorescence](#)
- [Immunoprecipitation](#)
- [Flow Cytometry](#)
- [Cell Culture](#)

**PSA Antibody (C-term) - Images**



Western blot analysis of PSA antibody (C-term) (Cat. #AP6563b) in MCF-7 cell line lysates (35ug/lane). PSA (arrow) was detected using the purified Pab.



PSA Antibody (C-term) (Cat. #AP6563b) IHC analysis in formalin fixed and paraffin embedded human Skeletal muscle followed by peroxidase conjugation of the secondary antibody and DAB staining. This data demonstrates the use of the PSA Antibody (C-term) for immunohistochemistry. Clinical relevance has not been evaluated.

#### **PSA Antibody (C-term) - Background**

PSA is the puromycin-sensitive aminopeptidase, a zinc metallopeptidase which hydrolyzes amino acids from the N-terminus of its substrate. The protein has been localized to both the cytoplasm and to cellular membranes. This enzyme degrades enkaphalins in the brain, and studies in mouse suggest that it is involved in proteolytic events regulating the cell cycle.

#### **PSA Antibody (C-term) - References**

Thompson,M.W., Peptides 24 (9), 1359-1365 (2003)