

DONSON Antibody (N-term)
Purified Rabbit Polyclonal Antibody (Pab)
Catalog # AP6567A**Specification**

DONSON Antibody (N-term) - Product Information

Application	WB,E
Primary Accession	Q9NYP3
Reactivity	Human
Host	Rabbit
Clonality	Polyclonal
Isotype	Rabbit IgG
Calculated MW	62747
Antigen Region	95-126

DONSON Antibody (N-term) - Additional Information**Gene ID** 29980**Other Names**

Protein downstream neighbor of Son, B17, DONSON, C21orf60

Target/Specificity

This DONSON antibody is generated from rabbits immunized with a KLH conjugated synthetic peptide between 95-126 amino acids from the N-terminal region of human DONSON.

Dilution

WB~~1:1000

E~~Use at an assay dependent concentration.

Format

Purified polyclonal antibody supplied in PBS with 0.09% (W/V) sodium azide. This antibody is prepared by Saturated Ammonium Sulfate (SAS) precipitation followed by dialysis against PBS.

Storage

Maintain refrigerated at 2-8°C for up to 2 weeks. For long term storage store at -20°C in small aliquots to prevent freeze-thaw cycles.

Precautions

DONSON Antibody (N-term) is for research use only and not for use in diagnostic or therapeutic procedures.

DONSON Antibody (N-term) - Protein Information**Name** DONSON**Synonyms** C21orf60

Function Replisome component that maintains genome stability by protecting stalled or damaged replication forks. After the induction of replication stress, required for the stabilization of stalled replication forks, the efficient activation of the intra-S-phase and G2/M cell-cycle checkpoints and the maintenance of genome stability.

Cellular Location

Nucleus. Note=Localizes at DNA replication sites.

Tissue Location

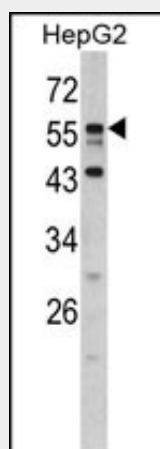
Expressed in the brain, with higher levels in prenatal compared to adult brain.

DONSON Antibody (N-term) - Protocols

Provided below are standard protocols that you may find useful for product applications.

- [Western Blot](#)
- [Blocking Peptides](#)
- [Dot Blot](#)
- [Immunohistochemistry](#)
- [Immunofluorescence](#)
- [Immunoprecipitation](#)
- [Flow Cytometry](#)
- [Cell Culture](#)

DONSON Antibody (N-term) - Images



Western blot analysis of DONSON antibody (N-term) (Cat. #AP6567a) in HepG2 cell line lysates (35ug/lane). DONSON (arrow) was detected using the purified Pab.

DONSON Antibody (N-term) - Background

DONSON is essential for DNA amplification in the ovary and required for cell proliferation during development.

DONSON Antibody (N-term) - References

Wynn,S.L., Genomics 68 (1), 57-62 (2000)